

(KACIR2.KACIR) 17341

# KACIR TWO DEPARTURE (RNAV)

AL-9072 (FAA)

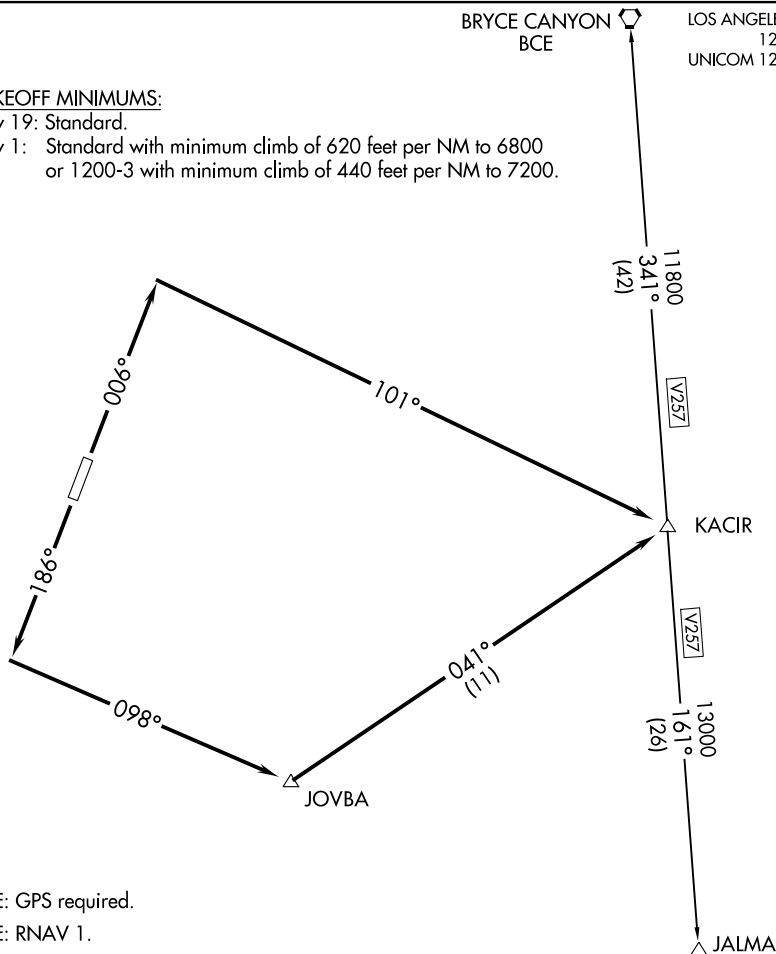
KANAB MUNI (KNB)

KANAB, UTAH

### TAKEOFF MINIMUMS:

Rwy 19: Standard.

Rwy 1: Standard with minimum climb of 620 feet per NM to 6800 or 1200-3 with minimum climb of 440 feet per NM to 7200.



NOTE: GPS required.

NOTE: RNAV 1.

NOTE: Rwy 1, do not exceed 200 KIAS until established on track to KACIR.

NOTE: Rwy 19, do not exceed 200 KIAS until established on track to JOVBA.

NOTE: Chart not to scale.



## DEPARTURE ROUTE DESCRIPTION

TAKEOFF RWY 1: Climb heading 006° to intercept course 101° to KACIR, thence. . . .

TAKEOFF RWY 19: Climb heading 186° to intercept course 098° to JOVBA, then on track 041° to KACIR, thence. . . .

. . . . (transition).

BRYCE CANYON TRANSITION (KACIR2.BCE)

JALMA TRANSITION (KACIR2.JALMA)

# KACIR TWO DEPARTURE (RNAV)

(KACIR2.KACIR) 15DEC11

KANAB, UTAH

KANAB MUNI (KNB)

SW-4, 08 AUG 2024 to 05 SEP 2024

SW-4, 08 AUG 2024 to 05 SEP 2024