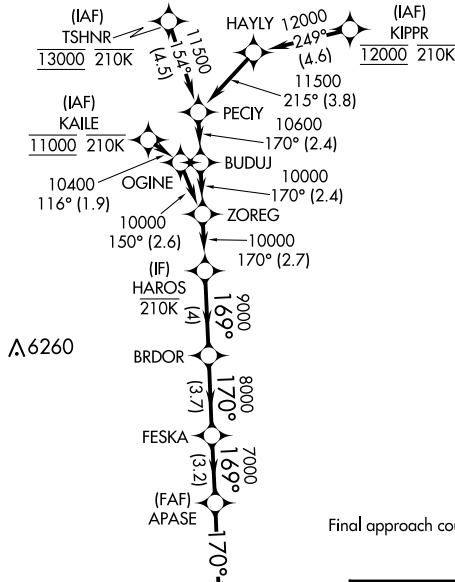
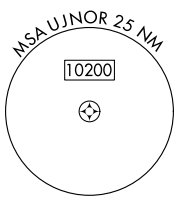


WAAS CH 53546 W16B	APP CRS 170°	Rwy Idg 16000 TDZE 5326 Apt Elev 5434
--	------------------------	--

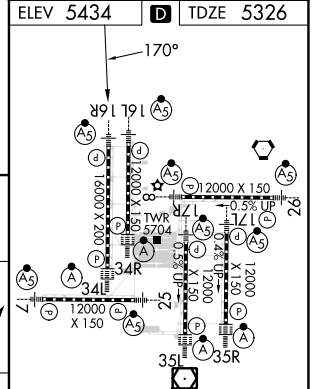
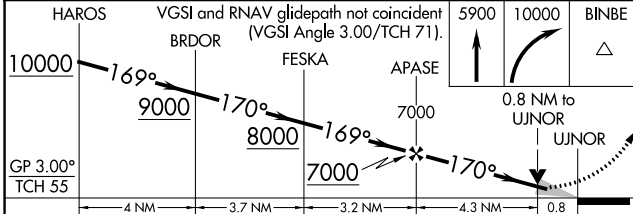
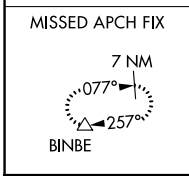
RNAV (GPS) Y RWY 16R

DENVER INTL (DEN)

RNP APCH - GPS.		MALSR		MISSED APPROACH: Climb to 5900, then climbing right turn to 10000 direct BINBE and hold, continue climb-in-hold to 10000.	
<p>▼ LNAV procedure NA during simultaneous operations. For uncompensated Baro-VNAV systems, LNAV/VNAV NA below -24°C or above 54°C. Use of FD or AP required during simultaneous operations. For inop ALS, increase LNAV/VNAV all Cats visibility to RVR 4000. Simultaneous approach authorized.</p>					
D-ATIS ARR 125.6 379.9 DEP 134.025	DENVER APP CON 119.3 307.3 (NORTH) 120.35 379.3 (SOUTH)	DENVER TOWER 135.3 351.95	GND CON 121.35 379.175	CLNC DEL 118.75	CPDLC



Final approach course offset 3.00°.



CATEGORY	A	B	C	D
LPV DA	5576/24		250 (200-½)	
LNAV/VNAV DA	5582/24		256 (200-½)	
LNAV MDA	5660/24	334 (300-½)	5660/26	334 (300-½)

ELEV 5434	TDZE 5326
HIRI all Rwys	
TDZ/CL Rwys 7, 16L, 16R, 17R, 26, 34L, 34R, 35L, 35R	

SW-1, 08 AUG 2024 to 05 SEP 2024

SW-1, 08 AUG 2024 to 05 SEP 2024