

WAAS CH 65902 W30A	APP CRS 300°	Rwy Idg TDZE Apt Elev	4500 55 79
--	------------------------	-----------------------------	---------------------------------------

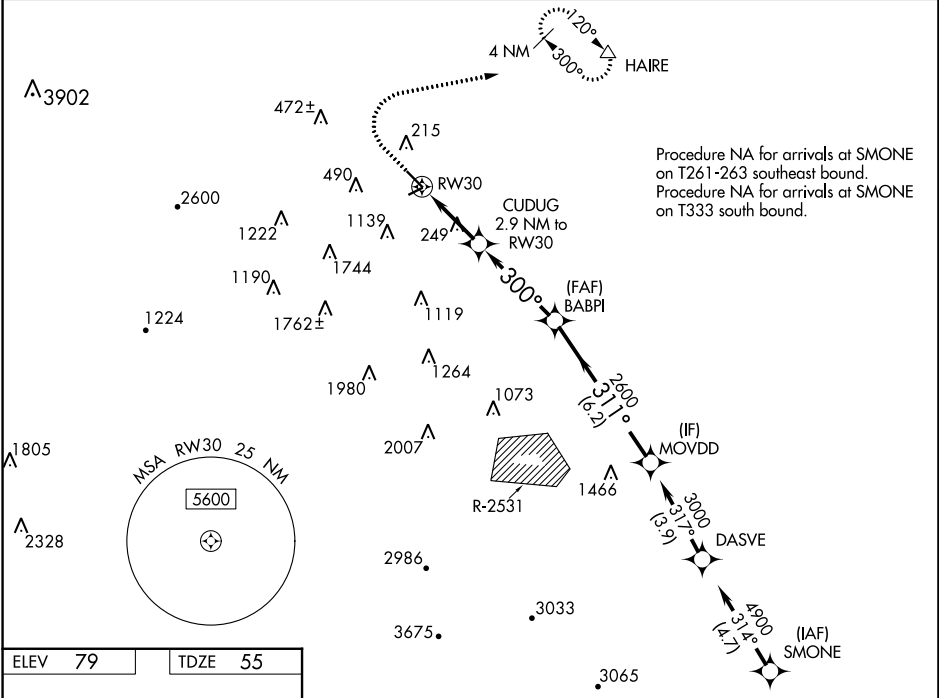
RNAV (GPS) RWY 30

BYRON (C83)

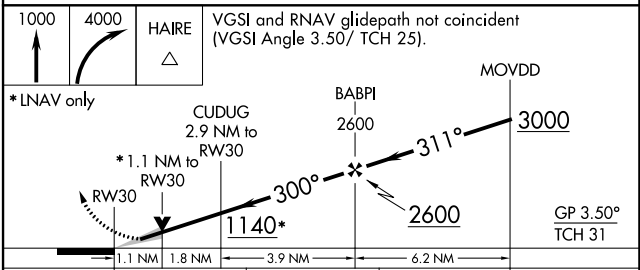
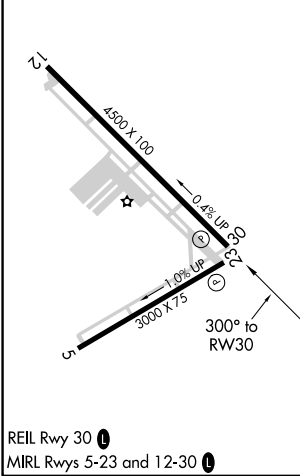
RNP APCH.
 ▼ For uncompensated Baro-VNAV systems, LNAV/VNAV NA below -15°C (5°F) or above 15°C (59°F). Circling NA southwest of Rwy 12-30.
 ▲

MISSED APPROACH: Climb to 1000, then climbing right turn 4000 direct HAIRE and hold, continue climb-in-hold 4000.

AWOS-3 123.775	NORCAL APP CON 123.85 278.3	UNICOM 123.050 (CTAF)
--------------------------	---------------------------------------	---------------------------------



ELEV 79	TDZE 55
---------	---------



CATEGORY	A	B	C	D
LPV DA		325-7/8	270 (300-7/8)	
LNAV/VNAV DA		404-1 1/8	349 (400-1 1/8)	
LNAV MDA	500-1	445 (500-1)	500-1 3/8	445 (500-1 3/8)
CIRCLING	600-1	521 (600-1)	680-1 3/4 601 (700-1 3/4)	820-2 1/2 741 (800-2 1/2)

RNAV (GPS) RWY 30

SW-2, 08 AUG 2024 to 05 SEP 2024

SW-2, 08 AUG 2024 to 05 SEP 2024