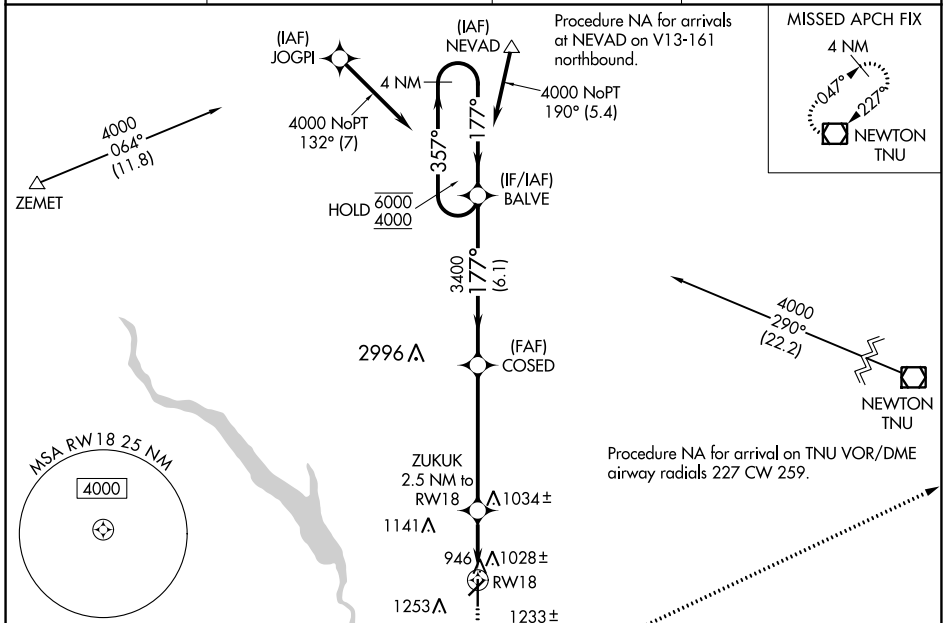


WAAS CH 82720 W18A	APP CRS 177°	Rwy Idg 5500 TDZE 903 Apt Elev 910
---------------------------------	------------------------	---

RNAV (GPS) RWY 18

ANKENY RGNL (IKV)

RNP APCH - GPS.		MISSED APPROACH: Climb to 1600 then climbing left turn to 4000 direct TNU VOR/DME and hold.	
<p>⚠ Rwy 18 helicopter visibility reduction below 3/4 SM NA. For uncompensated Baro-VNAV systems, LNAV/VNAV NA below -21°C or above 54°C.</p>			
AWOS-3 119.175	DES MOINES APP CON 123.9 307.15	CLNC DEL 126.65	UNICOM 122.9 (CTAF) ①

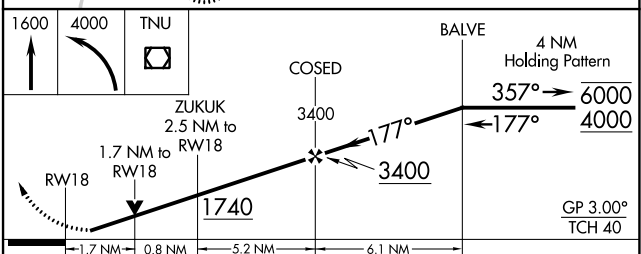


NC-3, 08 AUG 2024 to 05 SEP 2024

NC-3, 08 AUG 2024 to 05 SEP 2024

ELEV 910 **D** TDZE 903

MIRL Rwy 4-22 and 18-36 ①
REIL Rwy 4, 18 and 36 ①
REIL Rwy 22



CATEGORY	A	B	C	D
LPV DA		1153-3/4	250 (300-3/4)	
LNAV/VNAV DA		1354-1 3/8	451 (500-1 1/8)	
LNAV MDA	1480-1	577 (600-1)	1480-1 5/8	577 (600-1 5/8)
C CIRCLING	1560-1	650 (700-1)	1560-1 3/4	1760-2 3/4 850 (900-2 3/4)