

WAAS CH 53538 W33A	APP CRS 328°	Rwy ldg TDZE Apt Elev	3999 1067 1067
--	------------------------	-----------------------------	---

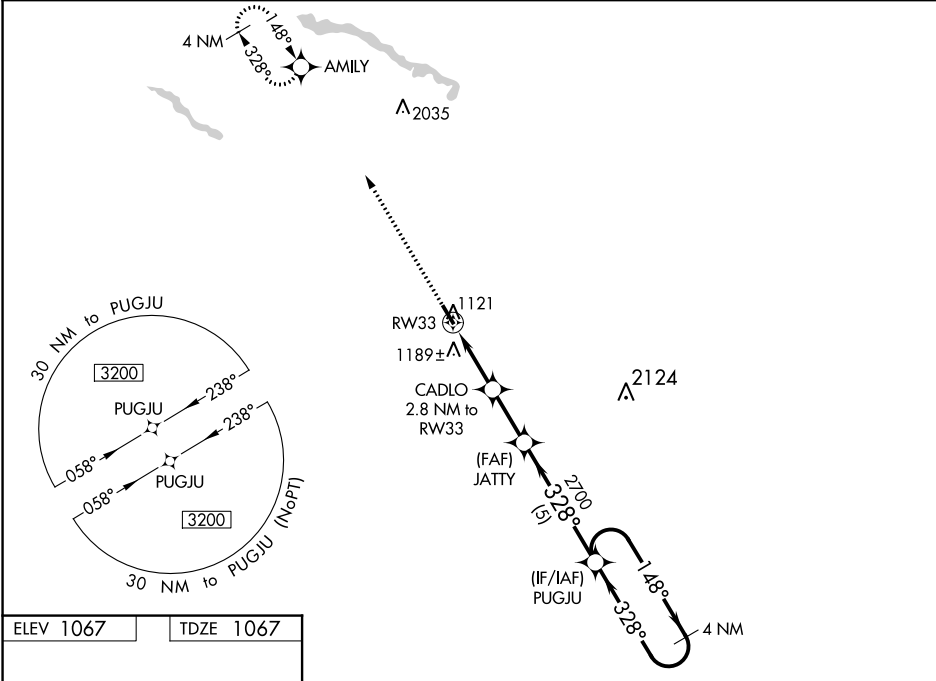
RNAV (GPS) RWY 33

ST JAMES MUNI (JYG)

⚠ For uncompensated Baro-VNAV systems, procedure NA below -17°C (2°F) or above 54°C (130°F). DME/DME RNP-0.3 NA. Helicopter visibility reduction below ¾ SM NA. Baro-VNAV and VDP NA when using New Ulm altimeter setting. When local altimeter setting not received, use New Ulm, MN altimeter setting and increase LPV DA to 1398 feet, LNAV/VNAV DA to 1549 feet, and all MDA 60 feet.

MISSED APPROACH: Climb to 3200 direct AMILY and hold.

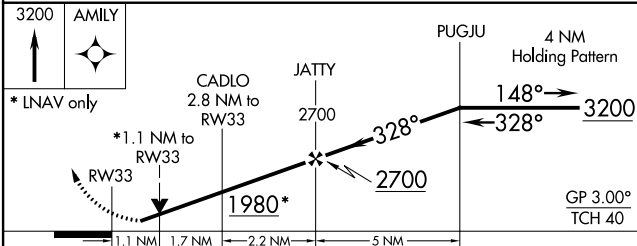
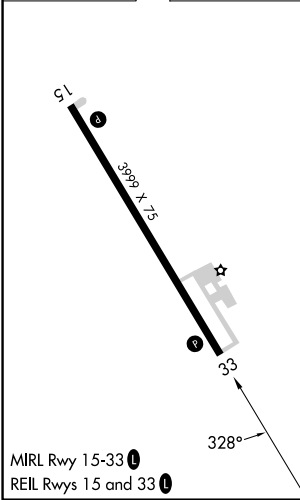
AWOS-3PT 123.7	MINNEAPOLIS CENTER 127.75 257.7	GCO 121.725	CTAF 122.9 Ⓛ
--------------------------	---	-----------------------	-------------------------------



NC-1, 08 AUG 2024 to 05 SEP 2024

NC-1, 08 AUG 2024 to 05 SEP 2024

ELEV 1067	TDZE 1067
-----------	-----------



CATEGORY	A	B	C	D
LPV DA	1343-1	276 (300-1)		NA
LNAV/VNAV DA	1494-1½	427 (500-1½)		NA
LNAV MDA	1440-1	373 (400-1)		NA
C CIRCLING	1500-1 433 (500-1)	1520-1 453 (500-1)		NA