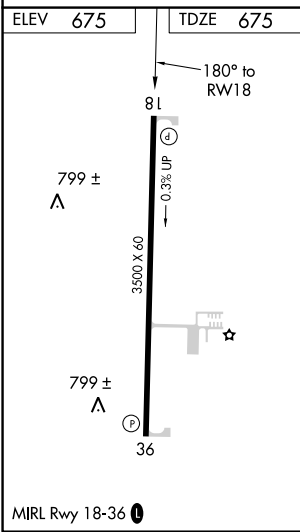
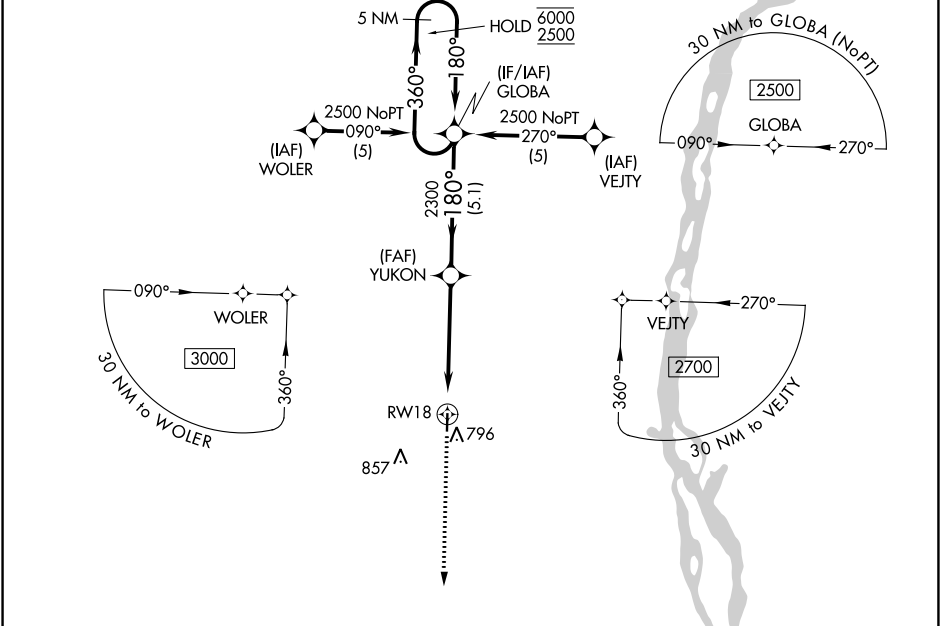


WAAS CH 50401 W18A	APP CRS 180°	Rwy Idg TDZE Apt Elev	3500 675 675
--	------------------------	-----------------------------	---

RNAV (GPS) RWY 18

LEWIS COUNTY RGNL (6M6)

RNP APCH.		MISSED APPROACH: Climb to 2300 direct GRITE and hold.	
UN ASOS 121.425	KANSAS CITY CENTER 126.225 317.775	UNICOM 122.7 (CTAF) 0	



ELEV 675	TDZE 675	1643 Δ		
		4 NM Holding Pattern		
		GP 3.00° TCH 40		
CATEGORY	A	B	C	D
LPV DA	1035-1 $\frac{1}{4}$	360 (400-1 $\frac{1}{4}$)	NA	
LNAV/VNAV DA	1082-1 $\frac{1}{2}$	407 (500-1 $\frac{1}{2}$)	NA	
LNAV MDA	1220-1	545 (600-1)	NA	

NC-3, 08 AUG 2024 to 05 SEP 2024

NC-3, 08 AUG 2024 to 05 SEP 2024