

LOC I-CPF 109.35	APP CRS 145°	Rwy Idg 5499 TDZE 1243 Apt Elev 1256
----------------------------	------------------------	-----------------------------------------------------------------

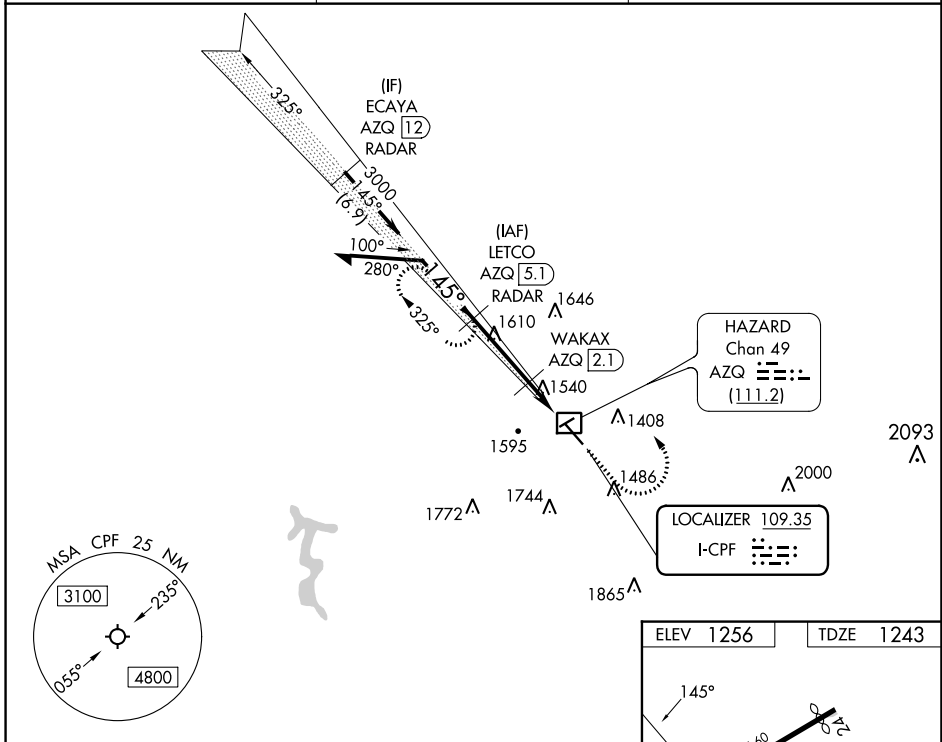
LOC RWY 14
WENDELL H FORD (CPF)

DME required. RADAR required for procedure entry.
RADAR required for missed approach.

⚠ Circling Rwy 24, 32 NA at night. Simultaneous reception of I-CPF and AZQ DME required. Rwy 14 helicopter visibility reduction below 3/4 SM NA.
DME from AZQ DME.

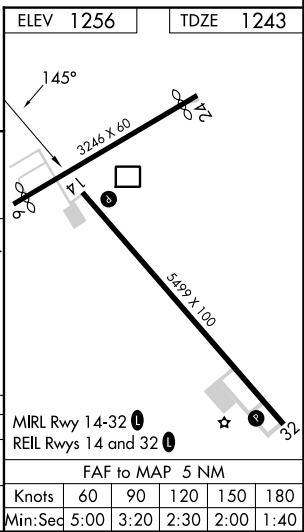
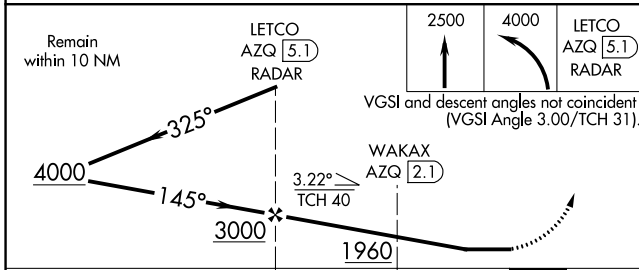
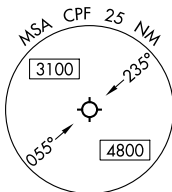
MISSED APPROACH: Climb to 2500 then climbing left turn to 4000 to LETCO/AZQ 5.1 DME/RADAR and hold, continue climb-in-hold to 4000.

AWOS-3 119.025	INDIANAPOLIS CENTER 126.575 257.85	UNICOM 122.7 (CTAF) 0
--------------------------	----------------------------------------------	---------------------------------



SE-1, 08 AUG 2024 to 05 SEP 2024

SE-1, 08 AUG 2024 to 05 SEP 2024



CATEGORY	A	B	C	D
S-LOC 14	1800-1	557 (600-1)	1800-1½	557 (600-1½)
CIRCLING	2000-1 744 (800-1)	2040-1 784 (800-1)	2060-2¼ 804 (900-2¼)	2140-3 884 (900-3)