

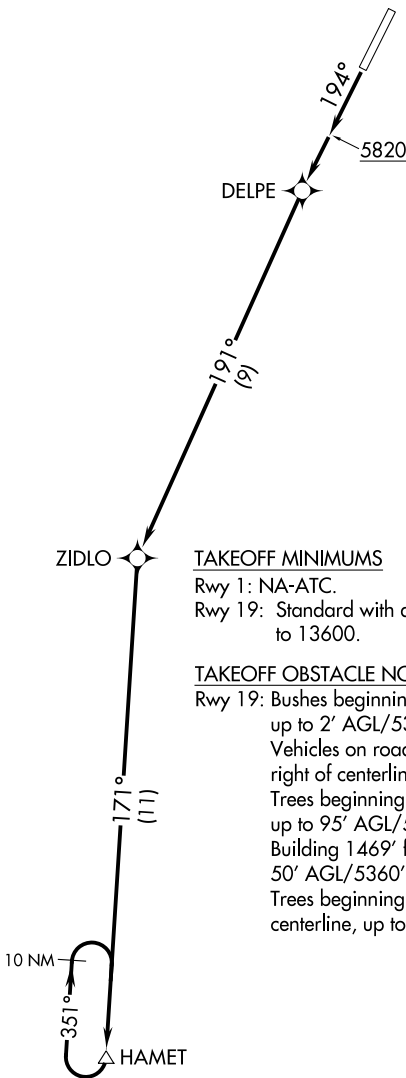
(HAMET3.HAMET) 19059

AL-9434 (FAA)

RICHFIELD MUNI (RIF)
RICHFIELD, UTAH

HAMET THREE DEPARTURE (OBSTACLE) (RNAV)

SALT LAKE CITY CENTER
125.575 379.275
UNICOM
122.8 (CTAF)
AWOS-3
133.375



NOTE: RNAV 1.
NOTE: GPS required.

TAKEOFF MINIMUMS

Rwy 1: NA-ATC.
Rwy 19: Standard with a minimum climb of 385' per NM to 13600.

TAKEOFF OBSTACLE NOTES

Rwy 19: Bushes beginning 74' from DER, 322' right of centerline, up to 2' AGL/5326' MSL.
Vehicles on road beginning 347' from DER, left and right of centerline, up to 15' AGL/5352' MSL.
Trees beginning 831' from DER, 695' left of centerline, up to 95' AGL/5414' MSL.
Building 1469' from DER, 660' right of centerline, 50' AGL/5360' MSL.
Trees beginning 1604' from DER, 475' right of centerline, up to 57' AGL/5397' MSL.

NOTE: Chart not to scale.

DEPARTURE ROUTE DESCRIPTION

TAKEOFF RUNWAY 19: Climb heading 194° to 5820, then direct DELPE, then on track 191° to ZIDLO, then on track 171° to HAMET. Thence. . . .

. . . .climb in holding pattern to 16000 before proceeding on course. Expect filed altitude 10 minutes after departure.

HAMET THREE DEPARTURE (OBSTACLE) (RNAV)
(HAMET3.HAMET) 20AUG15

RICHFIELD, UTAH
RICHFIELD MUNI (RIF)

SW-4, 08 AUG 2024 to 05 SEP 2024

SW-4, 08 AUG 2024 to 05 SEP 2024