

WAAS CH 77718 W30A	APP CRS 298°	Rwy Idg TDZE Apt Elev	4409 1192 1194
--	------------------------	-----------------------------	---

RNAV (GPS) RWY 30

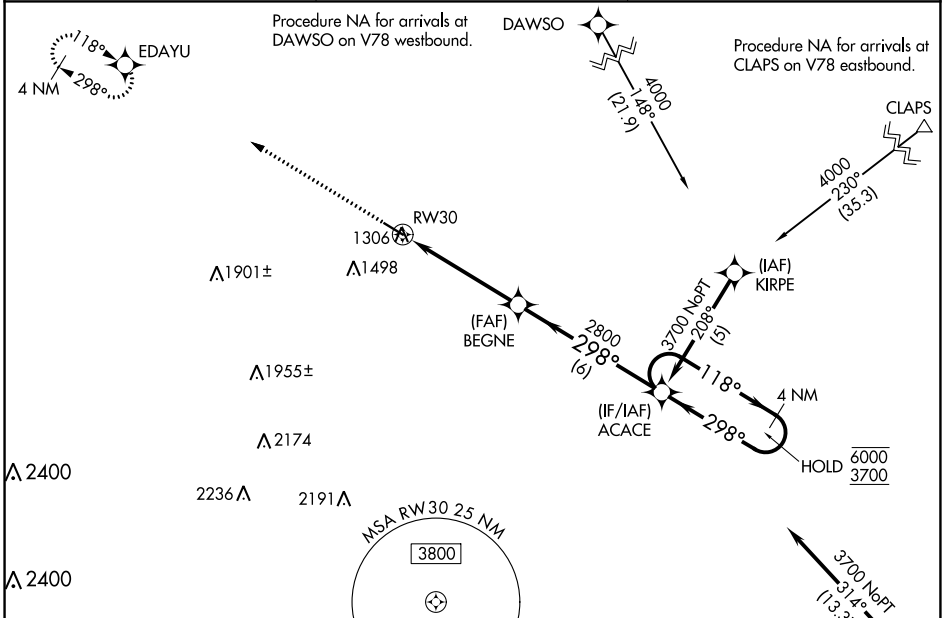
MYERS FLD (CNB)

RNP APCH - GPS.

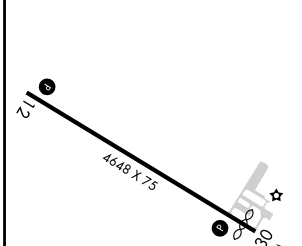
▽ Rwy 30 helicopter visibility reduction below 3/4 SM NA.
▲ For uncompensated Baro-VNAV systems, LNAV/VNAV NA below -17°C or above 54°C.

MISSED APPROACH: Climb to 3700 direct EDAYU and hold.

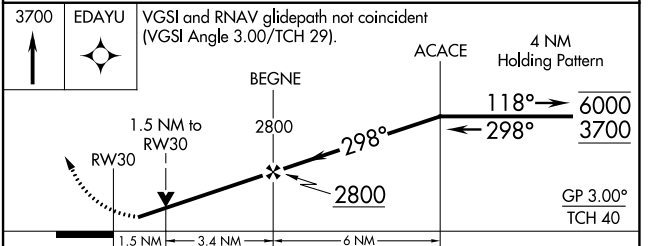
AWOS-3 118.575	MINNEAPOLIS CENTER 128.5 306.2	CTAF 122.9
--------------------------	--	----------------------



ELEV 1194	TDZE 1192
-----------	-----------



MIRL Rwy 12-30	REIL Rwy 12 and 30
----------------	--------------------



CATEGORY	A	B	C	D
LPV DA	1442-1		250 (300-1)	
LNAV/VNAV DA	1573-1½		381 (400-1½)	
LNAV MDA	1680-1	488 (500-1)	1680-1¾	488 (500-1¾)
<input checked="" type="checkbox"/> CIRCLING	1700-1	506 (600-1)	1800-1¾ 606 (700-1¾)	1960-2½ 766 (800-2½)

NC-1, 08 AUG 2024 to 05 SEP 2024

NC-1, 08 AUG 2024 to 05 SEP 2024