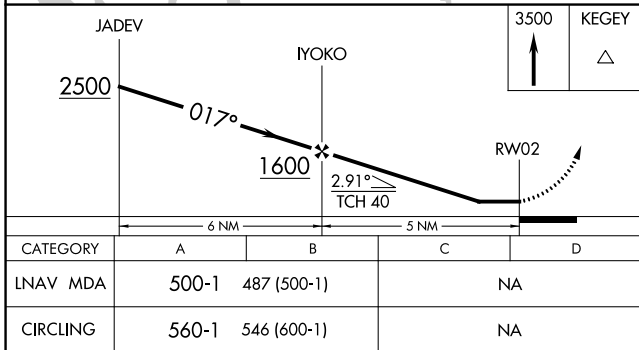
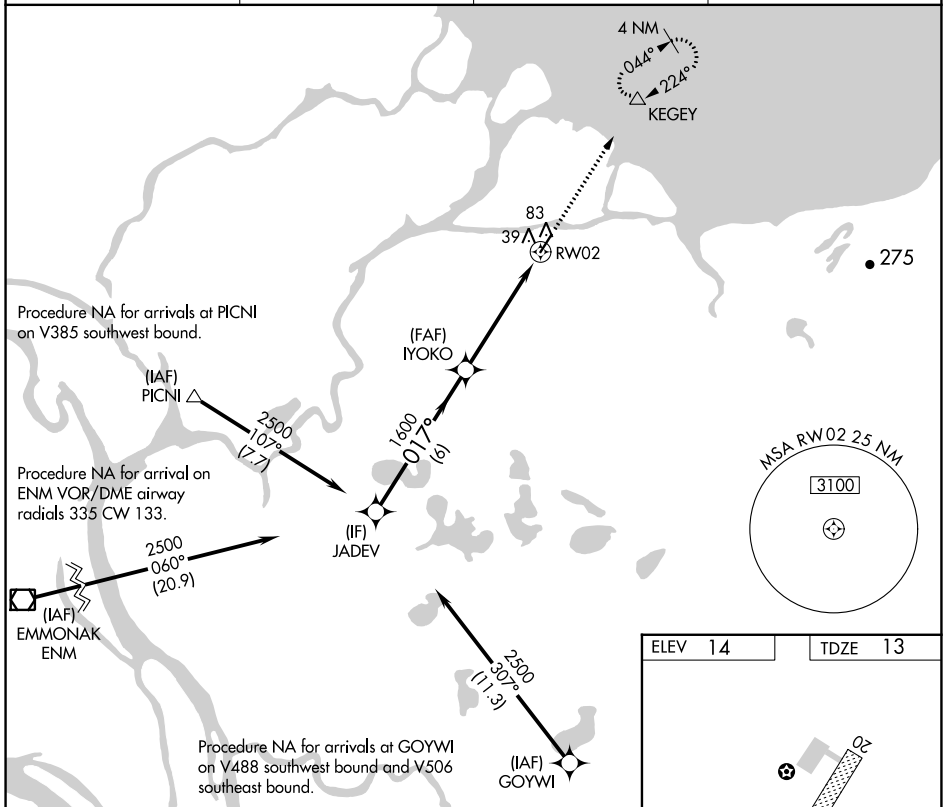


# RNAV (GPS) RWY 2

KOTLIK (2A9) (PFKO)

APP CRS <b>017°</b>	Rwy Idg TDZE Apt Elev	<b>4400</b> <b>13</b> <b>14</b>
------------------------	-----------------------------	---------------------------------------

RNP APCH.		MISSED APPROACH: Climb to 3500 direct KEGEY and hold.	
<p>▼ Circling Rwy 20 NA at night.</p> <p>▲ NA Rwy 2 helicopter visibility reduction below 3/4 SM NA.</p>			
AWOS-3P <b>118.1</b>	ENM/PAEM AWOS-3P <b>135.35</b>	ANCHORAGE CENTER <b>124.0</b>	CTAF <b>122.90</b>



ELEV 14	TDZE 13
MIRL Rwy 2-20	

AK, 11 JUL 2024 to 05 SEP 2024

AK, 11 JUL 2024 to 05 SEP 2024