

WAAS CH <b>97543</b> <b>W26A</b>	APP CRS <b>260°</b>	Rwy Idg TDZE Apt Elev	<b>2983</b> <b>299</b> <b>299</b>
--	------------------------	-----------------------------	---

# RNAV (GPS) RWY 26

TELLER (TER) (PATE)

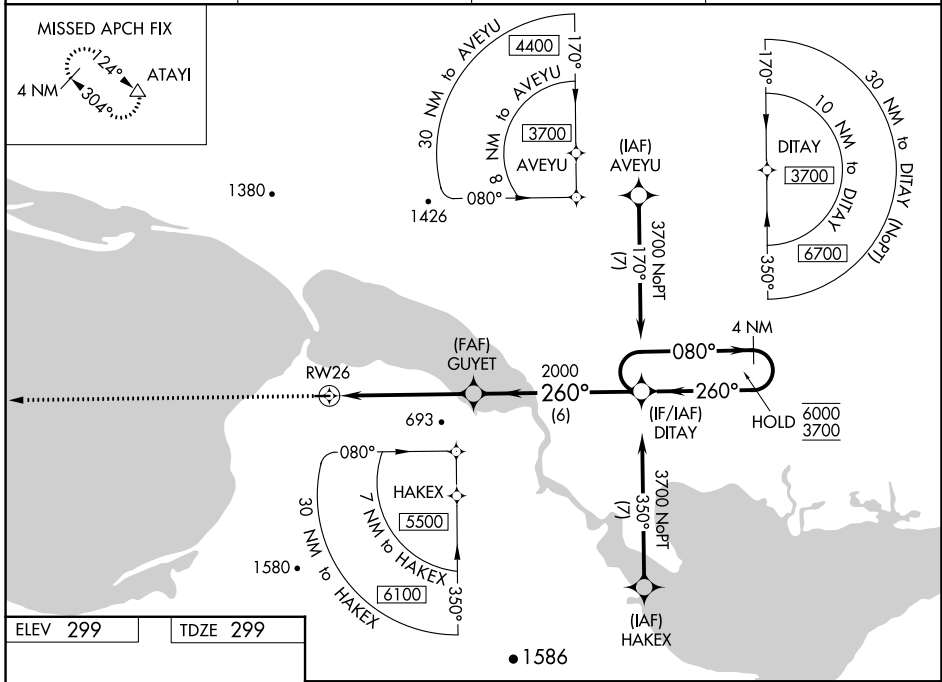
RNP APCH.

**⚠** Circling NA south of Rwy 8-26. For uncompensated Baro-VNAV systems, LNAV/VNAV NA below -23°C or above 54°C.

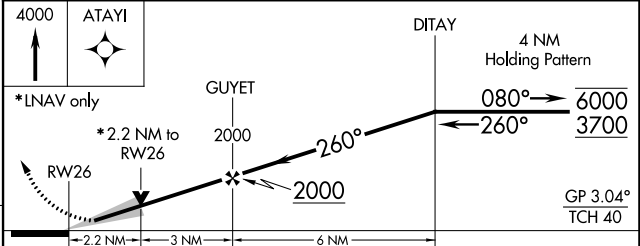
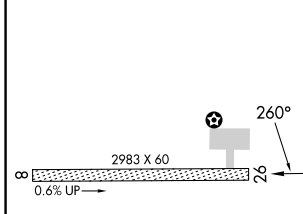
**❄** -36°C

MISSED APPROACH: Climb to 4000 direct ATAYI and hold.

AWOS-3P <b>118.375</b>	ANCHORAGE CENTER <b>133.3 290.4</b>	NOME RADIO <b>135.6</b>	CTAF <b>123.0</b>
---------------------------	--	----------------------------	----------------------



ELEV 299	TDZE 299
----------	----------



CATEGORY	A	B	C	D
LPV DA	549-1 250 (300-1)			NA
LNAV/VNAV DA	549-1 250 (300-1)			NA
LNAV MDA	1060-1 761 (800-1)	1060-1¼ 761 (800-1¼)	1060-2½ 761 (800-2½)	NA
<b>C</b> CIRCLING	1060-1 761 (800-1)	1060-1¼ 761 (800-1¼)	1060-2¾ 761 (800-2¾)	NA

AK, 11 JUL 2024 to 05 SEP 2024

AK, 11 JUL 2024 to 05 SEP 2024