

APP CRS	Rwy Idg	N/A
333°	TDZE	N/A
	Apt Elev	63

RNAV (GPS)-A

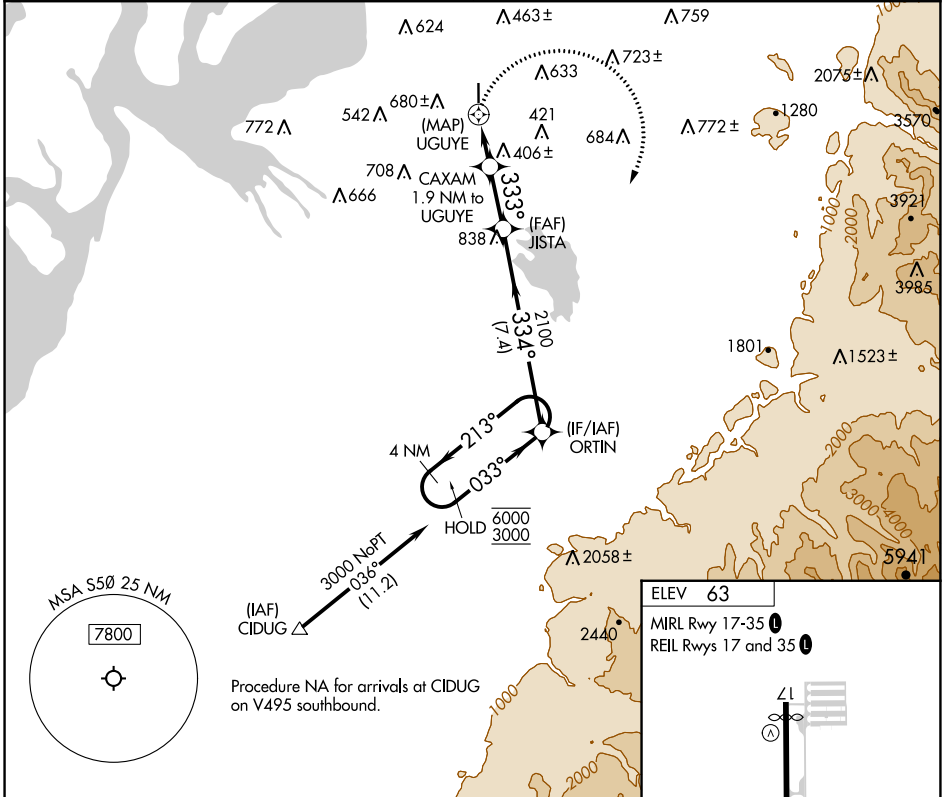
AUBURN MUNI (S50)

RNP APCH - GPS.

NA Circling NA west of Rwy 17-35. Rwy 17 and 35 helicopter visibility reduction below 1 SM NA. When Circling to Rwy 17, 35 at night, operational VGSI required, remain on or above VGSI glidepath until threshold. Use Seattle-Tacoma Intl altimeter setting. Procedure NA at night when VGSI inoperative.

MISSED APPROACH: Climbing right turn to 3000 direct ORTIN and hold.

SEA ASOS 118.0	SEATTLE APP CON 123.85	CLNC DEL 123.85	UNICOM 122.975 (CTAF)
--------------------------	----------------------------------	---------------------------	---------------------------------



NW-1, 08 AUG 2024 to 05 SEP 2024

NW-1, 08 AUG 2024 to 05 SEP 2024

3000	ORTIN	ORTIN	4 NM Holding Pattern
CATEGORY	A	B	C
CIRCLING	920-1¼ 857 (900-1¼)	1040-1½ 977 (1000-1½)	NA

