

(FOLZZ3.FOLZZ) 24081  
**FOLZZ THREE DEPARTURE(RNAV)**

AL- 10263 (FAA)  
**MIAMI HOMESTEAD GENERAL AVIATION (X51)**  
 HOMESTEAD, FLORIDA

MIAMI DEP CON  
 125.5 354.1  
 AWOS-3  
 118.375  
 CTAF  
 122.8

**TOP ALTITUDE:  
 ASSIGNED BY ATC**

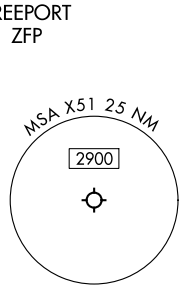
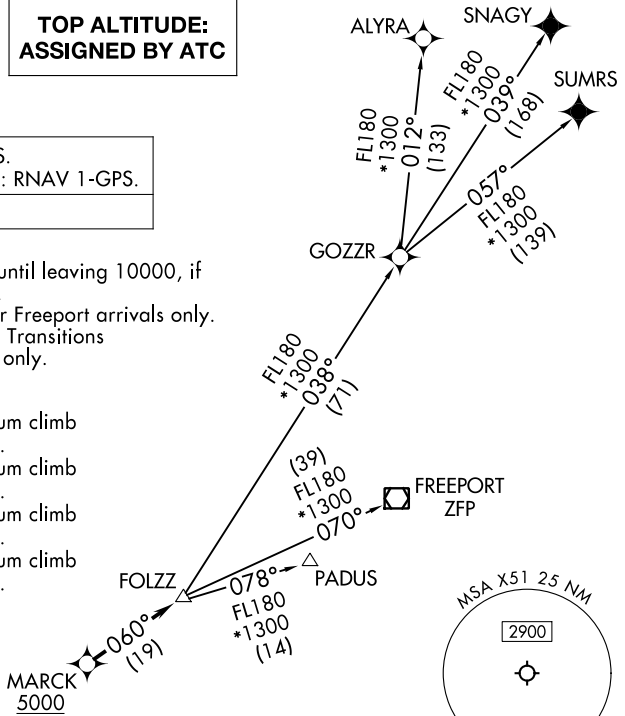
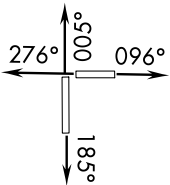
RNAV-1 DME/DME/IRU or GPS.  
 SNAGY and SUMRS Transitions: RNAV 1-GPS.

RADAR required.

NOTE: Jet aircraft only.  
 NOTE: Accelerate to 250K until leaving 10000, if  
 unable, advise ATC.  
 NOTE: PADUS Transition for Freeport arrivals only.  
 NOTE: SNAGY and SUMRS Transitions  
 for European traffic only.

**TAKEOFF MINIMUMS**

- Rwy 10: Standard with minimum climb of 500'/NM to 2400.
- Rwy 18: Standard with minimum climb of 500'/NM to 1800.
- Rwy 28: Standard with minimum climb of 500'/NM to 1900.
- Rwy 36: Standard with minimum climb of 500'/NM to 2200.



NOTE: Chart not to scale.

**DEPARTURE ROUTE DESCRIPTION**

TAKEOFF RUNWAY 10: Climb on heading 096° or as assigned by ATC for RADAR vectors to cross MARCK at or above 5000, thence. . .  
TAKEOFF RUNWAY 18: Climb on heading 185° or as assigned by ATC for RADAR vectors to cross MARCK at or above 5000, thence. . .  
TAKEOFF RUNWAY 28: Climb on heading 276° or as assigned by ATC for RADAR vectors to cross MARCK at or above 5000, thence. . .  
TAKEOFF RUNWAY 36: Climb on heading 005° or as assigned by ATC for RADAR vectors to cross MARCK at or above 5000, thence. . .

. . .on track 060° to FOLZZ, then on assigned transition. Maintain ATC assigned altitude, expect filed altitude within 10 minutes after departure.

- ALYRA TRANSITION (FOLZZ3.ALYRA)
- FREEPORT TRANSITION (FOLZZ3.ZFP)
- GOZZR TRANSITION (FOLZZ3.GOZZR)
- PADUS TRANSITION (FOLZZ3.PADUS)
- SNAGY TRANSITION (FOLZZ3.SNAGY)
- SUMRS TRANSITION (FOLZZ3.SUMRS)

**FOLZZ THREE DEPARTURE(RNAV)**  
 (FOLZZ3.FOLZZ) 21MAR24

HOMESTEAD, FLORIDA  
**MIAMI HOMESTEAD GENERAL AVIATION (X51)**

SE-3, 08 AUG 2024 to 05 SEP 2024

SE-3, 08 AUG 2024 to 05 SEP 2024