

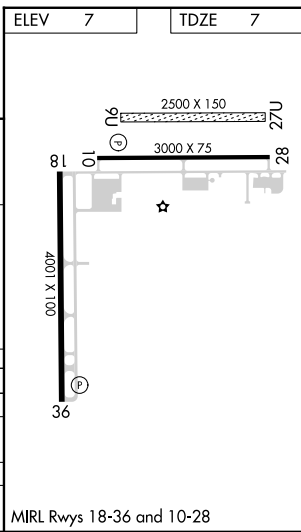
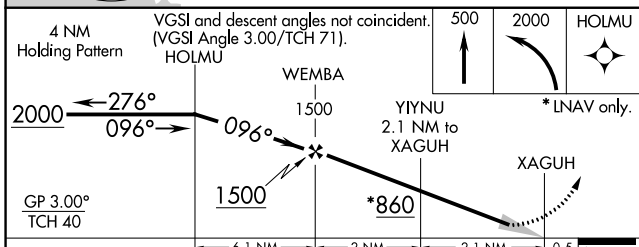
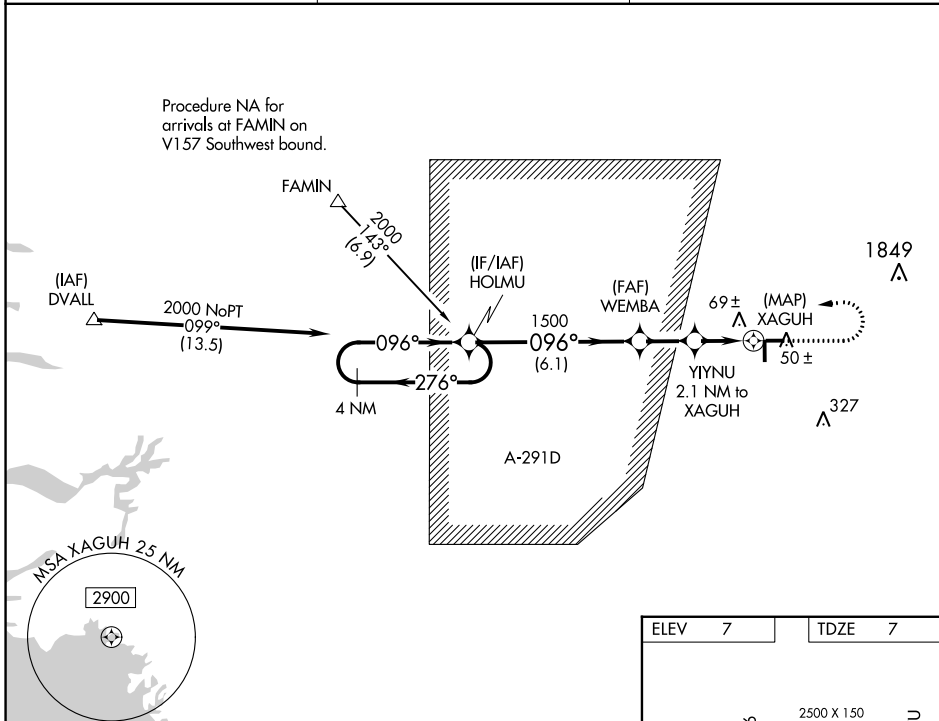
WAAS CH <b>42825</b> <b>W10A</b>	APP CRS <b>096°</b>	Rwy Idg TDZE Apt Elev	<b>3000</b> <b>7</b> <b>7</b>
--	------------------------	-----------------------------	-------------------------------------

# RNAV (GPS) RWY 10

MIAMI HOMESTEAD GENERAL AVIATION (X51)

<p><b>NA</b></p> <p>Baro-VNAV NA when using Miami Exec altimeter setting. For uncompensated Baro-VNAV systems, LNAV/VNAV NA below -15°C (5°F) or above 54°C (130°F). DME/DME RNP-0.3 NA. When local altimeter setting not received, use Miami Exec altimeter setting: increase LPV DA to 284; increase LNAV/VNAV DA to 284; increase all MDA 40 feet.</p>	<p>MISSED APPROACH: Climb to 500 then climbing left turn to 2000 direct HOLMU and hold.</p>
---	---

AWOS-3 <b>118.375</b>	MIAMI APP CON <b>125.5 354.1</b>	UNICOM <b>122.8 (CTAF)</b>
--------------------------	-------------------------------------	-------------------------------



CATEGORY	A	B	C	D
LPV DA	257-7/8	250 (300-7/8)		NA
LNAV/VNAV DA	257-7/8	250 (300-7/8)		NA
LNAV MDA	320-1	313 (400-1)		NA
CIRCLING	380-1 373 (400-1)	460-1 453 (500-1)		NA

SE-3, 08 AUG 2024 to 05 SEP 2024

SE-3, 08 AUG 2024 to 05 SEP 2024