

APP CRS	Rwy Idg	3200
003°	TDZE	80
	Apt Elev	80

RNAV (GPS) RWY 36

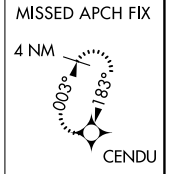
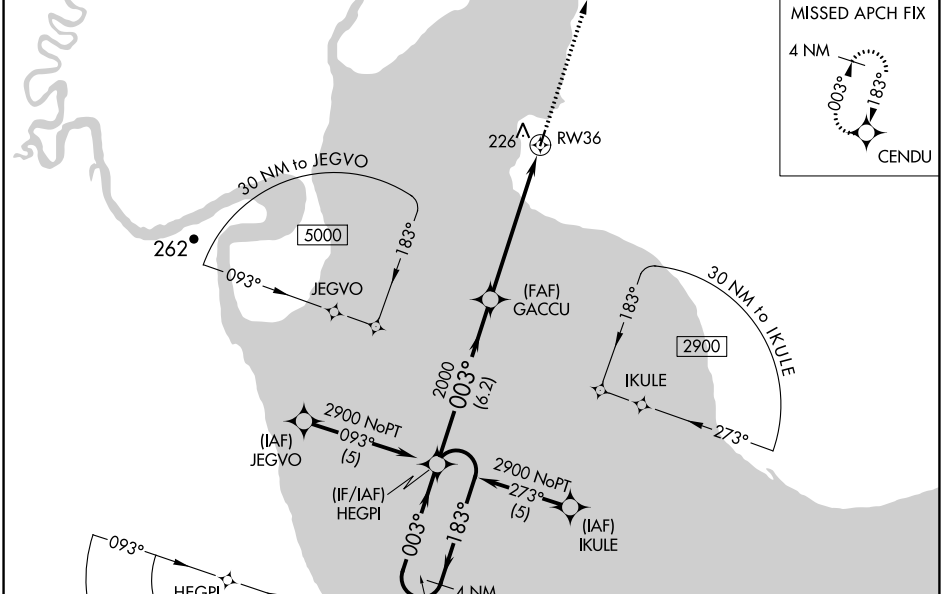
CLARKS POINT (CLP) (PFCL)

RNP APCH-GPS.

⚠ Rwy 36 helicopter visibility reduction below 1 SM NA. Rwy 36 Straight-in and Circling minimums NA at night. When local altimeter setting not received, use Dillingham altimeter setting and increase all MDAs 40 feet and LNAV visibility Cat C/D 1/2 SM.

MISSED APPROACH: Climb to 2900 direct CENDU and hold.

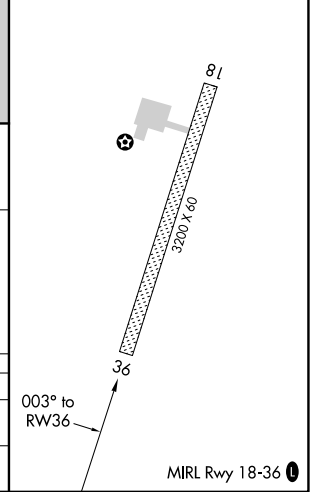
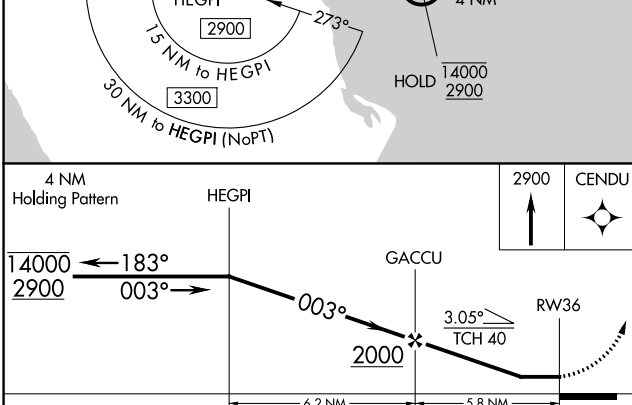
AWOS-3P 121.45	ANCHORAGE CENTER 132.75 282.35	CTAF 122.90
--------------------------	--	-----------------------



AK, 11 JUL 2024 to 05 SEP 2024

AK, 11 JUL 2024 to 05 SEP 2024

ELEV 80	TDZE 80
---------	---------



CATEGORY	A	B	C	D
LNAV MDA	660-1	580 (600-1)	660-1 5/8	580 (600-1 5/8)
CIRCLING	660-1 580 (600-1)	700-1 620 (700-1)	700-1 3/4 620 (700-1 3/4)	700-2 620 (700-2)