

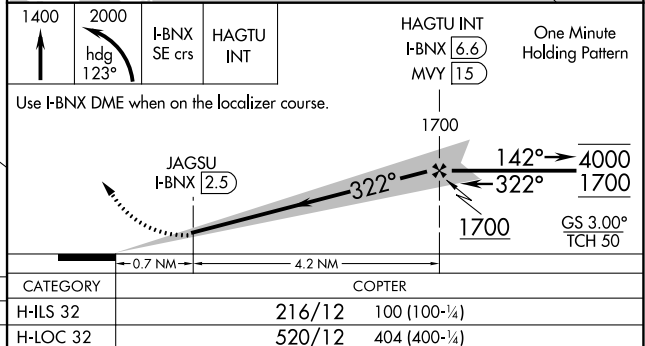
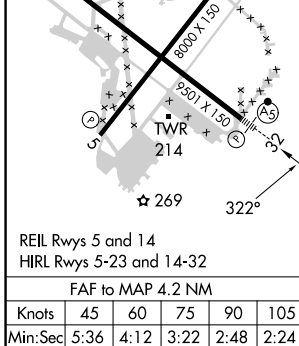
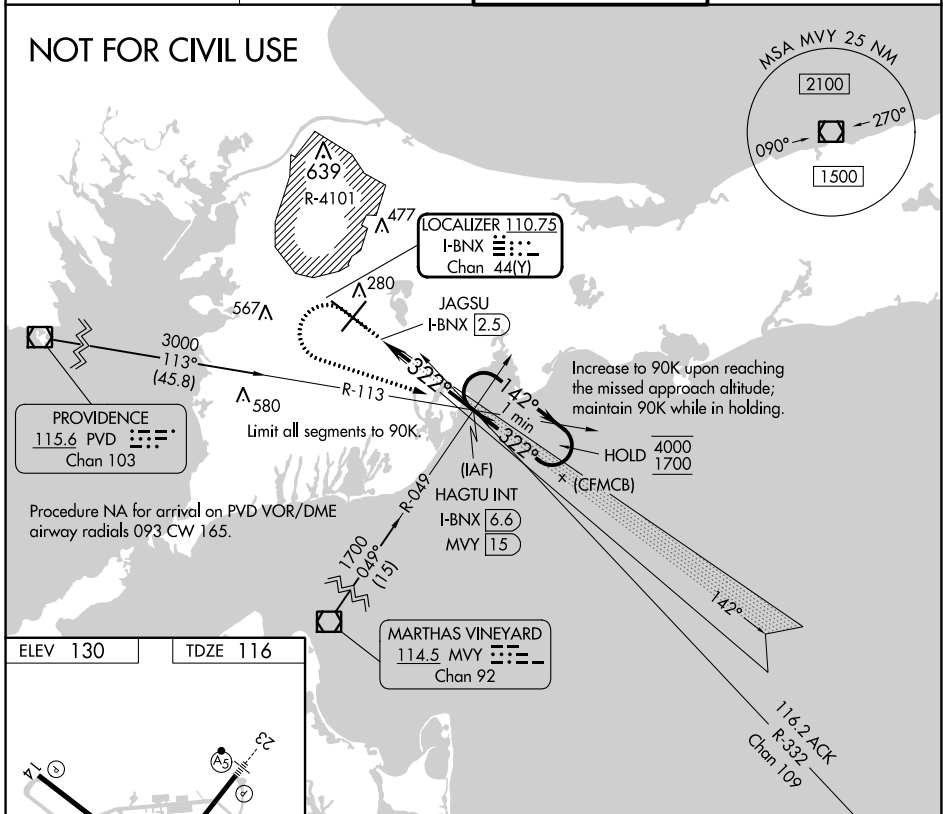
LOC/DME I-BNX <b>110.75</b> Chan <b>44(Y)</b>	APP CRS <b>322°</b>	Rwy Idg TDZE <b>116</b> Apt Elev <b>130</b>	<b>9501</b>
---	------------------------	---	-------------

# COPTER ILS Y or LOC Y RWY 32

CAPE COD COAST GUARD AIR STATION (F'MH)

<p><b>NA</b> U.S. Coast Guard use only. For inop ALS, increase visibility to RVR 2400.</p>	<p>MALS R </p>	<p>MISSED APPROACH: Climb to 1400 then climbing left turn to 2000 on heading 123° and I-BNX localizer SE course to HAGTU INT/I-BNX 6.6 DME and hold.</p>
	<p>ATIS <b>120.475 236.825</b></p>	<p>BOSTON APP CON ★ <b>118.2 284.6</b></p>
		<p>GND CON <b>124.15 275.8</b></p>

**NOT FOR CIVIL USE**



NE-1, 08 AUG 2024 to 05 SEP 2024

NE-1, 08 AUG 2024 to 05 SEP 2024