

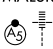
LOC/DME I-FMH 109.55 Chan 32(Y)	APP CRS 234°	Rwy Idg TDZE 126 Apt Elev 130	8000
---	------------------------	---	-------------

ILS Z or LOC Z RWY 23

CAPE COD COAST GUARD AIR STATION (F'MH)

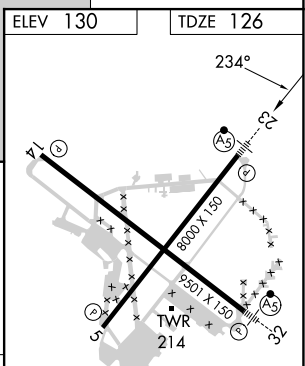
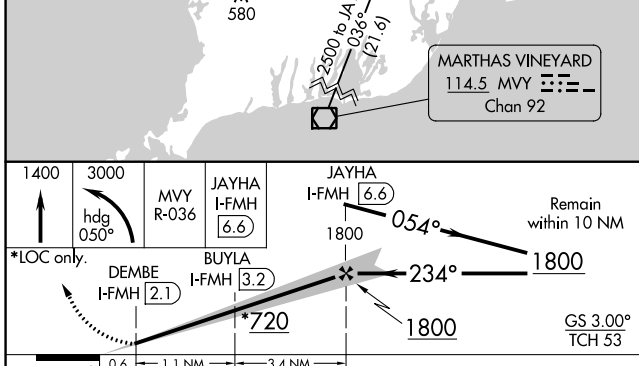
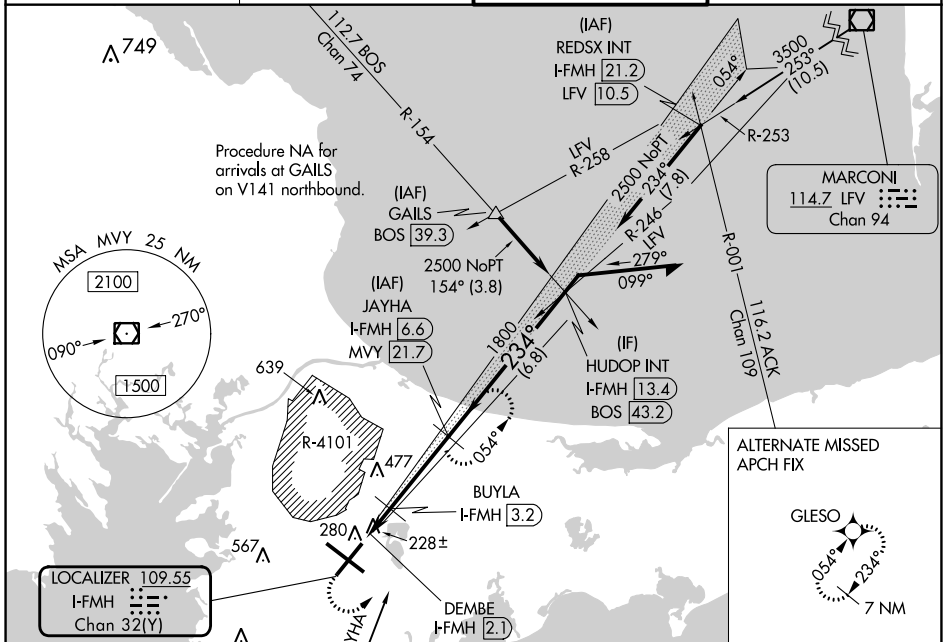
DME required.

▲ Circling NA northeast of Rwy 14 and northwest of Rwy 23. For inop ALS, increase S-LOC 23 Cats C/D visibility to RVR 5500. #RVR 1800 authorized with use of FD or AP or HUD to DA.

MALSR 

MISSED APPROACH: Climb to 1400 then climbing left turn heading 050° and MVY VOR/DME R-036 to 3000 direct JAYHA and hold.

ATIS 120.475 236.825	BOSTON APP CON ★ 118.2 284.6	COAST GUARD TOWER 128.425 291.1	GND CON 124.15 275.8
--------------------------------	--	---	--------------------------------



CATEGORY	A	B	C	D
S-ILS 23#		326/24	200 (200-½)	
S-LOC 23	480/24	354 (400-½)	480/30	354 (400-¾)
C CIRCLING	580-1 450 (500-1)	640-1 510 (600-1)	900-2¼ 770 (800-2¼)	900-2½ 770 (800-2½)

REIL Rwys 5 and 14
HIRL Rwys 5-23 and 14-32

NE-1, 08 AUG 2024 to 05 SEP 2024

NE-1, 08 AUG 2024 to 05 SEP 2024