

WAAS CH <b>93911</b> <b>W32A</b>	APP CRS <b>323°</b>	Rwy ldg <b>7140</b> TDZE <b>1302</b> Apt Elev <b>1302</b>
----------------------------------------	------------------------	-----------------------------------------------------------------

# RNAV (GPS) RWY 32

BRANSON (BBG)

RNP APCH.

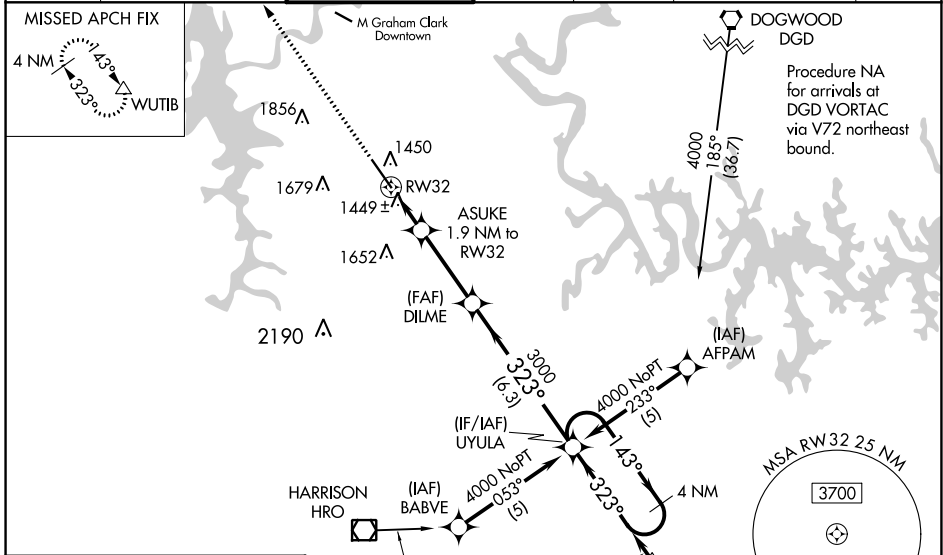
**▽** When local altimeter setting not received, use Harrison altimeter setting:  
**▲** increase LPV DA to 1549 feet; increase LNAV/VNAV DA to 1804 feet and all visibilities ¼ SM; increase all MDAs 60 feet and visibility Cats C and D ½ SM. VDP and Baro-VNAV NA when using Harrison altimeter setting. For uncompensated Baro-VNAV systems, LNAV/VNAV NA below -17°C (2°F) or above 46°C (114°F). Inop table does not apply.

MALSF

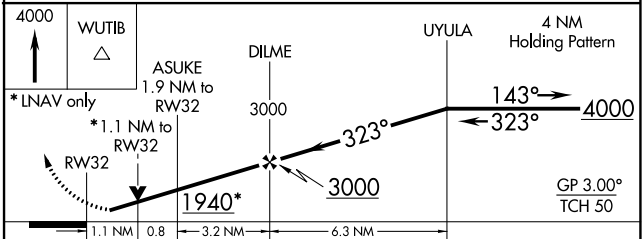
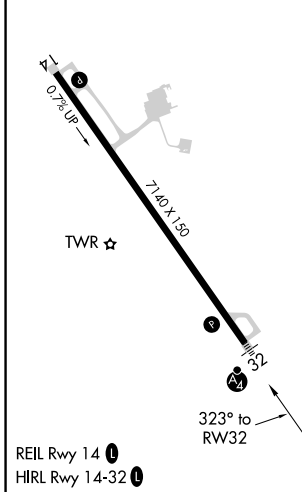


MISSED APPROACH: Climb to 4000 direct WUTIB and hold.

ATIS <b>124.625</b>	SPRINGFIELD APP CON <b>126.35</b>	BRANSON TOWER ★ <b>128.15 (CTAF) 0</b>	GND CON <b>118.4</b>	CLNC DEL <b>118.4</b>	SPRINGFIELD CLNC DEL <b>126.35</b> (When tower closed)	UNICOM <b>122.95</b>
------------------------	--------------------------------------	-------------------------------------------	-------------------------	--------------------------	--------------------------------------------------------------	-------------------------



ELEV 1302	<b>D</b>	TDZE 1302
-----------	----------	-----------



CATEGORY	A	B	C	D
LPV DA	1502-1		200 (200-1)	
LNAV/VNAV DA	1757-1½ 455 (500-1½)			
LNAV MDA	1700-1 398 (400-1)		1700-1¼ 398 (400-1¼)	
CIRCLING	1760-1 458 (500-1)	1900-1 598 (600-1)	2220-2¾ 918 (1000-2¾)	2220-3 918 (1000-3)

NC-3, 08 AUG 2024 to 05 SEP 2024

NC-3, 08 AUG 2024 to 05 SEP 2024