

WAAS CH <b>87138</b> <b>W13A</b>	APP CRS <b>134°</b>	Rwy Idg <b>4201</b> TDZE <b>1318</b> Apt Elev <b>1318</b>
--	------------------------	---

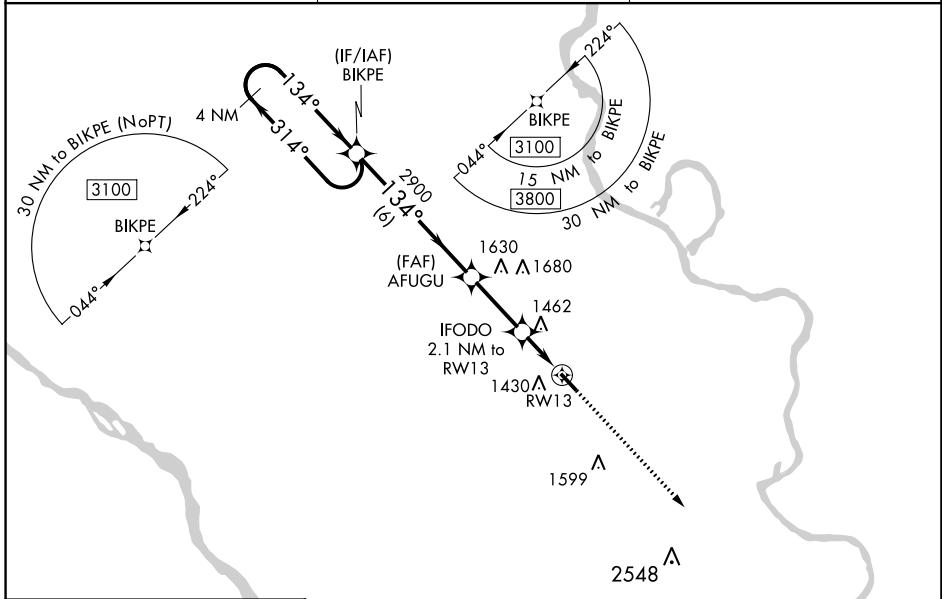
# RNAV (GPS) RWY 13

BLAIR EXEC (BTA)

⚠ For uncompensated Baro-VNAV systems, LNAV/VNAV NA below -17°C (2°F) or above 54°C (130°F). Baro-VNAV and VDP NA when using Eppley Airfield altimeter setting.  
 ⚠ DME/DME RNP-0.3 NA. Helicopter visibility reduction below ¾ SM NA. When local altimeter setting not received, use Eppley Airfield altimeter setting and increase LPV and LNAV/VNAV DA to 1642 and visibility to 1 ½ mile all Cats, increase all MDA 80 feet and LNAV Cat C visibility to 1 ¾ mile.

MISSED APPROACH: Climb to 4000 direct FALUK and hold.

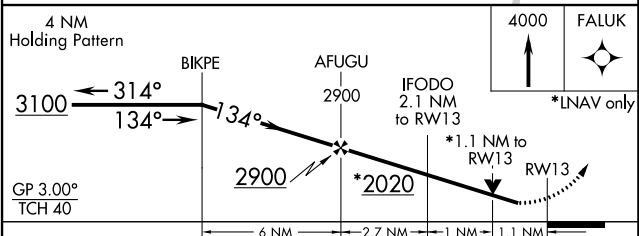
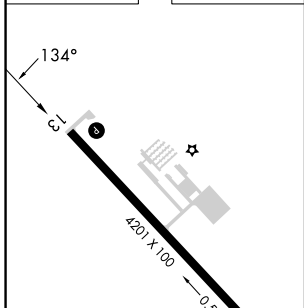
AWOS-3 <b>120.225</b>	OMAHA APP CON <b>120.1 354.05</b>	UNICOM <b>123.05 (CTAF) 0</b>
--------------------------	--------------------------------------	----------------------------------



NC-2, 08 AUG 2024 to 05 SEP 2024

NC-2, 08 AUG 2024 to 05 SEP 2024

ELEV 1318	TDZE 1318
-----------	-----------



CATEGORY	A	B	C	D
LPV DA	1568-7/8	250 (300-7/8)		NA
LNAV/VNAV DA	1568-7/8	250 (300-7/8)		NA
LNAV MDA	1720-1	402 (500-1)	1720-1 1/8 402 (500-1 1/8)	NA
<b>C</b> CIRCLING	1740-1 422 (500-1)	1780-1 462 (500-1)	1780-2 462 (500-1)	NA

REIL Rwy 31 **0**  
MIRL Rwy 13-31 **0**