

WAAS CH <b>40038</b> <b>W16A</b>	APP CRS <b>193°</b>	Rwy Idg TDZE Apt Elev	<b>2901</b> <b>35</b> <b>35</b>
--	------------------------	-----------------------------	---------------------------------------

# RNAV (GPS) RWY 16

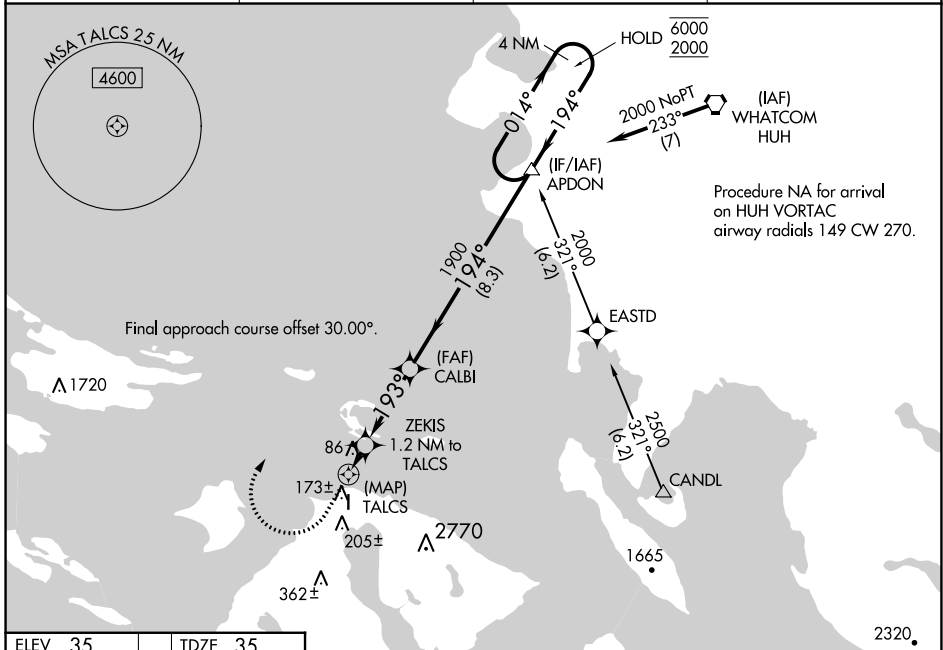
ORCAS ISLAND (ORS)

**RNP APCH.**

**⚠** Circling to Rwy 34 NA at night. Rwy 16 helicopter visibility reduction below 3/4 SM NA. When local altimeter setting not received, use Friday Harbor altimeter setting and increase all MDA 40 feet.

**MISSED APPROACH:** Climb to 440 then climbing right turn to 2000 direct APDON and hold.  
# Missed approach requires minimum climb of 385 feet per NM to 980.

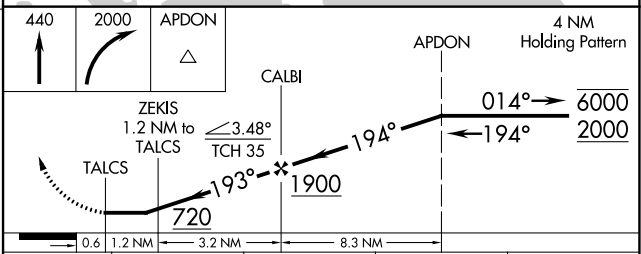
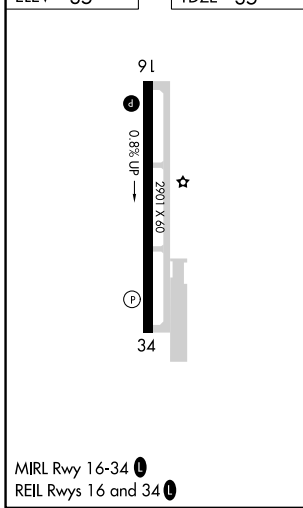
AWOS-3 <b>135.425</b>	WHIDBEY APP CON <b>118.2 285.65 (SOUTH)</b>	VICTORIA APP CON <b>132.7 290.8 (NORTH)</b>	CTAF <b>128.250</b>
--------------------------	--	--	------------------------



NW-1, 08 AUG 2024 to 05 SEP 2024

NW-1, 08 AUG 2024 to 05 SEP 2024

ELEV 35	TDZE 35
---------	---------



CATEGORY	A	B	C	D
LP MDA #	340-1	305 (400-1)		NA
LP MDA	400-1	365 (400-1)		NA
LNAV MDA #	440-1	405 (500-1)		NA
LNAV MDA	700-1	665 (700-1)		NA
<b>Ⓛ</b> CIRCLING	1120-1¼ 1085 (1100-1¼)	1820-1½ 1785 (1800-1½)		NA