

WAAS CH 99538 W34A	APP CRS 327°	Rwy Idg TDZE Apt Elev	2901 35 35
--	------------------------	-----------------------------	---------------------------------------

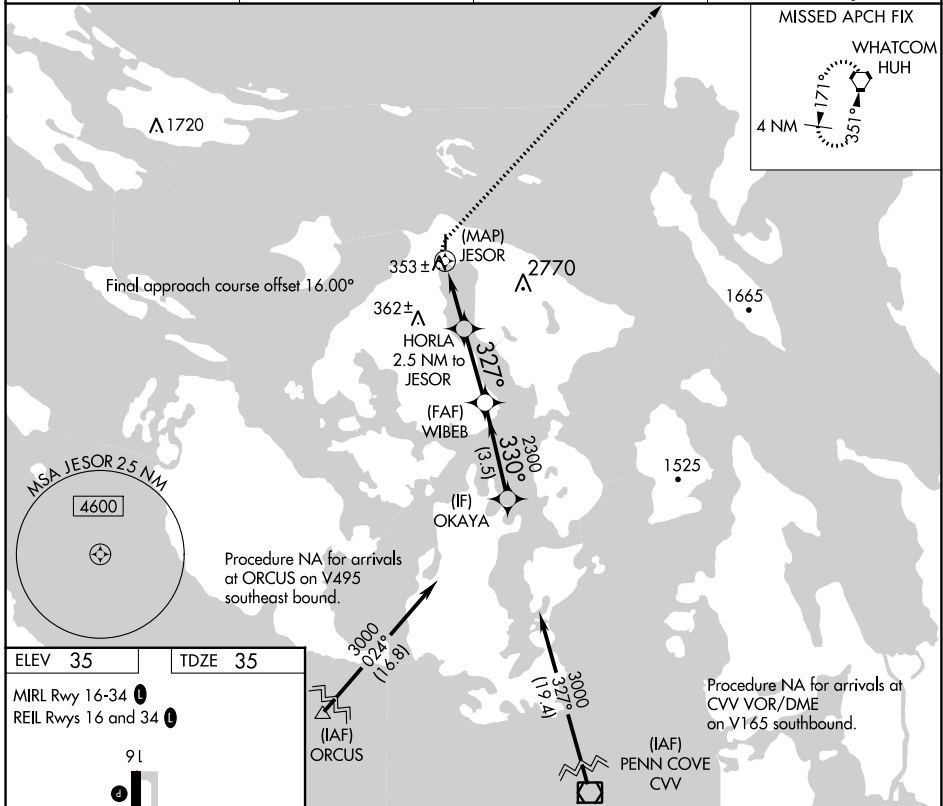
RNAV (GPS) RWY 34

ORCAS ISLAND (ORS)

⚠ DME/DME RNP-0.3 NA. Helicopter visibility reduction below 1 SM NA.
⚠ WAAS required, if unable see RNAV GPS-A. When local altimeter setting not received, use Friday Harbor altimeter setting and increase all MDA 40 feet and LP Cat B visibility ¼ mile. Night landing: Rwy 34 NA.

MISSED APPROACH: Climbing right turn to 2000 direct HUH VORTAC and hold.

AWOS-3 135.425	WHIDBEY APP CON 118.2 285.65 (SOUTH)	VICTORIA APP CON 132.7 290.8 (NORTH)	CTAF 128.250
--------------------------	--	--	------------------------



ELEV 35	TDZE 35
MIRL Rwy 16-34	REIL Rwys 16 and 34

2000	HUH	VGSi and descent angles not coincident (VGSi Angle 4.00/TCH 42).	
0.5	2.5 NM	2.7 NM	3.5 NM
CATEGORY	A	B	C D
LP MDA	760-1	725 (800-1)	NA
C CIRCLING	1120-1¼ 1085 (1100-1¼)	1820-1½ 1785 (1800-1½)	NA

NW-1, 08 AUG 2024 to 05 SEP 2024

NW-1, 08 AUG 2024 to 05 SEP 2024