

RNAV (GPS) RWY 8

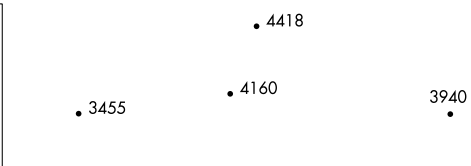
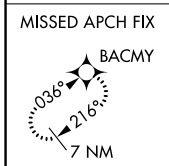
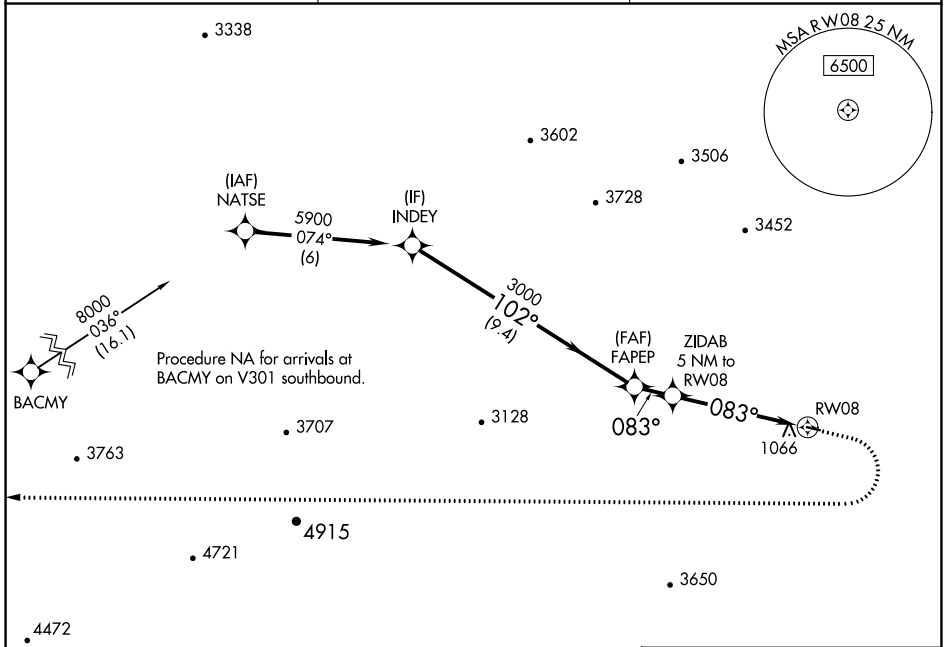
CENTRAL (CEM) (PACE)

APP CRS	Rwy Idg	2661
083°	TDZE	936
	Apt Elev	937

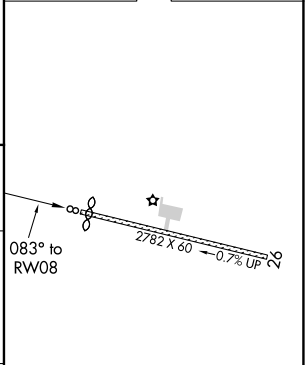
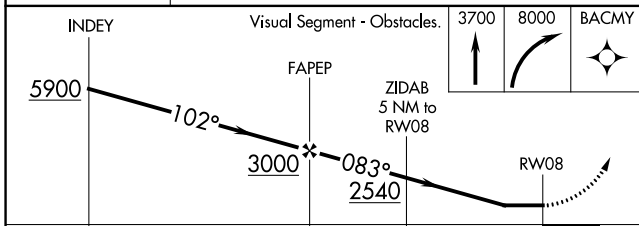
NA DME/DME RNP-0.3 NA. Use Fort Yukon altimeter setting; when not received, procedure NA. Helicopter visibility reduction below 1 SM NA. Night Landing: Rwy 8 NA.

MISSED APPROACH: Climb to 3700 then climbing right turn to 8000 direct BACMY and hold.

FYU/PFYU AWOS-3P 125.8	ANCHORAGE CENTER 135.0 284.7	CTAF 122.9
----------------------------------	--	----------------------



ELEV 937	TDZE 936
----------	----------



CATEGORY	A	B	C	D
LNVA MDA	2420-1¼ 1484 (1500-1¼)	2420-1½ 1484 (1500-1½)		NA
CIRCLING	2420-1¼ 1483 (1500-1¼)	2420-1½ 1483 (1500-1½)		NA

MIRL Rwy 8-26

AK, 11 JUL 2024 to 05 SEP 2024

AK, 11 JUL 2024 to 05 SEP 2024