

APP CRS	Rwy Idg	4500
269°	TDZE	129
	Apt Elev	129

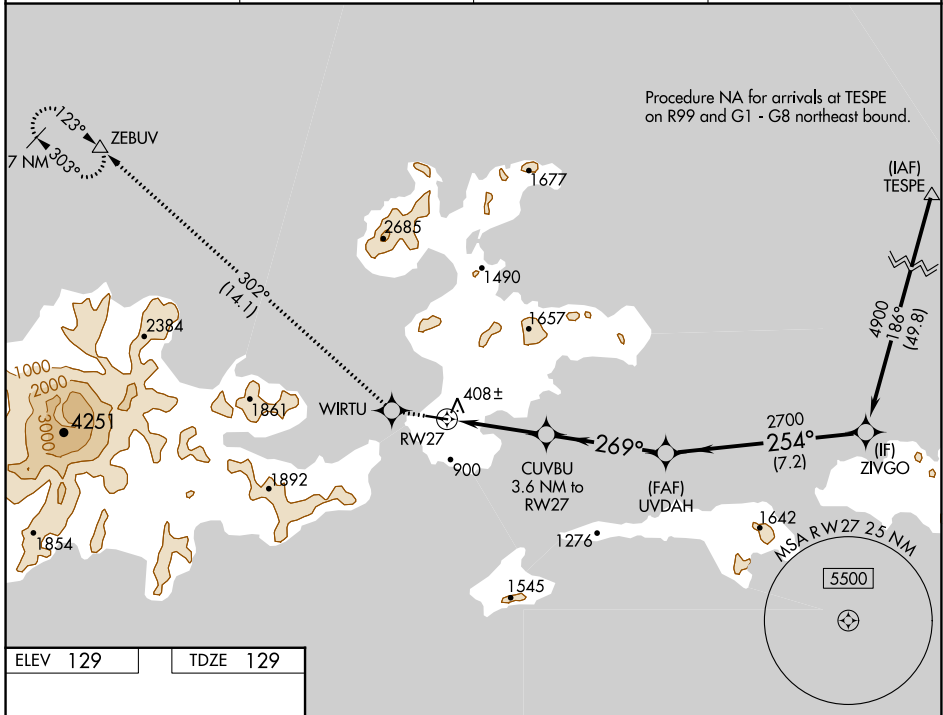
RNAV (GPS) RWY 27

AKUTAN (7AK)(PAUT)

⚠ For uncompensated Baro-VNAV systems, LNAV/VNAV NA below -19°C (-2°F) or above 54°C (130°F). DME/DME RNP-0.3 NA.
⚠ Visibility reduction by helicopters below 1 SM NA. Procedure NA at night.

MISSED APPROACH: Climb to 9000 direct WIRTU and on track 302° to ZEBUV and hold, continue climb-in-hold to 9000.

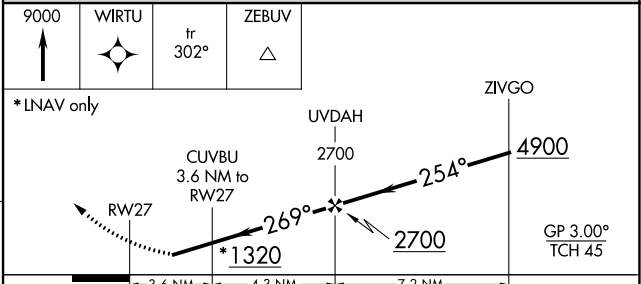
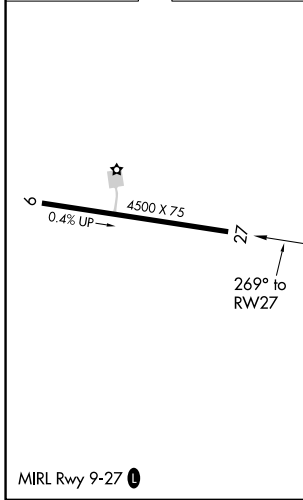
AWOS-3P 129.05	ANCHORAGE CENTER 121.4	GCO 130.3	CTAF 122.90
--------------------------	----------------------------------	---------------------	-----------------------



AK, 11 JUL 2024 to 05 SEP 2024

AK, 11 JUL 2024 to 05 SEP 2024

ELEV 129	TDZE 129
----------	----------



CATEGORY	A	B	C	D
LNAV/VNAV DA	848-2½		719 (800-2½)	
LNAV MDA	1140-1¼ 1011 (1100-1¼)	1140-1½ 1011 (1100-1½)	1140-3	1011 (1100-3)
C CIRCLING	1140-1¼ 1011 (1100-1¼)	1200-1½ 1071 (1100-1½)	1600-3 1471 (1500-3)	1960-3 1831 (1900-3)