

WAAS CH 42538 W31A	APP CRS 313°	Rwy Idg 5701 TDZE 2965 Apt Elev 2965
--	------------------------	---

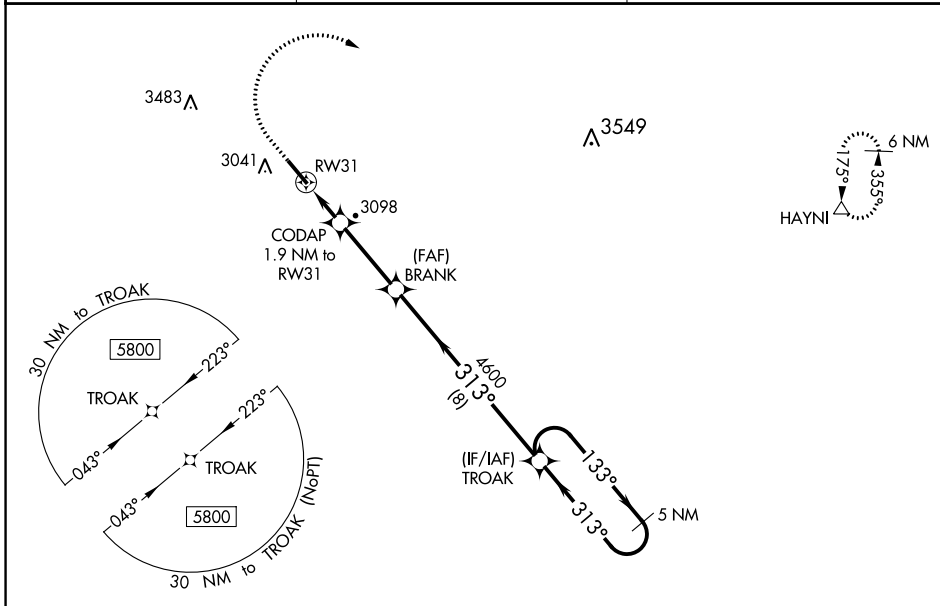
RNAV (GPS) RWY 31

BOWMAN RGNL (BWW)

⚠ For uncompensated Baro-VNAV systems, LNAV/VNAV NA below -20°C (-4°F) or above 54°C (130°F). DME/DME RNP-0.3 NA. When local altimeter setting not received, use Hettinger altimeter setting and increase all DA 102 feet, and all MDA 120 feet; increase LPV and LNAV/VNAV visibility ¼ mile all Cats, increase LNAV Cat C visibility ¼ mile. Baro-VNAV and VDP NA when using Hettinger altimeter setting.

MISSED APPROACH:
Climb to 3500 then climbing right turn to 6000 direct HAYNI and hold.

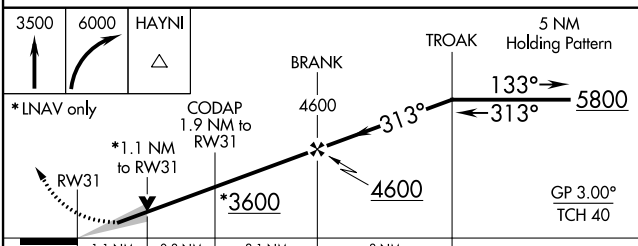
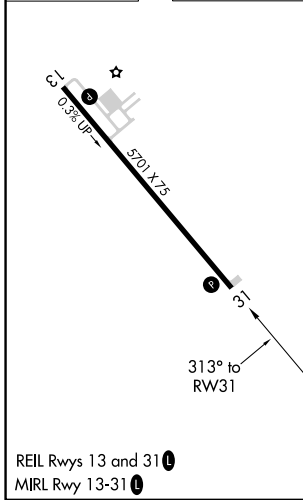
AWOS-3PT 118.075	SALT LAKE CITY CENTER 126.85 305.2	UNICOM 122.8 (CTAF)
----------------------------	--	-------------------------------



NC-1, 08 AUG 2024 to 05 SEP 2024

NC-1, 08 AUG 2024 to 05 SEP 2024

ELEV 2965	TDZE 2965
------------------	------------------



CATEGORY	A	B	C	D
LPV DA		3215-1	250 (300-1)	
LNAV/VNAV DA		3227-1	262 (300-1)	
LNAV MDA	3360-1	395 (400-1)	3360-1½	395 (400-1½)
C CIRCLING	3380-1 415 (500-1)	3420-1 455 (500-1)	3580-1¾ 615 (700-1¾)	3580-2 615 (700-2)