

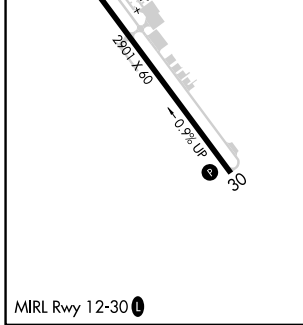
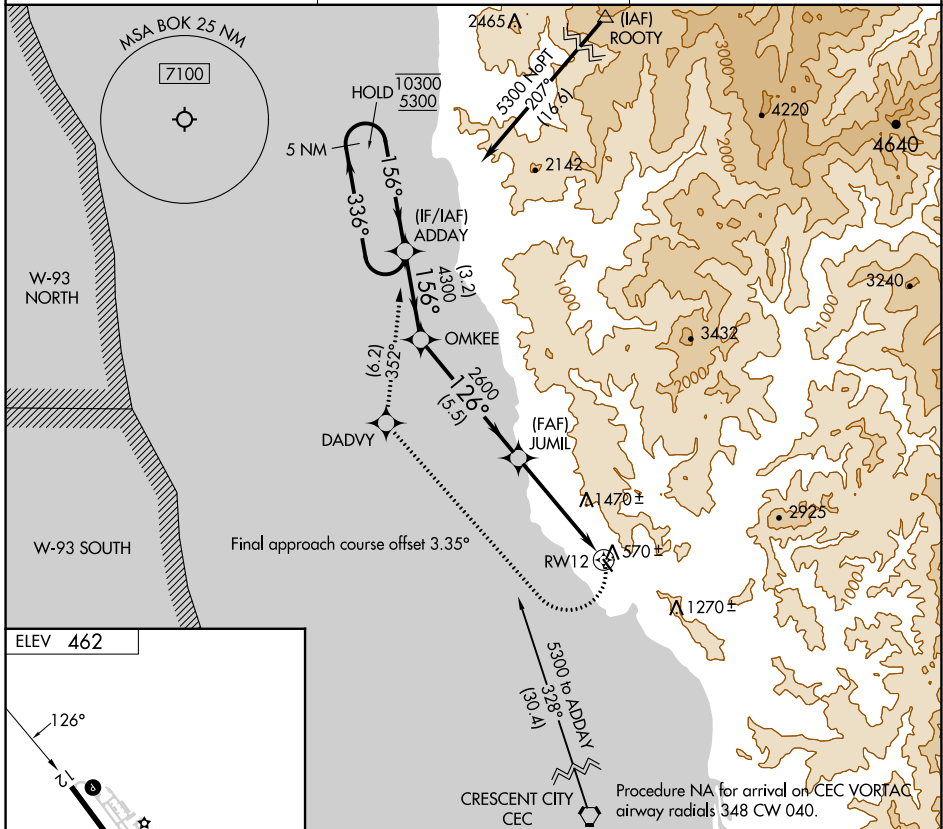
APP CRS 126°	Rwy ldg TDZE Apt Elev 462	N/A N/A 462
------------------------	--	--------------------------

RNAV (GPS)-A

BROOKINGS (BOK)

RNP APCH - GPS.	MISSED APPROACH: Climbing right turn to 5300 direct DADVY, and on track 352° to ADDAY and hold, continue climb in hold to 5300.
<p>Procedure NA at night. Circling NA northeast of Rwy 12-30. Rwy 12 and 30 helicopter visibility reduction below 1 SM NA.</p>	

AWOS-3PT 132.025	SEATTLE CENTER 124.85 306.3	UNICOM 122.8 (CTAF)
----------------------------	---------------------------------------	-------------------------------



5 NM Holding Pattern	ADDAY	OMKEE	JUMIL	DADVY	tr 352°	ADDAY
10300 5300	← 336°	156° →	156°	4300	126°	4.15° TCH 40
				2600		RW12
		3.2 NM	5.5 NM	4.8 NM		
CATEGORY	A	B	C	D		
CIRCLING	1600-1¼ 1138 (1200-1¼)	1600-1½ 1138 (1200-1½)			NA	

NW-1, 08 AUG 2024 to 05 SEP 2024

NW-1, 08 AUG 2024 to 05 SEP 2024