

**ILIAMNA** (ILI)(PAIL) 2 NW UTC-9(-8DT) N59°45.33' W154°55.07'  
192 B NOTAM FILE ILI

**KODIAK**  
H-1B, 2I, L-3D  
IAP

**RWY 08-26:** H5086X100 (ASPH-GRVD) MIRL

**RWY 08:** PAPI(P4L)—GA 3.0° TCH 35'. Brush.

**RWY 26:** REIL. PAPI(P4L)—GA 3.0° TCH 35'. Brush.

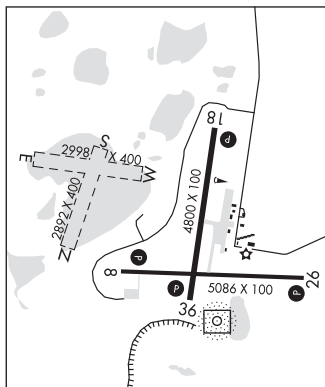
**RWY 18-36:** H4800X100 (ASPH-GRVD) MIRL

**RWY 18:** PAPI(P4L)—GA 3.0° TCH 30'. Brush.

**RWY 36:** REIL. PAPI(P4L)—GA 3.0° TCH 32'. Brush.

**SERVICE:** FUEL 100LL, JET A LGT When FSS clsd ACTVT REIL Rwy 26 and 36; PAPI Rwy 18, 36, 08 and 26; MIRL Rwy 08-26; 18-36—CTAF.

**AIRPORT REMARKS:** Attended Oct-May Mon-Fri 1700-0130Z†, Jun-Sep Mon-Wed 1500-0130Z†, Jun-Sep Thurs 1500-2300Z†. Be Alert: For VFR arrival and departure procedures see Notice in Section C. Be Alert: No line of sight btl Iliamna, Pike Lake and East Wind Lake/Strip; tfc pat and VFR arr and dep proc see Section C Notice. Snow and ice removal and haz rptng durg duty hr; exc PPR in writing - AMGR. Cold temperature airport. Altitude correction required at or below -26C. Pshl and eqpt may be on rwy. Taxi on active rwys; locked brake turns on rwy NA. There are no locked brake turns allowed on rwys. Multiple airstrips and float plane basins infov arpt; low-level hel sling load ops wi 25 NM W-NW; mnt CTAF and self announce upon entry. Safety areas soft. Rwy 08-26, 275 ft grvl sfc avbl for tundra wheel equipped acft prior to asphalt at both ends of rwy. Daylight ops only. Tsnt prkg mkd with green cones. Arpt sand lrgtr than FAA rcmd/see AC150/5200-30. See Section C notices for tfc pattern information.



**AIRPORT MANAGER:** 907-571-1261

**WEATHER DATA SOURCES:** ASOS 134.95 (907) 571-1483. ASOS prvdd when Iliamna FSS clsd. (WX CAM)

**COMMUNICATIONS:** CTAF 123.6 AFIS 134.95 (1 Jun-30 Sep 1445-0645Z†; OT ctc Kenai FSS)

FSS ILI (ILIAMNA) 1 Jun-30 Sep 1445-0645Z†; OT ctc Kenai FSS.

ILIAMNA RADIO 121.5 122.2 123.6 (LAA 123.6)

RCO 121.5 122.2 123.6 (KENAI RADIO)

ANCHORAGE CENTER APP/DEP CON 118.8

**AIRSPACE:** CLASS E svc 1445-0645Z†; other times CLASS G.

**RADIO AIDS TO NAVIGATION:** NOTAM FILE ILI.

**NDB/DME (HW)** 411 ILI Chan 91 N59°44.88' W154°54.58' at fld. 168/16A.

DME unusable:

010°-020° byd 20 NM blo 12,000''

020°-050° byd 25 NM blo 13,000''

270°-300° byd 25 NM blo 7,000''

300°-320° byd 25 NM blo 8,000''

**COMM/NAV/WEATHER REMARKS:** Iliamna FSS telephone 571-1240. For a toll free call to Kenai FSS, dial 1-866-864-1737. WX obs 16 Oct-14 May 1445-0645Z†-133.75 call sign Iliamna wx or 907-571-1240. DME located at 59°45.0'N 154°54.4'W. DME channel 91 paired with VHF freq 114.4. ASOS 134.95 when Iliamna FSS closed. AFIS operd by ILI FSS when open, OT Kenai FSS.

**WATERWAY E-W:** 2998X400 (WATER)

**WATERWAY N-S:** 2892X400 (WATER)

**WATERWAY S:** Rgt tfc.