

**KETCHIKAN HARBOR SPB** (5KE) 0 W UTC-9(-8DT) N55°20.67' W131°39.81'

**KETCHIKAN**

00 AOE NOTAM FILE KTN

**WATERWAY E-W: 3893X1000 (WATER)**

**SEAPLANE REMARKS:** Attended daylight hrs. Special Air Traffic Rules-Part 93 and Standard VFR arr and dep procedures and pattern information, see Regulatory Notices. Numerous air taxi ops in harbor. Ctc Ketchikan Radio 123.6 prior to arriving for traffic advisories. Boats, ships and log debris in harbor. One small public dock avbl.

**COMMUNICATIONS: CTAF 123.6**

**RADIO AIDS TO NAVIGATION:** NOTAM FILE ANN.

**ANNETTE ISLAND (H) (H) VOR/DME 117.1** ANN Chan 118

N55°03.62' W131°34.70' 329° 17.3 NM to fld. 184/21E.

VOR unusable:

000°-100° byd 11 NM blo 12,000'

000°-100° byd 15 NM

000°-100° byd 9 NM blo 6,500'

120°-130° byd 37 NM blo 6,000'

290°-320° byd 32 NM blo 7,000'

290°-320° byd 37 NM blo 9,000'

345°-000° byd 20 NM

DME unusable:

000°-100° byd 11 NM blo 12,000'

000°-100° byd 15 NM

000°-100° byd 9 NM blo 6,500'

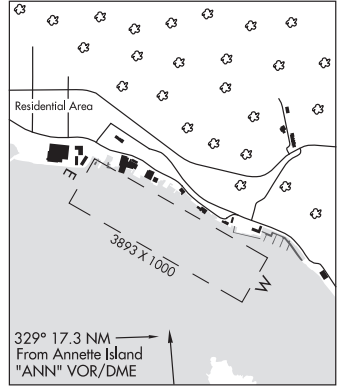
120°-130° byd 37 NM blo 6,000'

290°-320° byd 32 NM blo 7,000'

290°-320° byd 37 NM blo 9,000'

345°-000° byd 20 NM

**COMM/NAV/WEATHER REMARKS:** LC to Ketchikan FSS dial 225-9481. For a toll free call to Juneau FSS dial 1-800-WX-BRIEF.



**KETCHIKAN INTL** (KTN)(PAKT) 1 W UTC-9(-8DT) N55°21.25' W131°42.67'

**KETCHIKAN**

92 B LRA ARFF Index-See Remarks NOTAM FILE KTN

**H-1D, L-1C**

**RWY 11-29: H7500X150 (ASPH-GRVD) S-75, D-200, 2D-300**

**IAP, AD**

PCN 49 F/B/X/T HIRL

**RWY 11:** MALSR. PAPI(P4L)-GA 3.0° TCH 50'. RVR-TR Trees. Rgt tfc.

**RWY 29:** MALSR. PAPI(P4L)-GA 3.0° TCH 49'. RVR-TR

**SERVICE: FUEL 100LL, JET A LGT** When KTN FSS clsd ACTVT MALSR

Rwy 11 and 29; HIRL Rwy 11-29-CTAF. PAPI Rwy 11 and 29 on

consly. Rwy 11 PAPI unusbl byd 5 deg left and right of cntrin. Rwy 29

PAPI unusbl byd 6 NM. Apt bcn, when KTN FSS clsd on consly. Twy C

lgtS OTS indef.

**AIRPORT REMARKS:** Alert: Spl ATC rules part 93, and std VFR arr and dep

proc and pat info-see Reg Notice. Attended 1500-0630Z†. 100LL fuel

avbl summer 1430-0430Z†; winter 1530-0530Z† via 122.95 or PH:

907-531-9891. PPR for ldg durg unatndd hrs-FBO 907-531-9891

for arngmt and call out charge. Class I, ARFF Index B. Acr ops more

than 30 pax NA in excess of 15 min bfr or aft sked arr or dep wo PPR

with AMGR and cfrm ARFF svc avbl bfr ldg or tkof. USCG heli lctd at

N55°-21'-27.6" W131°-42'-19.8" invof Ketchikan Intl arpt and

Seaplane Base; MED-VAC missions only-POC Commander CG District

17, 709 W 9th St, RM 661. Box 25517 Juneau, AK 99802,

907-463-2247/2000. Trnn causes turb on arr and dep routes. Snow

and ice removal NA when arpt unatndd. Sfc cond reports reflect conditions while arpt attended only. Ctn air taxi and boat

tfc in harbor; floating debris psbl. Dock W of arpt clsd Nov 1-Apr 1; PPR ovngt-AMGR; Ferry btw arpt and city opr consly

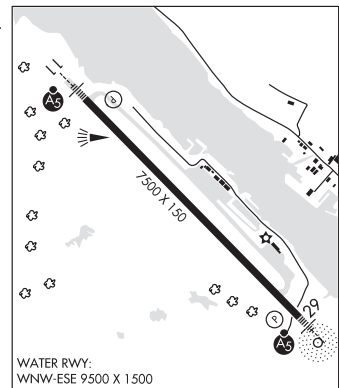
when arpt atndd. Birds on and invof arpt. Deer invof arpt. Prior to ops on apron/twy all acft ctc KTN FSS and adz intrs.

Rwy 11-29 sand used to enhance friction may not meet FAA specs. GA apron; Twy C; NE section of main apron PCN

21/F/B/X/T. Lndg fee for GA acft under 6000 lb and float plane use of spb float. Rwy 11 Rtg tfc: Wx prmtg for light

single/twim eng.

**AIRPORT MANAGER:** 907-225-6800



CONTINUED ON NEXT PAGE

## CONTINUED FROM PRECEDING PAGE

WEATHER DATA SOURCES: ASOS 134.45 (907) 247-8801. (WX CAM)

COMMUNICATIONS: CTAF 123.6 AFIS 134.45 (1515-0615Z); OT ctc Juneau FSS)

FSS (KETCHIKAN RCO) 1515-0615Z; OT ctc Juneau FSS.

KETCHIKAN RADIO 121.5 122.2 123.6 243.0 (LAA 123.6)

ANCHORAGE CENTER APP/DEP CON 118.5 284.6

AIRSPACE: CLASS E svc continuous.

RADIO AIDS TO NAVIGATION: NOTAM FILE KTN.

CLAM COVE NDB (HW) 396 CMJ N55°20.53' W131°41.45' 295° 1.0 NM to fld. 46/21E.

NDB unusable:

Byd 15 NM

ILS/DME 109.3 I-ECH Chan 30 Rwy 11. Class IT. DME unusable byd 25° left of course, byd 15° right of course.

LOC unusable beyond 15° right of rcl. LOC unusable beyond 25° left of rcl.

COMM/NAV/WEATHER REMARKS: For a LC to Ketchikan FSS dial 225-9481. For a LC to Juneau FSS dial 789-7380. AFIS operd by KTN FSS when open, OT Juneau FSS.

WATERWAY WNW-ESE: 9500X1500 (WATER)

**MURPHYS PULLOUT SPB** (8K9) 5 NW UTC-9(-8DT) N55°23.38' W131°44.28'

KETCHIKAN

00 NOTAM FILE KTN

WATERWAY NE-SW: 10000X2000 (WATER)

SEAPLANE REMARKS: Unattended. No public float plane parking avbl. Auto dial phone for FSS ATIS Hospital USCG and spill response avbl.

AIRPORT MANAGER: 907-225-6800

COMMUNICATIONS: CTAF 123.6

COMM/NAV/WEATHER REMARKS: LC to Ketchikan FSS dial 225-9481. For a LC to Juneau FSS dial 789-7380.

**PENINSULA POINT PULLOUT SPB** (9C0) 4 NW UTC-9(-8DT) N55°23.08' W131°44.30'

KETCHIKAN

00 NOTAM FILE KTN

WATERWAY NE-SW: 9000X2000 (WATER)

SERVICE: S4 FUEL 100LL

SEAPLANE REMARKS: Unattended. Landing and tkof of wheeled airplanes prohibited. TEMSCO Helicopter landing pads adj to basin, helicopters in vicinity at low altitudes. For fuel, maint and parking ctc 907-225-0337.

AIRPORT MANAGER: 907-225-2513

COMMUNICATIONS: CTAF 123.6

RADIO AIDS TO NAVIGATION: NOTAM FILE ANN.

ANNETTE ISLAND (H) (H) VOR/DME 117.1 ANN Chan 118

N55°03.62' W131°34.70' 323° 20.3 NM to fld. 184/21E.

VOR unusable:

000°-100° byd 11 NM blo 12,000'

000°-100° byd 15 NM

000°-100° byd 9 NM blo 6,500'

120°-130° byd 37 NM blo 6,000'

290°-320° byd 32 NM blo 7,000'

290°-320° byd 37 NM blo 9,000'

345°-000° byd 20 NM

DME unusable:

000°-100° byd 11 NM blo 12,000'

000°-100° byd 15 NM

000°-100° byd 9 NM blo 6,500'

120°-130° byd 37 NM blo 6,000'

290°-320° byd 32 NM blo 7,000'

290°-320° byd 37 NM blo 9,000'

345°-000° byd 20 NM

COMM/NAV/WEATHER REMARKS: LC to Ketchikan FSS dial 225-9481. For a LC to Juneau FSS dial 789-7380.

