

**BATTLE CREEK EXEC AT KELLOGG FLD** (BTL)(KBTL) P (ANG) 3 W UTC-5(-4DT) N42°18.39' W85°15.01'

**CHICAGO**  
H-5E, 10F, L-281  
IAP, AD

952 B LRA NOTAM FILE BTL

**RWY 05L-23R:** H10004X150 (ASPH-GRVD) S-100, D-200, 2S-175, 2D-400, 2D/2D2-900 PCN 27 F/B/X/T HIRL

**RWY 05L:** REIL. PAPI(P4L)—GA 3.0° TCH 48'. RVR-R 0.4% down.

**RWY 23R:** MALSR. PAPI(P4L)—GA 3.0° TCH 49'. RVR-T Pole.

**RWY 13-31:** H4835X100 (ASPH-GRVD) S-40, D-65, 2S-82, 2D-100 PCN 15 F/C/X/T MIRL

**RWY 13:** REIL. PAPI(P4L)—GA 3.0° TCH 42'. Railroad.

**RWY 31:** REIL. PAPI(P4L)—GA 3.0° TCH 25'. Road.

**RWY 05R-23L:** H4100X75 (ASPH) S-12.5 PCN 13 F/C/X/T MIRL

**RWY 05R:** REIL. PAPI(P4L)—GA 3.0° TCH 25'.

**RWY 23L:** REIL. PAPI(P4L)—GA 3.0° TCH 30'.

**LAND AND HOLD—SHORT OPERATIONS**

LDG RWY	HOLD—SHORT POINT	AVBL LDG DIST
RWY 05L	13-31	7000

**RUNWAY DECLARED DISTANCE INFORMATION**

**RWY 05L:** TORA-10004 TODA-10004 ASDA-10004 LDA-10004

**RWY 05R:** TORA-4100 TODA-4100 ASDA-4100 LDA-4100

**RWY 13:** TORA-4835 TODA-4835 ASDA-4835 LDA-4835

**RWY 23L:** TORA-4100 TODA-4100 ASDA-4100 LDA-4100

**RWY 23R:** TORA-10004 TODA-10004 ASDA-10004 LDA-10004

**RWY 31:** TORA-4835 TODA-4835 ASDA-4835 LDA-4835

**SERVICE:** S4 FUEL 100LL, JET A+ **OX 3 LGT** When ATCT clsd actvt MALSR Rwy 23R; REIL Rwy 05L, 05R, 23L, 13, & 31; PAPI Rwy 05L, 23R, 05R, 23L, 13, & 31; HIRL Rwy 05L-23R; MIRL Rwy 05R-23L & 13-31—CTAF.

**MILITARY—** FUEL J8(Mil); (C269-969-8400) (NC-100LL)

**NOISE:** Voluntary noise abatement procs in effect.

**AIRPORT REMARKS:** Attended continuously. Deer and birds on and in/ov arpt. Extsv pilot trg wi 25 NM of BTL. Arpt FICON mntd wkdays 1200-2030Z†; not mntd all otr times. Twy F rstrd to DOD/Mil use only. 24 hrs pn for cust, call 269-965-3349. Rwy 05R and Rwy 23R right tfc when twr clsd. Snow removal ops inpr dur winter months; eqpt ops mnt CTAF when twr clsd. Mowing ops inpr Mar-Oct. Landing fee. NOTE: See Special Notices—Aerobatic Practice Area.

**MILITARY REMARKS:** ANG BASH levels as defined in AFI 91-202. Aprn/twy usbl only O/R, OTRW clsd—coord with 110th Wing Safety at C269-969-3438.

**AIRPORT MANAGER:** 269-966-3470

**WEATHER DATA SOURCES:** ASOS (269) 964-0283 ASOS freq u/s indef. LAWRS.

**COMMUNICATIONS:** CTAF 126.825 ATIS 128.325 UNICOM 122.95

BATTLE CREEK RCO 122.2 (LANSING RADIO)

Ⓡ GREAT LAKES APP/DEP CON 119.2 (1030-0500Z†)

Ⓡ CHICAGO CENTER APP/DEP CON 127.55 (0500-1030Z†)

BATTLE CREEK TOWER 126.825 (1200-0400Z†) GND CON 121.7

**CLEARANCE DELIVERY PHONE:** For CD when ATCT clsd ctc Great Lakes Apch at 269-459-3344, when Apch clsd ctc Chicago ARTCC at 630-906-8921.

**AIRSPACE:** CLASS D svc 1200-0400Z†; other times CLASS G.

**RADIO AIDS TO NAVIGATION:** NOTAM FILE GRR.

**VICTORY (H) (H) VORV/DME** 115.95 VIO Chan 106(Y) N42°47.20' W85°29.82' 163° 30.8 NM to fld. 802/4W. DME unmonitored.

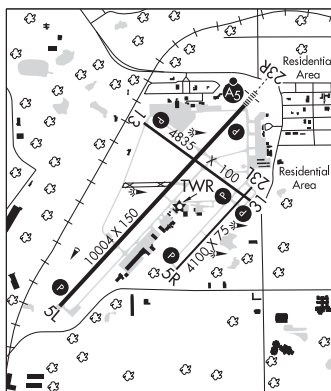
DME unusable:

011°-314° byd 30 NM blo 3,000'

**BATOL NDB (MHW/LOM)** 272 BT N42°21.72' W85°11.06' 225° 4.4 NM to fld. 891/4W. NOTAM FILE BTL.

**ILS** 110.5 I-BTL Rwy 23R. Class IB. LOM BATOL NDB. LOC and glideslope unmonitored when ATCT clsd.

**ASR** (1100-0400Z†)



**BAUER FLD** (See REESE on page 234)