

**DETROIT/GROSSE ILE**

**GROSSE ILE MUNI** (ONZ)(KONZ) 2 S UTC-5(-4DT) N42°05.94' W83°09.69'

**DETROIT  
COPTER  
L-281, A**

591 B NOTAM FILE ONZ  
**RWY 04-22:** H4846X100 (ASPH) S-66, D-83, 2D-105 MIRL  
 0.3% up NE

**RWY 04:** REIL. PAPI(P4L)—GA 3.04° TCH 40'. Tree. Rgt tfc.  
**RWY 22:** REIL. PAPI(P4L)—GA 3.04° TCH 40'. Thld dsplcd 428'.  
 Trees.

**RWY 17-35:** H4424X75 (CONC) S-40, D-55, 2D-90 MIRL  
**RWY 17:** PAPI(P4L)—GA 3.0° TCH 26'. Thld dsplcd 672'. Trees.  
**RWY 35:** PAPI(P4L)—GA 3.0° TCH 20'. Rgt tfc.

**SERVICE:** S4 FUEL 100LL, JET A LGT Actvt REIL Rwy 04 & 22; PAPI  
 Rwy 04, 22, 17, & 35; MIRL Rwy 04-22 & 17-35—CTAF.

**AIRPORT REMARKS:** Attended Mon-Fri 1300-2300Z†, Sat-Sat prior  
 arngmt. Birds and deer on and invof arpt. Ultralight & pwrd prcht act  
 invof arpt. Arpt clsd to acr ops gtr than 30 pax seats exc PPR call  
 amgr. Rwy 17-35 extsv peeling & cracking—FOD hazard.

**AIRPORT MANAGER:** 734-675-0155

**WEATHER DATA SOURCES:** AWOS-3 119.675 (734) 692-9686.

**COMMUNICATIONS:** CTAF/UNICOM 123.0

CARLETON RCO 122.1R 115.7T (LANSING RADIO)

Ⓡ **DETROIT APP/DEP CON** 134.3

**CLEARANCE DELIVERY PHONE:** For CD ctc Detroit Apch at 734-955-1404.

**RADIO AIDS TO NAVIGATION:** NOTAM FILE LAN.

**CARLETON (VH) (DH) VOR/DME** 115.7 CRL Chan 104 N42°02.88' W83°27.45' 080° 13.6 NM to fld. 628/3W.

VOR unusable:

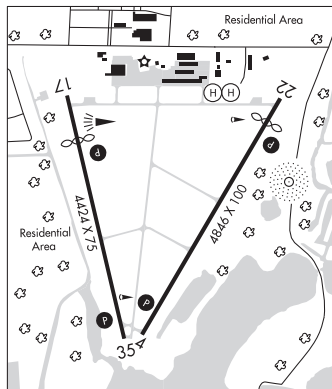
- 000°-019° blo 5,000'
- 020°-025° byd 40 NM
- 020°-030° byd 13 NM blo 5,000'
- 031°-040° blo 5,000'
- 041°-050° byd 25 NM blo 8,000'
- 041°-055° byd 65 NM
- 056°-083° byd 40 NM
- 084°-104° byd 40 NM blo 18,000'
- 105°-246° byd 40 NM
- 247°-283° byd 60 NM blo 12,500'
- 255°-335° byd 30 NM blo 8,000'
- 284°-294° byd 40 NM
- 295°-305° byd 40 NM blo 18,000'
- 306°-359° byd 40 NM

**NDB (MHW)** 419 RYS N42°06.07' W83°09.18' at fld. 576/7W. NOTAM FILE ONZ.

**COMM/NAV/WEATHER REMARKS:** For CD ctc Detroit Apch at 734-955-1404.

• • • • •  
**HELIPAD H1:** H25X25 (CONC)

**HELIPAD H2:** H25X25 (CONC)



**DEXTER**

**CACKLEBERRY** (2E8) 5 N UTC-5(-4DT) N42°25.51' W83°52.11'

**DETROIT  
COPTER**

898 NOTAM FILE LAN  
**RWY 06-24:** 2113X100 (TURF) 0.6% up NE

**RWY 06:** Thld dsplcd 515'. Trees.  
**RWY 24:** Thld dsplcd 500'. Tree.

**AIRPORT REMARKS:** Unattended. Birds and deer invof rwy. Rwy 06-24 CLOSED when snow covd. For rwy conds call amgr. Rwy  
 24 3' yellow cones dthr mkd with 3' wide gnd lvl conc stones. 75' trees in pri sfc, SE edge of rwy, may obst line of sight  
 to Rwy 24 dthr.

**AIRPORT MANAGER:** 734-424-3437

**COMMUNICATIONS:** CTAF 122.9

**CLEARANCE DELIVERY PHONE:** For CD ctc Detroit Apch at 734-955-1404.