

SPRINGFIELD/BECKLEY MUNI (SGH)(KSGH) P (ANG) 5 S UTC-5(-4DT) N39°50.42' W83°50.41' CINCINNATI
 1051 B TPA—See Remarks NOTAM FILE SGH H-10G, L-27E
 RWY 06-24: H9010X150 (ASPH-CONC-GRVD) S-66, D-175, 2D-330 IAP, DIAP, AD
 PCN 60 R/B/W/T HIRL

RWY 06: REIL. PAPI(P4L)—GA 3.0° TCH 45'.
 RWY 24: SSALR. PAPI(P4L)—GA 3.0° TCH 60'. Tree.
 RWY 15-33: H5498X100 (ASPH) S-35, D-50 MIRL
 RWY 15: REIL. PAPI(P4L)—GA 3.0° TCH 36'. Crops.
 RWY 33: REIL. PAPI(P4L)—GA 3.0° TCH 37'. Trees.

RUNWAY DECLARED DISTANCE INFORMATION

RWY 06: TORA-9009 TODA-9009 ASDA-9009 LDA-9009
 RWY 15: TORA-5499 TODA-5499 ASDA-5499 LDA-5499
 RWY 24: TORA-9009 TODA-9009 ASDA-9009 LDA-9009
 RWY 33: TORA-5499 TODA-5499 ASDA-5499 LDA-5499

SERVICE: S4 FUEL 100LL, JET A, A+ OX 1, 4 LGT ACTVT wind cone;
 SSALR Rwy 24; REIL Rwy 06, 15 & 33; HIRL Rwy 06-24; MIRL Rwy
 15-33—CTAF. PAPI Rwy 06, 24, 15, & 33 opr consly. Rwy 15 PAPI
 unusbl byd 9 degs right of cntrln. Rwy 24 ALS unmon indefly.

NOISE: Noise abatement: Avoid overflying Yellow Springs 2 NM SW blw
 4000 ft.

AIRPORT REMARKS: Attended Mon-Fri 1230-2300Z†, Sat-Sun
 1400-2200Z†. Ocnl deer, birds and otr wildlife on and invof arpt. Hvy
 bird activity drg fall and winter months. FBO svcs avbl on freq 120.7. Rwy 24 is pref wind rwy 10 kt or less. Avoid
 overflying ANG ramp. Rwy 06-24 980' concrete NE end, 1200' concrete SW end. TPA—2100 (1049), ohd TPA 2600
 (1549).

AIRPORT MANAGER: 937-325-6108

WEATHER DATA SOURCES: AWOS-3PT 134.975 (937) 324-4532.

COMMUNICATIONS: CTAF/UNICOM 122.95

Ⓡ COLUMBUS APP/DEP CON 118.85 269.275

CLEARANCE DELIVERY PHONE: For CD ctc Columbus Apch at 614-338-8537.

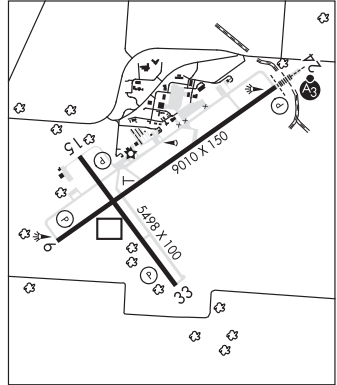
RADIO AIDS TO NAVIGATION: NOTAM FILE DAY.

(T) TACAN Chan 65 XSF (133.8) N39°50.29' W83°50.44' at fld. 1052/4W. unmonitored when twr clsd. No
 NOTAM MP: 1330-1530Z† Thu.

TACAN AZ unusable:
 090°-115° byd 15 NM

(T) DME 113.2 SGH Chan 79 N39°50.19' W83°50.70' at fld. 1046. NOTAM FILE SGH.

DME unusable:
 150°-160° byd 14 NM blo 5,000'



STARK CO SHERIFF HELIPORT (See CANTON on page 266)

STEUBENVILLE

GEARY A BATES/JEFFERSON CO AIRPARK (2G2) 4 W UTC-5(-4DT) N40°21.64' W80°42.10' DETROIT
 1198 B NOTAM FILE 2G2 L-29B
 RWY 14-32: H5001X75 (ASPH) S-31, D-42.5 PCN 12 F/D/X/T MIRL IAP
 RWY 14: REIL.

RWY 32: REIL. PAPI(P4L)—GA 3.6° TCH 41'. Trees.
 SERVICE: S2 FUEL 100LL, JET A, A+ LGT Actvt REIL Rwy 14 & 32;
 MIRL Rwy 14-32—CTAF. PAPI Rwy 32 opr consly.

AIRPORT REMARKS: Attended 1400-2200Z†. Unattended major hols. Ocnl
 deer, birds, & otr wildlife on & invof arpt. Jet A & 100LL avbl H24 with
 credit card. Tnst hangar storage PPR. Rwy 14 markings faded.

AIRPORT MANAGER: 740-264-5388

WEATHER DATA SOURCES: AWOS-3 121.625 (740) 275-4862.

COMMUNICATIONS: CTAF/UNICOM 122.8

Ⓡ PITTSBURGH APP/DEP CON 124.75

CLEARANCE DELIVERY PHONE: For CD ctc Pittsburgh Apch at 412-472-5591.

RADIO AIDS TO NAVIGATION: NOTAM FILE HLG.

WHEELING (L) (L) VOR/DME 114.25 HLG Chan 89(Y)
 N40°15.59' W80°34.12' 322° 8.6 NM to fld. 1269/7W.

VOR unusable:
 005°-045°
 105°-190° byd 7 NM
 315°-320° blo 3,000'

