

**BRADFORD** N41°09.58' W89°35.27' NOTAM FILE IKK.  
**(H) (H) VORTACW** 114.7 BDF Chan 94 133° 12.5 NM to Marshall Co. 810/OE.  
 VOR portion unusable:  
 189°-199° blo 3,500' btn 25 and 35 NM  
**RCO** 122.4 (KANKAKEE RADIO)

**CHICAGO**  
 H-5D, L-27C

**BRESSON** (See COMPTON on page 53)

**BULT FLD** (See MONEE on page 72)

**CABBI** N37°52.21' W89°14.73' NOTAM FILE MDH.  
**NDB (LOMW)** 388 MD 184° 5.5 NM to Southern Illinois. 409/1W. NDB unmonitored when ATCT clsd.

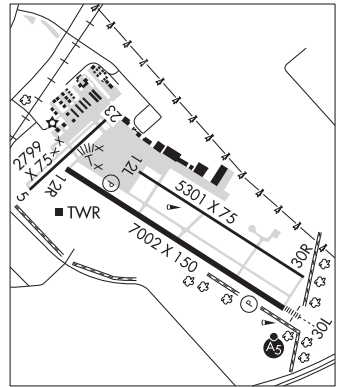
**ST LOUIS**

**CAHOKIA/ST LOUIS**

**ST LOUIS DOWNTOWN** (CPS)(KCPS) 1 E UTC-6(-5DT) N38°34.22' W90°09.31'

**ST LOUIS**  
 H-5D, L-27C, A  
 IAP, AD

413 B ARFF Index—See Remarks NOTAM FILE CPS  
**RWY 12R-30L:** H7002X150 (ASPH-GRVD) S-65, D-95, 2S-160,  
 2D-175 PCN 48 F/D/X/T HIRL  
**RWY 12R:** REIL. PAPI(P4L)—GA 3.0° TCH 49'. Tree. Rgt tfc.  
**RWY 30L:** MALSR. PAPI(P4L)—GA 3.0° TCH 53'. Pole.  
**RWY 12L-30R:** H5301X75 (CONC) S-30, D-30 PCN 10 F/D/X/T MIRL  
**RWY 12L:** REIL. Tree.  
**RWY 30R:** REIL. Tree. Rgt tfc.  
**RWY 05-23:** H2799X75 (ASPH) S-12 PCN 11 R/C/W/T MIRL  
**RWY 05:** Tree.  
**RWY 23:** Tower.



**RUNWAY DECLARED DISTANCE INFORMATION**

**RWY 05:** TORA-2799 TODA-2799 ASDA-2799 LDA-2799  
**RWY 12L:** TORA-5300 TODA-5300 ASDA-5300 LDA-5300  
**RWY 12R:** TORA-7002 TODA-7002 ASDA-7002 LDA-7002  
**RWY 23:** TORA-2799 TODA-2799 ASDA-2799 LDA-2799  
**RWY 30L:** TORA-7002 TODA-7002 ASDA-7002 LDA-7002  
**RWY 30R:** TORA-5300 TODA-5300 ASDA-5300 LDA-5300

**SERVICE:** S4 FUEL 100LL, JET A OX1 LGT ACTIVATE MALSR Rwy 30L when twr clsd—CTAF. REIL Rwy 30R—CTAF. HIRL Rwy 12R-30L preset on med ints when twr clsd. MIRL Rwy 12L-30R not avbl when twr clsd.

**AIRPORT REMARKS:** Attended continuously. Migratory waterfowl on and invof arpt. Be alert: intensive student training and helicopter operations. Sfc conds not mntd 0300-1300Z†. Rwy 12R-30L 2D-200 with PPR. Class IV, ARFF Index A. Clsd to sked acr ops grt than 9 psgr seats. Unsked acr ops grt than 30 psgr seats rqr 12 hr PPR. Mon-Sun (1300-0300Z†) other times by req 618-337-6060. After hrs ctc 618-646-8263. Rwy 05-23 not avbl for unscheduled acr at least 31 pasgr seats excp taxi. Rwy 12L-30R not avbl for unscheduled acr at least 31 pasgr seats excp taxi. All twys excp Twy B4 PPR acft over 120,000 lbs. Rwy 05 and 23 sfc markings faded.

**AIRPORT MANAGER:** 618-337-6060

**WEATHER DATA SOURCES:** ASOS (618) 332-0001 LAWRS.

**COMMUNICATIONS:** CTAF 119.925 ATIS 121.45 UNICOM 122.95

Ⓡ **SAINT LOUIS APP/DEP CON** 123.7

**DOWNTOWN TOWER** 119.925 (1230-0400Z†) **GND CON** 121.8 **CLNC DEL** 118.275 (121.8 when twr clsd)

**AIRSPACE:** CLASS D svc 1230-0400Z†; other times CLASS G.

**RADIO AIDS TO NAVIGATION:** NOTAM FILE STL.

**TROY (L) (L) VORTACW** 116.0 TOY Chan 107 N38°44.35' W89°55.12' 224° 15.0 NM to fld. 576/4E.

TACAN AZIMUTH unusable:  
 255°-270°  
 300°-310°

**ACORE NDB (LOMW)** 350 CP N38°31.19' W90°03.56' 304° 5.4 NM to fld. 550/OE. NOTAM FILE CPS.

**ILS** 109.1 I-CPS Rwy 30L. Class IA. LOM ACORE NDB. LOC unmonitored when ATCT closed. LOC unusable byd 14° rgt of course. OM unmonitored when ATCT closed.

**COMM/NAV/WEATHER REMARKS:** Emerg frequency 121.5 not avbl at twr.