

**MAPLE LAKE MUNI—BILL MAVENCAMP SR FLD** (MGG)(KMG) 1 NE UTC-6(-5DT) N45°14.16' W93°59.14' **TWIN CITIES**  
 1028 B NOTAM FILE MGG L-14H, A  
 IAP, AD

W93°59.14'  
 1028 B NOTAM FILE MGG

**RWY 10-28:** H2796X60 (ASPH) LIRL(NSTD)

**RWY 10:** Thld dspcd 100'. P-line.

**RWY 28:** Trees.

**SERVICE:** FUEL 100LL LGT Rwy 10-28 nstd LIRL due to 400' spacing btn lgts, 20' fm edge.

**AIRPORT REMARKS:** Unattended. Migratory waterfowl on and invof arpt. Fuel avbl H24 with credit card. One tkof/lgd per flt oprn, no tgl or trg.

**AIRPORT MANAGER:** 320-963-3738

**WEATHER DATA SOURCES:** AWOS-3 128.325 (320) 963-3300.

**COMMUNICATIONS:** CTAF/UNICOM 122.8

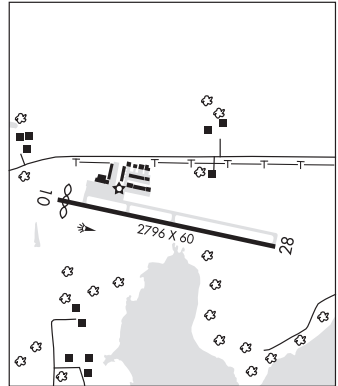
Ⓡ **MINNEAPOLIS APP/DEP CON** 126.5

**CLEARANCE DELIVERY PHONE:** For CD etc Minneapolis Apch at 612-726-9086.

**RADIO AIDS TO NAVIGATION:** NOTAM FILE PNM.

**DARWIN (L) DME** 109.0 DWN Chan 27 N45°05.25'

W94°27.23' 066° 21.8 NM to fld. 1130.



## MARSHALL

**SOUTHWEST MINNESOTA RGNL MARSHALL/RYAN FLD** (MML)(KMML) 1 W UTC-6(-5DT) **OMAHA**  
 N44°27.10' W95°49.47' H-21, L-121  
 1183 B NOTAM FILE MML IAP

**RWY 12-30:** H7221X100 (ASPH) S-72, D-105 PCN 27 F/B/X/T HIRL

**RWY 12:** MALSR. PAPI(P4L)—GA 3.0° TCH 50'.

**RWY 30:** MALSF. PAPI(P4L)—GA 3.0° TCH 32'.

**RWY 02-20:** H3999X75 (ASPH) MIRL

**RWY 02:** REIL. PAPI(P4L)—GA 3.0° TCH 32'.

**RWY 20:** REIL. PAPI(P4L)—GA 3.0° TCH 57'.

**SERVICE:** S4 FUEL 100LL, JET A LGT ACTIVATE MALSR Rwy 12; MALSF Rwy 30; REIL Rwy 02 & 20; PAPI Rwy 12, 30, 02, & 20; HIRL Rwy 12-30; MIRL Rwy 02-20—CTAF.

**AIRPORT REMARKS:** Attended Mon-Thu 1400-2300Z±. For svc after hrs call 507-532-3164. Self svc fuel avbl 24 hrs with credit card.

**AIRPORT MANAGER:** 507-537-6051

**WEATHER DATA SOURCES:** AWOS-3PT 120.150 (507) 532-5269.

**COMMUNICATIONS:** CTAF/UNICOM 122.8

**MARSHALL RCO** 122.5 (PRINCETON RADIO)

**MINNEAPOLIS CENTER APP/DEP CON** 127.1

**GCO** 121.725 (MINNEAPOLIS CENTER and FLIGHT SERVICES)

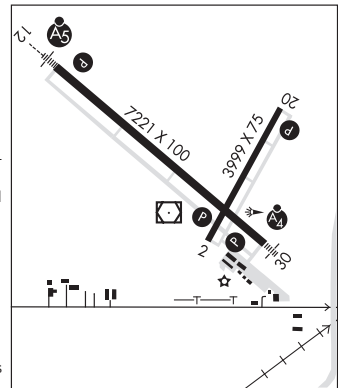
**CLEARANCE DELIVERY PHONE:** For CD if una to ctc on FSS freq, ctc Minneapolis ARTCC at 651-463-5588.

**RADIO AIDS TO NAVIGATION:** NOTAM FILE MML.

**MARSHALL (T) (T) VORW/DME** 111.0 MML Chan 47 N44°26.90' W95°49.49' at fld. 1180/5E. unmonitored.

**GARNO NDB (LOMW)** 253 GB N44°30.12' W95°54.66' 124° 4.8 NM to fld. 1178/5E.

**ILS** 109.7 I-GBY Rwy 12. LOM GARNO NDB. Unmonitored.



**MARSHALL** N44°26.90' W95°49.49' NOTAM FILE MML. **OMAHA**  
 (T) (T) VORW/DME 111.0 MML Chan 47 at Southwest Minnesota Rgnl Marshall/Ryan Fld. 1180/5E. unmonitored. L-121  
 RCO 122.5 (PRINCETON RADIO)