

LOUP CITY MUNI (ØF4) 1 NW UTC-6(-5DT) N41°17.18' W98°59.40'

OMAHA
L-10H, 12H
IAP

2073 B NOTAM FILE OLU

RWY 16-34: H3900X60 (CONC) S-12.5 MIRL

RWY 16: PAPI(P2L)—GA 3.0° TCH 40'.

RWY 34: PAPI(P2L)—GA 3.0° TCH 40'. Tree.

RWY 04-22: 2021X100 (TURF)

RWY 04: Trees.

RWY 22: Tree.

SERVICE: FUEL 100LL LGT MIRL Rwy 16-34 low ints SS-SR; to incr ints—CTAF; PAPI Rwy 16 and Rwy 34—CTAF.

AIRPORT REMARKS: Unattended. For svc call 308-745-1244. 24 hr self svc credit card.

AIRPORT MANAGER: 308-390-1500

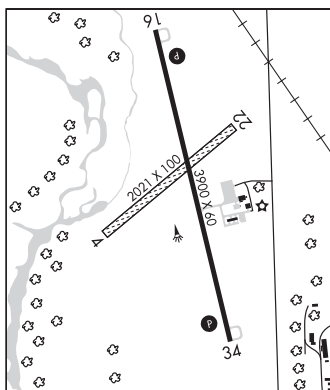
COMMUNICATIONS: CTAF 122.9

Ⓡ **MINNEAPOLIS CENTER APP/DEP CON** 126.05 278.8

CLEARANCE DELIVERY PHONE: For CD ctc Minneapolis ARTCC at 651-463-5588.

RADIO AIDS TO NAVIGATION: NOTAM FILE OLU.

WOLBACH (H) DME 112.0 OBH Chan 57 N41°22.54' W98°21.22' 260° 29.3 NM to fld. 2010.



MARTIN FLD (See SO SIOUX CITY on page 322)

MC COOK BEN NELSON RGNL (MCK)(KMCK) 2 E UTC-6(-5DT) N40°12.38' W100°35.53'

OMAHA
H-5B, L-10H
IAP, AD

2583 B Class IV, ARFF Index A NOTAM FILE MCK MON Airport

RWY 12-30: H6450X100 (CONC) S-30, D-38 MIRL 0.6% up NW

RWY 12: MALSR. PAPI(P4L)—GA 3.0° TCH 38'. Tree.

RWY 30: REIL. VASI(V4L)—GA 3.0° TCH 44'. Thld dsplcd 750'. Rgt tfc.

RWY 04-22: H4000X75 (CONC) S-30, D-38 PCN 34 R/C/W/T MIRL

RWY 04: VASI(V2L)—GA 3.0° TCH 26'. Pole. Rgt tfc.

RWY 22: VASI(V2L)—GA 3.0° TCH 26'.

RWY 17-35: 1330X160 (TURF)

RWY 35: Rgt tfc.

RUNWAY DECLARED DISTANCE INFORMATION

RWY 04: TORA-4000 TODA-4000 ASDA-4000 LDA-4000

RWY 12: TORA-6448 TODA-6448 ASDA-5698 LDA-5698

RWY 22: TORA-4000 TODA-4000 ASDA-4000 LDA-4000

RWY 30: TORA-6448 TODA-6448 ASDA-6448 LDA-5698

SERVICE: S4 FUEL 100LL, JET A LGT ACTVT MALSR Rwy 12; PAPI Rwy 12 and VASI Rwy 30—CTAF. Rwy 12 VASI unusable byd 5° right of centerline and 8° left of centerline.

AIRPORT REMARKS: Attended dalgt hrs. Parachute Jumping. Rwy 17-35 not avbl for sked acr opns with more than 9 psgr seats or unsked acr at least 31 psgr seats.

AIRPORT MANAGER: 308-345-2022

WEATHER DATA SOURCES: ASOS 119.025 (308) 345-1193.

COMMUNICATIONS: CTAF/UNICOM 122.8

RCO 122.6 (COLUMBUS RADIO)

Ⓡ **DENVER CENTER APP/DEP CON** 132.7

CLEARANCE DELIVERY PHONE: For CD ctc Denver ARTCC on freq. If una, ctc FSS on freq via rco. If una, ctc Denver ARTCC at 303-651-4257.

AIRSPACE: CLASS E.

RADIO AIDS TO NAVIGATION: NOTAM FILE MCK.

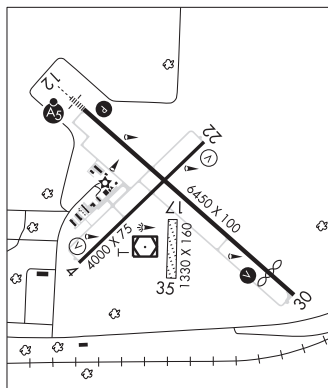
(VH) (DH) **VORV/DME** 115.3 MCK Chan 100 N40°12.23' W100°35.65' at fld. 2569/8E.

VOR unusable:

248°-263° byd 40 NM blo 7,000'

280°-295° byd 40 NM

ILS/DME 110.95 I-MCK Chan 46(Y) Rwy 12. Class IT.



MILLARD (See OMAHA on page 316)

MILLER FLD (See VALENTINE on page 324)