

SIoux FALLS

JOE FOSS FLD (FSD)(KFSD) P (ANG) 3 NW UTC-6(-5DT) N43°34.92' W96°44.52'

OMAHA  
H-5C, L-121  
IAP, AD

1430 B LRA Class I, ARFF Index B NOTAM FILE FSD MON Airport

RWY 03-21: H9000X150 (CONC-GRVD) S-200, D-200, 2S-175,  
2D-444 PCN 60 R/B/W/T HIRL CL

RWY 03: MALS. PAPI(P4L)—GA 3.0° TCH 54'. RVR-T Road.

RWY 21: MALS. TDZL. PAPI(P4L)—GA 3.0° TCH 49'. RVR-T  
Railroad.

RWY 15-33: H8000X150 (CONC-GRVD) S-100, D-180, 2S-175,  
2D-400 PCN 70 R/B/W/T HIRL

RWY 15: REIL. PAPI(P4L)—GA 3.0° TCH 48'. Tree.

RWY 33: REIL. PAPI(P4L)—GA 3.0° TCH 45'. Tree.

RWY 09-27: H3151X75 (CONC-WC) S-30 PCN 60 R/B/W/T MIRL

RWY 09: Tree.

RWY 27: Pole.

RUNWAY DECLARED DISTANCE INFORMATION

RWY 03: TORA-8999 TODA-8999 ASDA-8999 LDA-8999

RWY 15: TORA-8000 TODA-8000 ASDA-8000 LDA-8000

RWY 21: TORA-8999 TODA-8999 ASDA-8999 LDA-8999

RWY 33: TORA-8000 TODA-8000 ASDA-8000 LDA-8000

ARRRESTING GEAR/SYSTEM

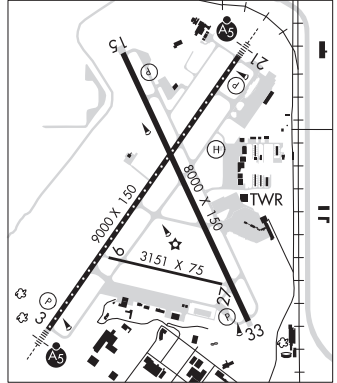
RWY 03 BAK-14 BAK-12(B) (1540).

BAK-14 BAK-12(B) (1500). RWY 21

RWY 15 BAK-14 BAK-12(B) (1550).

BAK-14 BAK-12(B) (1500). RWY 33

SERVICE: S4 FUEL 100LL, JET A OX 1, 3 LGT ACTVT MALS. RWY 03 and 21; REIL RWY 15 and 33; HIRL RWY 03-21 and 15-33; MIRL RWY 09-27. When ATCT clsd MALS. RWY 03 and 21 preset on low inst, to incr inst—CTAF. PAPI RWY 03, 21, 15, 33 opr consly. RWY 15 PAPI unusable byd 6° left and 5° right of rwy centerline. RWY 33 PAPI unusable byd 9° right of rwy centerline. MILITARY—A-GEAR RWY 15-33 and RWY 03-21 A-GEAR not nmly up, rqr 30 min PN, only avbl dur nml ANG duty hr (Oct-Apr). JASU 1(MD-3) 3(MA32A-60) FUEL A++ (Mil). For mil fuel, ctc ANG DSN 798-7754, C605-988-5754. A+(C605-336-7791)(NC-100LL, A) FLUID SP PRESAIR LPOX LOX OIL O-128 SOAP



AIRPORT REMARKS: Attended continuously. Waterfowl, birds and deer on and invof arpt. Migratory birds within 25 NM primarily between Mar-Nov. Sfc conds not monitored 0600-1030Z† (0000-0430 local). ATCT has limited visibility on Twy H, Twy G and Twy J between the east cargo ramp and Twy B. Twy C clsd except mil acft. East general aviation ramp restricted to 60,000 pounds. RWY 09-27 not avbl for skedd acr ops with more than 9 psgr seats or unskedd acr at least 31 psgr seats except for taxi. BE ALERT: Marv Skie-Lincoln County airport (Y14) located 7.2 miles sw of FSD and 2 miles east of Roky has heavy VFR traffic. Flight Notification Service (ADCUS) avbl Mon-Fri 1400-2200Z† call 605-338-4384, after hrs call 605-373-3523 prior to departure. Cold temperature airport. Altitude correction required at or below -31C.

MILITARY REMARKS: ANG Numerous NSTD mkr on the ANG prk apron. Comsec storage unavbl. BASH Phase II Ops eff Mar-Apr, Sep-Oct; exp incr bird act; ctc ANG Base Ops.

AIRPORT MANAGER: 605-336-0762

WEATHER DATA SOURCES: ASOS (605) 331-7833 LLWAS.

COMMUNICATIONS: CTAF 118.3 ATIS 126.6 UNICOM 122.95

SIoux FALLS RCO 122.2 (HURON RADIO)

Ⓡ SIoux FALLS APP/DEP CON 125.8 (1100-0600Z†)

Ⓡ MINNEAPOLIS CENTER APP/DEP CON 132.050 (0600-1100Z†)

SIoux FALLS TOWER 118.3 (1100-0600Z†) GND CON 121.9

CLEARANCE DELIVERY PHONE: For CD when ATCT clsd, ctc FSS. If una, ctc Minneapolis ARTCC at 651-463-5588.

AIRSPACE: CLASS D svc 1100-0600Z†; other times CLASS E.

RADIO AIDS TO NAVIGATION: NOTAM FILE FSD.

SIoux FALLS (VH) (H) VORTAC 115.0 FSD Chan 97 N43°38.97' W96°46.87' 148° 4.4 NM to fld. 1571/9E.

VOR unusable:

160°-170° blo 4,000'

160°-170° byd 12 NM

320°-000° byd 20 NM blo 4,000'

330°-345° byd 10 NM blo 8,000'

330°-345° byd 25 NM blo 12,000'

335°-350° byd 46 NM

ROK. NDB (HW/LOM) 245 FS N43°29.64' W96°49.74' 031° 6.5 NM to fld. 1528/5E.

ILS 109.9 I-FSD RWY 03. Class IT. LOM ROK. NDB. COMLO unmonitored. LOC unusable byd 30° left of course.

LOC and glideslope unmonitored when ATCT clsd.

ILS 111.1 I-JOU RWY 21. Class IT. Unmonitored when ATCT closed.

ASR (1100-0500Z†)

• • • • •  
HELIPAD H1: H50X50 (ASPH) PERIMETER LGTS

HELIPORT REMARKS: Perimeter lgts.