

## ELKTON

**CLAREMONT** (58M) 3 SW UTC-5(-4DT) N39°34.45' W75°52.19'

106 B NOTAM FILE DCA

**RWY 13-31:** H2989X70 (ASPH-AFSC) MIRL 1.5% up NW

**RWY 13:** REIL. PAPI(P2R)—GA 5.0° TCH 6'. Thld dsplcd 288'. Trees.

**RWY 31:** REIL. PAPI(P2L)—GA 4.0° TCH 6'. Thld dsplcd 601'. Trees.

**SERVICE:** S2 **FUEL** 100LL **LGT** Actvt rotg bcn—123.0. Actvt REIL Rwy 13 & 31; PAPI Rwy 13 & Rwy 31; MIRL Rwy 13-31—123.0.

**AIRPORT REMARKS:** Attended 1400-2100Z. Deer and birds on and invof arpt. Reduced braking action Rwy 13 downhill 1.5 deg. Calm/light wind use Rwy 31. Fuel: 100LL self serve. Rwy 13-31 no TGL. Rwy 13-31 unfilled cracks, alligator cracking, lateral and longl cracking, veg growth, oxidation. Rwy 13 and 31 markings faded.

**AIRPORT MANAGER:** (410) 398-0234

**COMMUNICATIONS:** CTAF/UNICOM 122.8

® PHILADELPHIA APP/DEP CON 118.35

**CLEARANCE DELIVERY PHONE:** For CD ctc Philadelphia Apch at (800) 354-9884.

**RADIO AIDS TO NAVIGATION:** NOTAM FILE MIV.

**SMYRNA (L) (L) VORTACW** 111.4 ENO Chan 51 N39°13.90'

W75°30.96' 330° 26.3 NM to fld. 15/9W.

TACAN AZIMUTH unusable:

140°-150° byd 36 NM blo 2,000'

200°-300° byd 36 NM blo 3,000'

VOR unusable:

159°-169° blo 3,000 . 325-335 byd 15NM blo 4,900'

DME unusable:

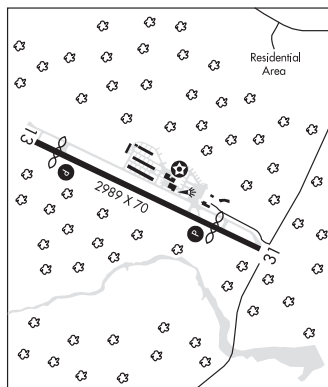
140°-150° byd 36 NM blo 2,000'

200°-300° byd 36 NM blo 3,000'

WASHINGTON

L-34G, A

IAP



**ELLICOTT** N39°17.24' W76°46.62' NOTAM FILE BWI.

**NDB (MHW)** 371 **FND** 154° 8.4 NM to Baltimore/Washington Intl Thurgood Marshall. 381/11W.

NDB unusable:

140°-320° byd 12 NM blo 10,500'

WASHINGTON

COPTER

L-29E, 34F, 36I, A

**ESSEX SKYPARK** (See BALTIMORE on page 93)

**FALLSTON** (W42) 1 S UTC-5(-4DT) N39°30.08' W76°24.68'

460 NOTAM FILE DCA

**RWY 04-22:** H2200X50 (ASPH) S-12 LIRL(NSTD)

**RWY 04:** Thld dsplcd 315'. Trees.

**RWY 22:** Thld dsplcd 230'. Trees.

**SERVICE:** **FUEL** 100LL **LGT** For NSTD LIRL Rwy 04-22 ctc arpt manager 410-877-9889.

**AIRPORT REMARKS:** Unattended. Arpt CLOSED dusk-1400Z. If attendant not present during dalyt hrs call 410-877-9889.

For fuel, if no one present during dalgt hrs call 410-877-9889. Arpt unattended major holidays. Deer and wildlife on and invof arpt. Rwy 04-22 NSTD LIRL only one thld lgt each side. NSTD LIRL avbl to based acft with prior notice.

**AIRPORT MANAGER:** 410-877-9889

**COMMUNICATIONS:** CTAF 122.9

**CLEARANCE DELIVERY PHONE:** For CD ctc Potomac Apch at 866-429-5882.

WASHINGTON

COPTER

## FORT MEADE (ODENTON)

**TIPTON** (FME)(KFME) 1 SW UTC-5(-4DT) N39°05.12' W76°45.56'

150 B TPA-1000(850) NOTAM FILE FME

**RWY 10-28:** H3000X75 (ASPH) MIRL 1.2% up E

**RWY 10:** REIL. PAPI(P2L)—GA 4.0° TCH 51'. Trees. Rgt tfc.

**RWY 28:** REIL. PAPI(P2L)—GA 4.0° TCH 57'. Trees.

**SERVICE:** S2 **FUEL** 100LL, JET A+ **LGT** Actvt REIL Rwy 10 and 28; PAPI Rwy 10 and 28; MIRL Rwy 10-28—CTAF. Rwy 10-28 REIL; MIRL on photocell during dalgt hrs. Rwy 10 PAPI unusbl byd 8 degs left and right of crs. Rwy 28 PAPI unusbl byd 5 degs left of crs (trees), and 8 degs right of crs.

**AIRPORT REMARKS:** Attended 1330-2300Z. Deer on rwy and twys. PAEW adj all twys and Rwy 10-28 indefly. Be alert for nmrs BWI tbjt arr/dep in the area. Fly tfc pattern south of the field to avoid BWI Class B Asp. Remain clear of BWI Class B Asp until clnc is obtained.

**AIRPORT MANAGER:** 410-222-6815

WASHINGTON

COPTER

L-29E, 34F, 36I, A

IAP

CONTINUED ON NEXT PAGE

CONTINUED FROM PRECEDING PAGE

WEATHER DATA SOURCES: AWOS-3 123.925.

COMMUNICATIONS: CTAF/UNICOM 123.05

Ⓡ POTOMAC APP/DEP CON 119.7

CLEARANCE DELIVERY PHONE: For CD ctc Potomac Apch at 866-429-5882.

RADIO AIDS TO NAVIGATION: NOTAM FILE BWI.

BALTIMORE (L) (L) VORTACW 115.1 BAL Chan 98 N39°10.26' W76°39.68' 233° 6.9 NM to fld. 150/11W.

DME unusable:

133°-155° byd 20 NM blo 10,000'

133°-155° byd 36 NM

300°-349° byd 35 NM

VOR unusable:

133°-155° byd 20 NM blo 10,000'

197°-217° byd 17 NM

260°-281° byd 15 NM

282°-292°

TACAN AZIMUTH unusable:

029°-042° byd 30 NM

133°-155° byd 20 NM blo 10,000'

180°-190° byd 17 NM

300°-349° byd 35 NM

**FREDERICK MUNI** (FDK)(KFDK) 0 E UTC-5(-4DT) N39°25.02' W77°22.48'

WASHINGTON

309 B TPA—See Remarks NOTAM FILE FDK MON Airport

H-10H, 12I, L-29E, 34F, A

RWY 05-23: H5819X100 (ASPH-GRVD) S-60 PCN 30 F/C/X/T

IAP, AD

HIRL 0.5% up SW

RWY 05: REIL. PAPI(P4L)—GA 3.0° TCH 43'. Trees. Rgt tfc.

RWY 23: ODALS. REIL. PAPI(P4L)—GA 3.0° TCH 54'. Trees.

RWY 12-30: H3599X75 (ASPH) MIRL 0.3% up NW

RWY 12: REIL. PAPI(P2L)—GA 3.0° TCH 40'. Trees. Rgt tfc.

RWY 30: REIL. PAPI(P2L)—GA 4.0° TCH 37'. Trees.

SERVICE: S4 FUEL 100LL, JET A OX 3, 4 LGT ACTVT ODALS Rwy

23; REIL Rwy 12, 23 and 30; PAPI Rwy 23; HIRL Rwy 05-23; MIRL

Rwy 12-30—CTAF.

AIRPORT REMARKS: Attended 1200-0200Z†. FBO unatnrd on Christmas

Day. Fuel self serve 100LL avbl H24 with credit card. Rwy 23 -15 ft

depression 400 ft long; 246 ft L of cntrln; parallel to apch end.

TPA—1100 (800) helicopters, 1300 (1000) single and lgt twins,

1800 (1500) large twins and jets.

AIRPORT MANAGER: 301-600-2201

WEATHER DATA SOURCES: AWOS-3 (301) 600-1457

COMMUNICATIONS: CTAF 132.4 ATIS 124.875 UNICOM 122.95

Ⓡ POTOMAC APP/DEP CON 126.1

TOWER 132.4 (1200-0200Z†) GND CON 127.425 CLNC DEL 127.425

126.9(When twr clsd)

CLEARANCE DELIVERY PHONE: For CD when twr clsd ctc Potomac Apch 126.9 or 866-709-4993.

AIRSPACE: CLASS D svc 1200-0200Z†; other times CLASS E.

RADIO AIDS TO NAVIGATION: NOTAM FILE DCA.

WESTMINSTER (VH) (H) VORTAC 117.9 EMI Chan 126 N39°29.70' W76°58.71' 264° 19.0 NM to fld. 820/8W.

VOR unusable:

009°-056° byd 40 NM

128°-161° byd 20 NM blo 6,500'

221°-231° blo 4,500'

221°-231° byd 13 NM blo 16,000'

284°-294° byd 40 NM

295°-334° blo 5,500'

TACAN AZIMUTH unusable:

281°-055° byd 35 NM blo 3,000'

DME unusable:

281°-055° byd 35 NM blo 3,000'

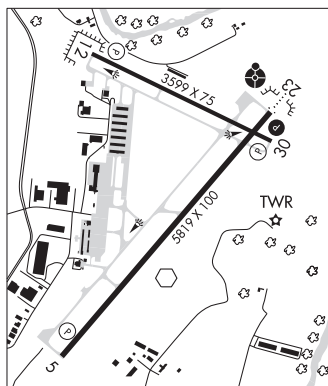
(T) VORW 109.0 FDK N39°24.73' W77°22.51' at fld. 303/8W. NOTAM FILE FDK.

VOR unusable:

150°-160° byd 10 NM blo 3,000'

180°-190°

ILS 110.3 I-FDK Rwy 23. Class IT.



**FREEWAY** (See BOWIE on page 95)