

CONTINUED FROM PRECEDING PAGE

WEATHER DATA SOURCES: AWOS-3 123.925.

COMMUNICATIONS: CTAF/UNICOM 123.05

Ⓡ POTOMAC APP/DEP CON 119.7

CLEARANCE DELIVERY PHONE: For CD ctc Potomac Apch at 866-429-5882.

RADIO AIDS TO NAVIGATION: NOTAM FILE BWI.

BALTIMORE (L) (L) VORTACW 115.1 BAL Chan 98 N39°10.26' W76°39.68' 233° 6.9 NM to fld. 150/11W.

DME unusable:

133°-155° byd 20 NM blo 10,000'

133°-155° byd 36 NM

300°-349° byd 35 NM

VOR unusable:

133°-155° byd 20 NM blo 10,000'

197°-217° byd 17 NM

260°-281° byd 15 NM

282°-292°

TACAN AZIMUTH unusable:

029°-042° byd 30 NM

133°-155° byd 20 NM blo 10,000'

180°-190° byd 17 NM

300°-349° byd 35 NM

**FREDERICK MUNI** (FDK)(KFDK) 0 E UTC-5(-4DT) N39°25.02' W77°22.48'

WASHINGTON

309 B TPA—See Remarks NOTAM FILE FDK MON Airport

H-10H, 12I, L-29E, 34F, A

RWY 05-23: H5819X100 (ASPH-GRVD) S-60 PCN 30 F/C/X/T

IAP, AD

HIRL 0.5% up SW

RWY 05: REIL. PAPI(P4L)—GA 3.0° TCH 43'. Trees. Rgt tfc.

RWY 23: ODALS. REIL. PAPI(P4L)—GA 3.0° TCH 54'. Trees.

RWY 12-30: H3599X75 (ASPH) MIRL 0.3% up NW

RWY 12: REIL. PAPI(P2L)—GA 3.0° TCH 40'. Trees. Rgt tfc.

RWY 30: REIL. PAPI(P2L)—GA 4.0° TCH 37'. Trees.

SERVICE: S4 FUEL 100LL, JET A OX 3, 4 LGT ACTVT ODALS Rwy

23; REIL Rwy 12, 23 and 30; PAPI Rwy 23; HIRL Rwy 05-23; MIRL

Rwy 12-30—CTAF.

AIRPORT REMARKS: Attended 1200-0200Z†. FBO unatnrd on Christmas

Day. Fuel self serve 100LL avbl H24 with credit card. Rwy 23 -15 ft

depression 400 ft long; 246 ft L of cntrln; parallel to apch end.

TPA-1100 (800) helicopters, 1300 (1000) single and lgt twins,

1800 (1500) large twins and jets.

AIRPORT MANAGER: 301-600-2201

WEATHER DATA SOURCES: AWOS-3 (301) 600-1457

COMMUNICATIONS: CTAF 132.4 ATIS 124.875 UNICOM 122.95

Ⓡ POTOMAC APP/DEP CON 126.1

TOWER 132.4 (1200-0200Z†) GND CON 127.425 CLNC DEL 127.425

126.9(When twr clsd)

CLEARANCE DELIVERY PHONE: For CD when twr clsd ctc Potomac Apch 126.9 or 866-709-4993.

AIRSPACE: CLASS D svc 1200-0200Z†; other times CLASS E.

RADIO AIDS TO NAVIGATION: NOTAM FILE DCA.

WESTMINSTER (VH) (H) VORTAC 117.9 EMI Chan 126 N39°29.70' W76°58.71' 264° 19.0 NM to fld. 820/8W.

VOR unusable:

009°-056° byd 40 NM

128°-161° byd 20 NM blo 6,500'

221°-231° blo 4,500'

221°-231° byd 13 NM blo 16,000'

284°-294° byd 40 NM

295°-334° blo 5,500'

TACAN AZIMUTH unusable:

281°-055° byd 35 NM blo 3,000'

DME unusable:

281°-055° byd 35 NM blo 3,000'

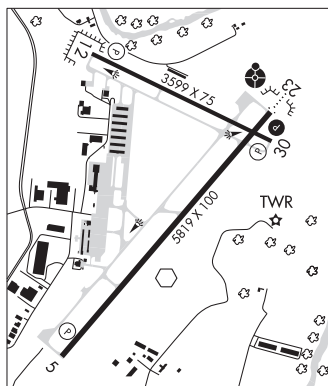
(T) VORW 109.0 FDK N39°24.73' W77°22.51' at fld. 303/8W. NOTAM FILE FDK.

VOR unusable:

150°-160° byd 10 NM blo 3,000'

180°-190°

ILS 110.3 I-FDK Rwy 23. Class IT.



**FREEWAY** (See BOWIE on page 95)