

BARRE/BARRE PLAINS

TANNER-HILLER (8B5) 4 SW UTC-5(-4DT) N42°21.38' W72°07.81'

NEW YORK
L-33C, 34J

- 589 NOTAM FILE BDR
- RWY 06-24:** H3027X40 (ASPH) S-9
- RWY 06:** Thld dspclcd 150'. Trees.
- RWY 24:** Thld dspclcd 200'. Trees.

SERVICE: S2

AIRPORT REMARKS: Unattended. Arpt CLOSED except PPR-ref NOTAMS. Wildlife on and invof arpt. Fuel not avbl. Gliders opr from arpt on intermittent basis. Gliders and powered acft: follow left hand tfc pat on both rwys. Rwy 24 has grvl ovrn, Rwy 06 has turf ovrn.

AIRPORT MANAGER: (609) 923-3228

COMMUNICATIONS: CTAF/UNICOM 123.0

CLEARANCE DELIVERY PHONE: For CD ctc Yankee Apch at 860-386-3597

RADIO AIDS TO NAVIGATION: NOTAM FILE BDR.

GARDNER (L) (L) VOR/DME 116.95 GDM Chan 116(Y) N42°32.76' W72°03.49' 210° 11.8 NM to fld. 1280/14W.

BEDFORD

LAURENCE G HANSCOM FLD (BED)(KBED) P (AF) 0 NE UTC-5(-4DT) N42°28.20'

NEW YORK
COPTER
H-11D, 12K, L-33D, 34J
IAP, AD

W71°17.34' 132 B TPA—See Remarks Class I, ARFF Index B NOTAM FILE BED

RWY 11-29: H7011X150 (ASPH-GRVD) S-120, D-250, 2S-127, 2D-455 PCN 82 F/C/W/T HIRL

RWY 11: MALSR. PAPI(P4L)—GA 3.0° TCH 67'. RVR-T Hill.

RWY 29: MALSR. PAPI(P4R)—GA 3.0° TCH 52'. RVR-R

RWY 05-23: H5107X150 (ASPH-GRVD) S-120, D-250, 2S-149, 2D-436 PCN 79 F/C/W/T MIRL

RWY 05: REIL. PAPI(P4L)—GA 3.5° TCH 55'.

RWY 23: REIL. PAPI(P4R)—GA 3.2° TCH 55'.

LAND AND HOLD-SHORT OPERATIONS

LDG RWY	HOLD-SHORT POINT	AVBL LDG DIST
RWY 05	11-29	3000
RWY 11	05-23	2650
RWY 29	05-23	3662

RUNWAY DECLARED DISTANCE INFORMATION

RWY 05: TORA-5107 TODA-5107 ASDA-5107 LDA-5107
RWY 11: TORA-7011 TODA-7011 ASDA-7011 LDA-7011
RWY 23: TORA-5107 TODA-5107 ASDA-5107 LDA-5107
RWY 29: TORA-7011 TODA-7011 ASDA-7011 LDA-7011

SERVICE: S4 FUEL 100LL, JET A QX 1, 2, 3, 4 LGT Actvt MALSR

Rwy 11 and 29; REIL Rwy 05 and 23; HIRL Rwy 11-29; MIRL Rwy 05-23; twy lghts-118.5. **MILITARY—JASU** 3(A/M32A-86) 2(MA-1A) FUEL 100LL, A **TRAN ALERT** Opr 1200-0400Z± wkcd; 1400-2200Z± Sun; PPR OT and hol DSN 845-5589/5592. De-icing avbl fr vendor. Ltd hgr space and extremely ltd maint. Fleet svc avbl fr vendor. Mil acft must arng for prkg on east ramp with tran alert or vendor.

NOISE: Noise rules in effect, helicopters opr within controlled airspace are rqr'd to maintain highest possible alt. Voluntary noise abatement procs in efct ctc amgr 671-212-6592. Noise sensitive historic area S of arpt; for Rwy 23 dep cont rwy hdg to 1000 ft AGL, turning crosswind ovr Rte 2.

AIRPORT REMARKS: Attended continuously. Birds and wildlife on and invof arpt. PPR for all acft carrying explosives call 617-212-6592. PPR for maint eng run-ctc amgr. No plas/tgls for acft 12,500 lbs and over. No plas/tgls for acft under 12,500 lbs 0400-1200Z±. Be alert for small acft parked on ramps. Rwy 29 right tfc acft over 12,500 lbs.

TPA-1132(1000) fixed wing, 1632(1500) turbojet, 1932(1800) heavy jet acft. Clsd to Part 121 ACR ops with over 60 seats excp 24 hr PPR call 781-869-8000. Twy C, F, J, N, R, S, T, Twy M south of Twy E & Twy G btn Rwy 11-29 & Rwy 05-23 clsd to acft gr than 118 ft wingspan. Twy R clsd to ACR ops-GA use only. Twy R1, R2 clsd to acft gr than 49 ft wingspan. Surcharge for each ldg and dep 0400-1200Z±. Coml and tsnt ldg fee. Flight Notification Service (ADCUS) avbl. User fee arpt. NOTE: See Special Notices—Arrival Alert.

AIRPORT MANAGER: 617-212-6592

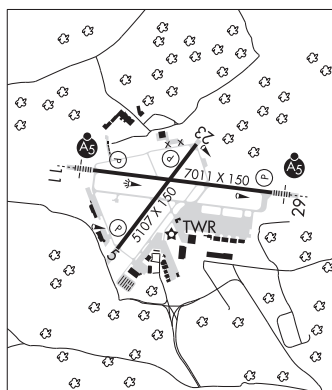
WEATHER DATA SOURCES: ASOS 124.6 (781) 372-5512. LAWRS.

COMMUNICATIONS: CTAF 118.5 ATIS 124.6 (781) 372-5509 UNICOM 122.95

® BOSTON APP/DEP CON 124.4

HANSCOM TOWER 118.5 (1200-0400Z±) GND CON 121.7 CLNC DEL 121.85

AIRSPACE: CLASS D svc 1200-0400Z±; other times CLASS G.



CONTINUED ON NEXT PAGE

CONTINUED FROM PRECEDING PAGE

VOR TEST FACILITY (VOT) 110.0

RADIO AIDS TO NAVIGATION: NOTAM FILE BOS.

BOSTON (VH) (DH) VOR/DME 112.7 BOS Chan 74 N42°21.45' W70°59.37' 313° 14.9 NM to fld. 18/16W.

VOR unusable:

043°-053° byd 40 NM blo 5,000'
 043°-053° byd 74 NM
 055°-065° byd 40 NM blo 5,000'
 055°-065° byd 47 NM
 061°-104° byd 18 NM blo 2,000'
 070°-108° byd 40 NM
 109°-119° byd 40 NM blo 6,000'
 109°-119° byd 58 NM
 120°-148° byd 40 NM
 149°-167° byd 40 NM blo 2,100'
 149°-167° byd 83 NM
 168°-177° byd 40 NM
 178°-188° byd 40 NM blo 11,000'
 178°-188° byd 50 NM
 204°-262° byd 40 NM
 263°-273° byd 40 NM blo 4,000'
 263°-273° byd 54 NM
 271°-060° byd 25 NM blo 3,500'
 274°-337° byd 40 NM
 350°-042° byd 40 NM

DME unusable:

061°-104° byd 18 NM blo 2,000'
 271°-060° byd 25 NM blo 3,500'

LAWRENCE (L) DME 112.5 LWM Chan 72 N42°44.43' W71°05.69' 208° 18.4 NM to fld. 306. NOTAM FILE

LWM.

DME unusable:

160°-195° byd 23 NM blo 2,500'
 271°-060° byd 25 NM blo 3,500'

ILS/DME 111.15 I-BED Chan 48(Y) Rwy 11. Class IA. Unmonitored when ATCT clsd.**ILS/DME** 111.15 I-ULJ Chan 48(Y) Rwy 29. Class IA. Unmonitored when ATCT clsd.**BERKLEY****MYRICKS** (1M8) 3 SE UTC-5(-4DT) N41°50.34' W71°01.59'

NEW YORK

73 NOTAM FILE BDR

RWY 09-27: 2466X50 (TURF) 0,3% up NE**RWY 09:** Tree.**RWY 27:** Trees.**SERVICE:** S2 FUEL 100LL**AIRPORT REMARKS:** Attended dalgt hrs. Wildlife on and invof arpt. Aerial banner pickup and drop opns on and invof arpt.**AIRPORT MANAGER:** 508-822-2457**COMMUNICATIONS:** CTAF 122.9**CLEARANCE DELIVERY PHONE:** For CD ctc Providence Apch at 401-738-8945, when Apch clsd ctc Boston ARTCC at 603-879-6859.