

**NEW BEDFORD RGNL** (EWB)(KEWB) 2 NW UTC-5(-4DT) N41°40.59' W70°57.47'

NEW YORK

79 B LRA Class IV, ARFF Index A NOTAM FILE EWB

H-10J, 11D, 12K, L-33D

**RWY 05-23:** H5400X150 (ASPH-GRVD) S-30, D-108, 2S-137, 2D-195 HIRL 0.3% up NE**RWY 05:** MALS. RVR-T Tree.**RWY 23:** MALS. PAPI(P4L)—GA 3.0° TCH 46'. RVR-R Thld dspld 400'. Tree.**RWY 14-32:** H5002X75 (ASPH) S-33, D-48, 2D-95 MIRL**RWY 14:** PAPI(P4L)—GA 3.42° TCH 50'. Tree.**RWY 32:** REIL. PAPI(P4L)—GA 3.5° TCH 50'. Trees.**SERVICE:** S4 FUEL 100LL, JET A OX 3, 4 LGT When twr clsd  
ACTIVATE MALS. RWys 05 and Rwy 23, REIL Rwy 32, HIRL Rwy 05-23, MIRL Rwy 14-32—CTAF. PAPI Rwy 14, Rwy 23 and Rwy 32 ops 24 hrs.**AIRPORT REMARKS:** Attended 1100-0400Z†. Birds and wildlife on and in/ov arpt. Arpt clsd to non sked acr acct with more than 31 pax exc 48 hr PPR 508-991-6161. Twys A1 and A2 for air carrier acct only. Ldg fees for acct ovr 3,000 lbs. Flight Notification Service (ADCUS) available.**AIRPORT MANAGER:** 508-991-6161**WEATHER DATA SOURCES:** ASOS 126.85 (508) 992-0195. LAWRS.**COMMUNICATIONS:** CTAF 118.1 ATIS 126.85 (508) 994-6277 UNICOM 122.95Ⓡ **PROVIDENCE APP/DEP CON** 128.7 (Sun-Fri 1030-0530Z†, Sat 1030-0500Z†) other times ctc**BOSTON CENTER APP/DEP CON** 124.85**TOWER** 118.1 (1130-0300Z†) **GND CON** 121.9**CLEARANCE DELIVERY PHONE:** For CD when Apch clsd ctc Boston ARTCC at 603-879-6859.**AIRSPACE:** CLASS D svc 1130-0300Z†; other times CLASS G.**RADIO AIDS TO NAVIGATION:** NOTAM FILE PVD.**PROVIDENCE (H) (DH) VOR/DME** 115.6 PVD Chan 103 N41°43.46' W71°25.78' 112° 21.4 NM to fld. 49/14W.

VOR unusable:

085°-105° byd 12 NM blo 5,500'

085°-105° byd 8 NM blo 3,000'

106°-294° byd 30 NM blo 3,000'

295°-330° byd 30 NM blo 6,000'

331°-084° byd 30 NM blo 3,000'

DME unusable:

085°-105° byd 12 NM blo 5,500'

085°-105° byd 8 NM blo 3,000'

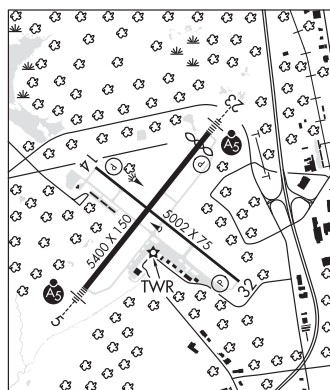
106°-152° byd 11 NM blo 2,000'

106°-152° byd 20 NM blo 4,000'

153°-294° byd 30 NM blo 3,000'

295°-330° byd 30 NM blo 6,000'

331°-084° byd 30 NM blo 3,000'

**ILS/DME** 109.7 I-EWB Chan 34 Rwy 05. Unmonitored when ATCT clsd. Autopilot cpd apch blw 470' NA. Localizer backcourse unusable 15° left and r of course; byd 12 NM. Backcourse DME unusable 15° left and r of course; byd 12 NM.**NEWBURYPORT****PLUM ISLAND** (2B2) 1 SE UTC-5(-4DT) N42°47.72' W70°50.37'

NEW YORK

11 NOTAM FILE BDR

**RWY 14-32:** 2300X100 (TURF)**RWY 14:** Trees.**RWY 32:** Trees.**RWY 10-28:** H2105X50 (ASPH) S-8**RWY 10:** Trees.**RWY 28:** Thld dspld 300'. Fence.**SERVICE:** S4 FUEL 100LL**AIRPORT REMARKS:** Attended Apr-Sep 1300-2300Z†. Attended irregularly Oct-Mar. Wildlife in/ov arpt. No touch and go allowed. Ctc mgr for all arpt use reqs. Owner does not oversee ops.**AIRPORT MANAGER:** 978-463-4222**COMMUNICATIONS:** CTAF/UNICOM 123.0Ⓡ **BOSTON APP/DEP CON** 124.4 Clnc del thru Bridgeport Radio (BDR) 1-866-293-5149.**CLEARANCE DELIVERY PHONE:** For CD ctc Boston Apch at 603-594-5552.