

NEW YORK SKYPORTS INC SPB (6N7) 0 E UTC-5(-4DT) N40°44.04' W73°58.37'
00 NOTAM FILE ISP

**NEW YORK
COPTER**

WATERWAY N-S: 10000X1000 (WATER)

SEAPLANE REMARKS: Attended 1300Z†-dusk. No tie-downs and no overnight stays avbl. Pilots must complete a proving fit with an authorized member of the N.E. Seaplanes Pilots Association prior to spbase use. 3-bladed props rqrd on all seaplanes. Pilots rqrd not to fly over the 59th Street Bridge. East River velocity 2.6 miles per hr in SSW direction. Heavy boat tfc in river. Pilots rqrd to taxi 1000' offshore on Manhattan side before beginning tkf. CH13 (VHF 165.65) is monitored at seaport for inbound boat tfc and intership nav safety. Ldg fee.

AIRPORT MANAGER: (201) 214-0969

COMMUNICATIONS: CTAF 122.9

CLEARANCE DELIVERY PHONE: For CD ctc New York Apch at 800-645-3206.

NEW YORK STEWART INTL (SWF)(KSWF) P (A AR ANG MC) 44 N UTC-5(-4DT) N41°30.25'
W74°06.29'

**NEW YORK
H-101, 121, L-338, 341
IAP, AD**

491 B TPA—See Remarks Class I, ARFF Index C NOTAM FILE SWF MON Airport

RWY 09-27: H11817X150 (ASPH-GRVD) S-85, D-175, 2S-175,
2D-350, 2D/2D2-775 PCN 65 F/A/W/T HIRL CL

RWY 09: ALSF2. TDZL. PAPI(P4L)—GA 3.0° TCH 65'. RVR-TMR Thld dsplcd 2000'. Fence. 0.4% down.

RWY 27: REIL. PAPI(P4L)—GA 3.0° TCH 56'. RVR-TMR Thld dsplcd 2000'. Tree.

RWY 16-34: H6004X150 (ASPH-GRVD) S-120, D-190, 2S-175,
2D-350, 2D/2D2-800 PCN 65 F/A/W/T HIRL 0.6% up NW

RWY 16: REIL. PAPI(P4L)—GA 3.0° TCH 53'.

RWY 34: REIL. PAPI(P4L)—GA 3.0° TCH 49'. Trees.

RUNWAY DECLARED DISTANCE INFORMATION

RWY 09: TORA-11817 TODA-11817 ASDA-10817 LDA-8817

RWY 16: TORA-6004 TODA-6004 ASDA-6004 LDA-6004

RWY 27: TORA-11817 TODA-11817 ASDA-11817 LDA-9817

RWY 34: TORA-6004 TODA-6004 ASDA-6004 LDA-6004

SERVICE: S4 FUEL 100LL, JET A LGT SFL Rwy 09 O/S UFN. Rwy 16 PAPI unusbl byd 5 degs left of cntrnl. **MILITARY—JASU 1(MA-1A) 1(M32-60) 1(MD-3) FUEL A++ (Mil), A+ (C845-567-9800) (NC-100LL) TRAN ALERT** No tran maint.

NOISE: Noise abatement procedures in effect ctc arpt manager 845-838-8200. Avoid Orange Co. Arpt, located 7 NM west-northwest during VFR apchs. Rgt tfc on Rws 16 and 27 may be used for noise abatement.

AIRPORT REMARKS: Attended continuously. Birds and deer on and invof arpt. Be aware, extensive glider activity 8 miles east of HUO VORTAC in a 5 mile radius. All sfc. Work in progress grass cutting conducted April through October. Hudson Valley Rgnl located 3.3 NM southwest IGN VORTAC, do not mistake for Stewart Intl. TPA-1200(709) hel, 1500(1009) reciprocating eng, 2500(2009) Turboprop/Jet. Twy L clsd exc 20 minutes PPR. Twy L apron follow me vehicle required. Ctc arpt ops 845-838-8237. Twys B and H rstd to acft with wingspan greater than 118'. Twy C between Twy B and Twy F not visible from twr. Twy C rstd to acft with wingspan greater than 125' between terminal bldg and bldg 118. Acft with wingspan 172' or more rqrd vehicle escort for all Twy C ops south of terminal apron. Ctc arpt ops 845-838-8237. No jet trng 0400-1200Z† dly. Rwy 16 and Rwy 34 has mil assault ldg zone and basic markings with aiming points. Rwy 09 VGSI and ILS glidepath not coincident. Compass calibration pad located on the Twy G runway apron. User fee arpt. User fee charged to all intl flts. Flight Notification Service (ADCUS) avbl. Ldg fee for acft \$1.53 per 1,000 lbs. certificated gross maximum tkof weight.

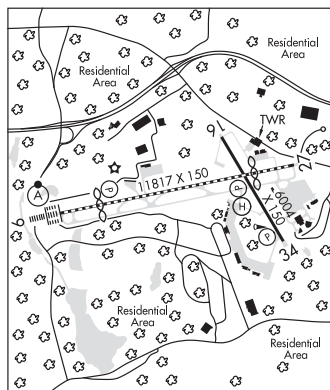
AIRPORT MANAGER: 845-838-8200

COMMUNICATIONS: ATIS 124.575 845-567-9311 UNICOM 122.95

Ⓡ **NEW YORK APP/DEP CON** 132.75

TOWER 121.0 **GND CON** 121.9

AIRSPACE: CLASS D.



CONTINUED ON NEXT PAGE

CONTINUED FROM PRECEDING PAGE

RADIO AIDS TO NAVIGATION: NOTAM FILE ISP.

KINGSTON (VL) (L) VOR/DME 117.6 IGN Chan 123 N41°39.93' W73°49.33' 245° 16.0 NM to fld. 581/12W.

VOR unusable:

- 008°-018° byd 40 NM blo 4,000'
- 008°-018° byd 70 NM
- 020°-123° byd 40 NM
- 045°-050° byd 35 NM blo 4,300'
- 070°-140° byd 30 NM blo 3,400'
- 082°-092° byd 20 NM blo 4,000'
- 082°-092° byd 35 NM blo 5,500'
- 130°-148° byd 40 NM
- 203°-216° byd 30NM
- 243°-253° byd 40 NM
- 275°-310° byd 40 NM
- 311°-321° byd 40 NM blo 6,000'
- 311°-321° byd 64 NM
- 322°-001° byd 40 NM

NEELY NDB (MHW/LOM) 335 SW N41°29.15' W74°13.68' 093° 5.7 NM to fld. 408/14W. NOTAM FILE SWF.

ILS 110.1 I-SWF Rwy 09. Class III. LOM NEELY NDB.

ILS/DME 109.95 I-JKH Chan 36(Y) Rwy 27. Class IB.

HELIPAD H1: H40X40 (ASPH)

HELIPORT REMARKS: Helipad located intersection Twy B and Twy C and east of Twy C.

WEST 30TH ST HELIPOINT (JRA)(KJRA) 0 N N40°45.29' W74°00.42'

NEW YORK
COPTER

7 NOTAM FILE ISP

HELIPAD H1: H45X45 (ASPH) S-6 PERIMETER LGTS

HELIPAD H1: Rgt tfc.

HELIPAD H2: H45X45 (ASPH) S-6

HELIPAD H2: Rgt tfc.

HELIPAD H3: H45X45 (ASPH)

HELIPAD H4: H45X45 (ASPH)

HELIPAD H5: H45X45 (ASPH)

HELIPAD H6: H45X45 (ASPH)

SERVICE: FUEL JET A

HELIPORT REMARKS: Attended continuously. North and south finger pier pads are clsd. +40' lgts lctd at south end of heliport.

+10' fencing lctd along east edge of heliport and btn ldg spots 2 and 3. All tkfs and ldgs made over Hudson River. Fire alarm box to nearby firehouse lctd at fac. All helipads, H1, H6 circular. Helipad H3 no ingress/egress over 12th Avenue.

Parking avbl. Helipad H1 perimeter lgts.

AIRPORT MANAGER: 212-563-4442

COMMUNICATIONS: CTAF/UNICOM 123.05

APP/DEP CON 126.05 127.85

CLEARANCE DELIVERY PHONE: For CD ctc New York Apch at 516-683-2849.

NEWFANE

HOLLANDS INTL FLD (85N) 3 SW UTC-5(-4DT) N43°15.29' W78°45.93'

DETROIT

360 NOTAM FILE BUF

RWY NE-SW: 2875X75 (TURF)

RWY NE: Trees.

RWY SW: Trees.

HELIPORT REMARKS: Unattended. Parachute Jumping. Rwy SW nmrs 100' trees srnd rwy. Rwy NE; nmrs trees +25'-80' tall;

50' left to 143' right of cntrln. Rwy NE/SW Rolling terrain. 4" ditch between rwy and txy. Rwy used for farming. Large round hay bales on rwy; unsafe for acft.

AIRPORT MANAGER: 716-536-8653

COMMUNICATIONS: CTAF 122.9

CLEARANCE DELIVERY PHONE: For CD ctc Cleveland ARTCC at 440-774-0490.