

ALBERT (See PHILIPSBURG on page 297)

ALLEGHENY CO (See PITTSBURGH on page 299)

ALLENTOWN

ALLENTOWN QUEEN CITY MUNI (XLL)(KXLL) 2 SW UTC-5(-4DT) N40°34.22' W75°29.30' **NEW YORK**
 399 B NOTAM FILE IPT L-30K, 33A, 34G
 IAP

RWY 07-25: H3950X75 (ASPH-GRVD) S-12 MIRL
RWY 07: REIL. PAPI(P4L)—GA 3.0° TCH 41'. Brush.
RWY 25: REIL. PAPI(P4L)—GA 3.5° TCH 40'. Pole.
RWY 15-33: H3160X75 (ASPH) S-12 MIRL 0.4% up SE
SERVICE: S2 FUEL 100LL, JET A LGT Actv REIL Rwy 07-25; MIRL Rwy 07-25 & 15-33—CTAF. Rwy 25 VGS1 unusbl byd 3 deg L of course.

NOISE: Noise abatement procedures in effect, for details ctc arpt manager.
AIRPORT REMARKS: Attended 1200-2300Z. Deer, groundhogs and birds on and invof arpt. For svc after hrs ctc 610-266-6000.

AIRPORT MANAGER: 610-791-5193

WEATHER DATA SOURCES: AWOS-3 127.875 (610) 231-3111. Unavl byd 8 nm.

COMMUNICATIONS: CTAF/UNICOM 122.7

Ⓡ APP/DEP CON 119.65 (3000' and blo) 124.45 (above 3000')

CLNC DEL 118.9

CLEARANCE DELIVERY PHONE: For CD ctc Allentown Apch at 800-728-6322.

RADIO AIDS TO NAVIGATION: NOTAM FILE IPT.

EAST TEXAS (L) (L) VORW/DME 110.2 ETX Chan 39 N40°34.86' W75°41.04' 103° 9.0 NM to fld. 741/9W.

VOR unusable:
 255°-265°



LEHIGH VALLEY INTL (ABE)(KABE) 3 NE UTC-5(-4DT) N40°39.14' W75°26.42' **NEW YORK**
 394 B TPA—See Remarks LRA Class I, ARFF Index C NOTAM FILE ABE H-10I, 12I, L-33A, 34G
 IAP, AD

RWY 06-24: H7599X150 (ASPH-GRVD) S-120, D-228, 2S-175, 2D-368 PCN 65 F/C/X/U HIRL CL

RWY 06: MALSR. PAPI(P4L)—GA 3.0° TCH 74'. RVR-TR Trees.

RWY 24: REIL. PAPI(P4R)—GA 3.0° TCH 71'. RVR-TR Thld displd 510'. Road.

RWY 13-31: H5800X150 (ASPH-GRVD) S-75, D-161, 2S-175, 2D-290 PCN 35 F/A/W/U HIRL

RWY 13: MALSR.

RWY 31: REIL. PAPI(P4L)—GA 3.0° TCH 54'. Pole.

RUNWAY DECLARED DISTANCE INFORMATION

RWY 06: TORA-7599 TODA-7599 ASDA-7599 LDA-7599

RWY 13: TORA-5800 TODA-5800 ASDA-5800 LDA-5800

RWY 24: TORA-7599 TODA-7599 ASDA-7599 LDA-7089

RWY 31: TORA-5800 TODA-5800 ASDA-5800 LDA-5800

ARRESTING GEAR/SYSTEM

RWY 13: EMAS

RWY 31: EMAS

SERVICE: S4 FUEL 100LL, JET A OX 1, 2

NOISE: Noise abatement procedures for turbojet powered acft in effect; preferential Rwy 06-24. Rwy 06-24 fly rwy heading until 2000'.

Rwy 06, Rwy 13 and Rwy 24 departures be advised that departures are over a noise sensitive area. Rwy 31 turbojet departures turn right heading 360° until 2000' MSL.

AIRPORT REMARKS: Attended continuously. Birds, groundhogs and deer on and invof arpt. TPA—1399(1006) reciprocating props, 1999(1606) turbine powered acft. Military acft plan to park and refuel on Hangar 7 apron. Twy C rstd to maximum acft weight 12,500 lbs. Twy B south of Twy B3 rstd to acft with wingspan 118' or less. Twy B3 west of Rwy 13-31 rstd to acft with wingspan 118' or less. Twy E rstd to acft max GWT 12,500 lbs. Twy J rstd to acft with 118' wingspan or less. U.S. Customs user fee arpt. Ldg fee. Flight Notification Service (ADCUS) avbl—2 hours PPR.

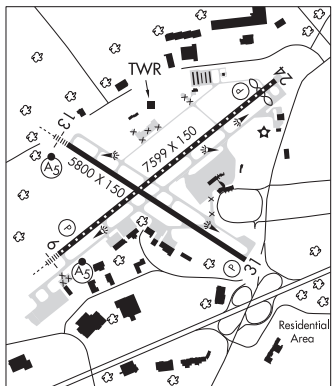
AIRPORT MANAGER: 610-266-6001

WEATHER DATA SOURCES: ASOS 126.975 (610) 264-1765.

COMMUNICATIONS: ATIS 126.975 UNICOM 122.95

Ⓡ ALLENTOWN APP/DEP CON 119.65 (3000' & blo) 124.45 (abv 3000') 124.45 (from west)

TOWER 120.5 GND CON 121.9 CLNC DEL 124.05



CONTINUED ON NEXT PAGE

NE, 5 SEP 2024 to 31 OCT 2024

CONTINUED FROM PRECEDING PAGE

AIRSPACE: CLASS C svc ctc APP CON.

RADIO AIDS TO NAVIGATION: NOTAM FILE ABE.

ALLENTOWN (L) (L) VORTACW 117.5 FJC Chan 122 N40°43.60' W75°27.28' 182° 4.5 NM to fld. 681/10W.

TACAN AZIMUTH & DME unusable:

061°-299° byd 30 NM blo 4,000'

300°-060° byd 26 NM blo 4,500'

VOR unusable:

021°-189° byd 10 NM

190°-260° blo 9,000'

190°-260° byd 24 NM

261°-306° byd 9 NM blo 4,000'

307°-349°

350°-020° blo 3,500'

350°-020° byd 33 NM blo 4,000'

ILS 110.7 I-ABE Rwy 06. Class IIE.

ILS 111.9 I-BXY Rwy 13. Class IB.

ILS/DME 108.55 I-GUW Chan 22(Y) Rwy 24. Class "IE".

COMM/NAV/WEATHER REMARKS: During ATC Zero events, ARFF will mnt 120.5 for emerg notifications.

ALLENTOWN N40°43.60' W75°27.28' NOTAM FILE ABE.

NEW YORK

(L) (L) VORTACW 117.5 FJC Chan 122 182° 4.5 NM to Lehigh Valley Intl. 681/10W.

H-101, L-30K, 33A, 34G

TACAN AZIMUTH & DME unusable:

061°-299° byd 30 NM blo 4,000'

300°-060° byd 26 NM blo 4,500'

VOR unusable:

021°-189° byd 10 NM

190°-260° blo 9,000'

190°-260° byd 24 NM

261°-306° byd 9 NM blo 4,000'

307°-349°

350°-020° blo 3,500'

350°-020° byd 33 NM blo 4,000'

ALTOONA/BLAIR CO (A00)(KA00) 12 S UTC-5(-4DT) N40°17.78' W78°19.20'

DETROIT

1503 B Class II, ARFF Index A NOTAM FILE A00

H-10H, 12I, L-29D, A

RWY 03-21: H5465X100 (ASPH-GRVD) S-16, D-44 PCN 13 F/B/X/T

IAP

HIRL 0.6% up S

RWY 03: REIL. PAPI(P4L)—GA 3.0° TCH 43'. Trees.

RWY 21: MALSR. PAPI(P4L)—GA 3.0° TCH 52'. Trees.

RWY 12-30: H3668X75 (ASPH) S-11.5, D-33 PCN 11 F/B/X/T MIRL

RWY 12: REIL. PAPI(P4L)—GA 3.0° TCH 54'. Trees.

RWY 30: REIL. PAPI(P4R)—GA 4.0° TCH 54'. Tree.

RUNWAY DECLARED DISTANCE INFORMATION

RWY 03: TORA-5465 TODA-5465 ASDA-5465 LDA-5465

RWY 12: TORA-3668 TODA-3668 ASDA-3668 LDA-3668

RWY 21: TORA-5465 TODA-5465 ASDA-5465 LDA-5465

RWY 30: TORA-3668 TODA-3668 ASDA-3668 LDA-3668

SERVICE: S4 FUEL 100LL, JET A OX 1, 3 LGT Rwy 03-21, thld lgts and edge lgts OTS exc with PCL, avbl fm 0100-1300Z† daily. Rwy 12-30, thld lgts and edge lgts OTS exc with PCL avbl fm 0100-1300Z† daily. HIRL Rwy 03-21 and MIRL Rwy 12-30 preset low instst, incr instst and ACTVT PAPI Rwy 12, 30, 03 and 21, MALSR Rwy 21 and REIL Rwy 03, 12 and 30—CTAF.

NOISE: Preferred rwy is Rwy 21; for noise abatement when departing Rwy 03, maintain rwy heading until 2 NM north of arpt.

AIRPORT REMARKS: Attended Mon-Fri 0930-0330Z†, Sat 1230-0030Z†, Sun 1330-0130Z†. Rwy/twy conds unmonitored outside of normal attendance hrs. Specialized acct (ultralgt, homebuilt, etc) ctc amgr 814-793-2027 or UNICOM prior to ldg. PPR 24 hrs for unscheduled air carrier and non-air carrier ops with more than 30 passenger seats call arpt manager 814-793-2027. Exp for taxi, Rwy 12-30 not avbl for sked acr opns with more than 9 pax and unsked for acr opns with more than 30 pax.

AIRPORT MANAGER: 814-793-2027

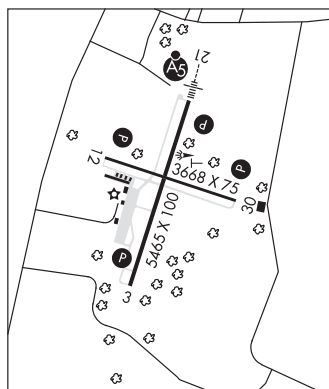
WEATHER DATA SOURCES: ASOS 127.125 (814) 793-9655.

COMMUNICATIONS: CTAF 123.6

RCO 122.2 (ALTOONA RADIO)

Ⓡ JOHNSTOWN APP/DEP CON 121.2 (1200-0400Z†)

Ⓡ CLEVELAND CENTER APP/DEP CON 124.4 (0400-1200Z†)



CONTINUED ON NEXT PAGE