

**NORFOLK INTL** (ORF)(KORF) 3 NE UTC-5(-4DT) N36°53.68' W76°12.07'

WASHINGTON

26 B LRA Class I, ARFF Index C NOTAM FILE ORF

H-101, 121, L-350, 36H

**RWY 05-23:** H9001X150 (ASPH-CONC-GRVD) S-150, D-200,

IAP, AD

2S-175, 2D-350, 2D/2D2-475 PCN 53 R/C/W/T HIRL CL

**RWY 05:** MALSR. PAPI(P4L)—GA 3.0° TCH 71'. RVR-T Thld dsplcd 1001'. Trees. Rgt tfc.**RWY 23:** MALSR. PAPI(P4L)—GA 3.0° TCH 55'. RVR-R Pole.**RWY 14-32:** H4876X150 (ASPH-GRVD) S-75, D-100, 2S-127

PCN 27 F/A/W/T MIRL

**RWY 14:** REIL. PAPI(P2L)—GA 3.0° TCH 36'. Thld dsplcd 575'. Tree. Rgt tfc.**RWY 32:** REIL. PAPI(P2L)—GA 3.0° TCH 34'. Tree.**RUNWAY DECLARED DISTANCE INFORMATION****RWY 05:** TORA-9001 TODA-9001 ASDA-8809 LDA-7809**RWY 14:** TORA-4876 TODA-4876 ASDA-4876 LDA-4301**RWY 23:** TORA-9001 TODA-9001 ASDA-8995 LDA-8995**RWY 32:** TORA-4876 TODA-4876 ASDA-3901 LDA-3901**SERVICE:** S2 FUEL 100LL, JET A OX 1, 2, 4**NOISE:** Noise abatement procedures in effect.**AIRPORT REMARKS:** Attended continuously. Parachute Jumping. Flocks of birds on and in/ovf arpt. Intmt afld mowing ops Mar-Nov. Rwy 05-23 grvd 7300' X 130' standard grooving beginning 200' from AER 05.

Rwy 05-23 longl cracks &amp; spalling. Ldg fee. Flight Notification Service (ADCUS) avbl.

**AIRPORT MANAGER:** 757-857-3344**WEATHER DATA SOURCES:** ASOS (757) 460-9348 WSP.**COMMUNICATIONS:** ATIS 127.15 (757) 464-1390

RCO 122.1R 116.9T (LEESBURG RADIO)

① **APP CON** 118.9 (010°-080°) (180°-310°) 125.7(311°-009°)**TOWER** 120.8 **GND CON** 121.9 **CLNC DEL** 118.5② **DEP CON** 125.2**AIRSPACE:** CLASS C svc ctc **APP CON**.**RADIO AIDS TO NAVIGATION:** NOTAM FILE ORF.(VH) (H) **VORTAC** 116.9 ORF Chan 116 N36°53.51' W76°12.02' at fld. 20/7W.

VOR unusable:

050°-070° byd 40 NM

100°-150° byd 40 NM

170°-180° byd 40 NM

211°-221° byd 40 NM blo 6,000'

211°-221° byd 81 NM

260°-280° byd 40 NM

306°-324° byd 40 NM

325°-335° byd 10 NM blo 4,000'

325°-335° byd 20 NM

336°-340° byd 40 NM

350°-020° byd 40 NM

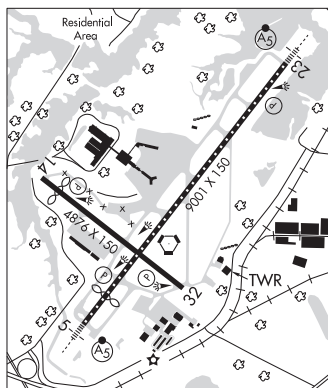
Byd 30 NM blo 2,500'

TACAN AZIMUTH unusable:

Byd 30 NM blo 2,500'

DME unusable:

Byd 30 NM blo 2,500'

**ILS/DME** 109.1 I-ORF Chan 28 Rwy 05. Class IB. Glideslope unusable for coupled apch blw 1,180' MSL.**ILS/DME** 109.1 I-JZQ Chan 28 Rwy 23. Class IA.**NORFOLK NS (CHAMBERS FLD)** (NGU)(KNGU) N 0 NW UTC-5(-4DT) N36°56.25'

WASHINGTON

W76°17.36'

H-101, 121, L-350, 36H

15 B NOTAM FILE NGU Not insp.

DIAP, AD

**RWY 10-28:** H8370X200 (ASPH-GRVD) PCN 56 R/B/W/T HIRL CL**RWY 10:** ALSF2. OLS. TDZL. REIL. PAPI(P4R)—GA 3.0° TCH 35'. Thld dsplcd 299'.**RWY 28:** SSALF. OLS. TDZL. REIL. PAPI(P4R)—GA 3.0° TCH 36'. Thld dsplcd 995'. Rgt tfc.**RUNWAY DECLARED DISTANCE INFORMATION****RWY 10:** TORA-8370 LDA-8071**RWY 28:** TORA-8370 LDA-7375**ARRESTING GEAR/SYSTEM****RWY 10** HOOK E28(B) (1500 FT).HOOK E28 (B) (1062 FT). **RWY 28**

CONTINUED ON NEXT PAGE

CONTINUED FROM PRECEDING PAGE

**SERVICE:** OX 1, 2 **MILITARY—A-GEAR** Avoid centrin lgt Rwy 10–28 dur cable engagement to prevent tailhook skip. Dist Rwy 28 measured fr displ thr. E–28(B) in raised posn at dep end of rwy nrmlly. Shortfld gear avbl with 20 min PN. **JASU** (NC–10C) (NC–BA/A1) (NCP–105 Ctc Air Ops Duty Officer to ensure avbl.) **FUEL** J5. No tran copter hot pit wo prior coord with host squadron. **FLUID** ADI SP PRESAIR LHOX LOX **OIL** Unavbl. **TRAN ALERT** Ltd tran maint avbl wkend only 1200–2000Z†. Tran maint unavbl OT. 2 hr PN reqr for LOX. Lavatory svc unavbl for C–130 acft. Potable water unavbl. No tran work/msn planning/briefing spaces or COMSEC stor for detts.

**NOISE:** Noise abatement: No practice apch Mon–Sat 0400–1200Z†, Sun 0400–1800Z†. OT by NOTAM. No copter ovft Willoughby Spit exc via Point Xray (Chambers TACAN R–042/1.5 DME) or point Yankee (Chambers Tacan R–009/1.8 DME) at 500´.

**MILITARY REMARKS:** CLSD 0400Z† fourth THU NOV–1200Z† fourth FRI NOV, CLSD 1900Z† 24 DEC–1200Z† 26 DEC, CLSD 1900Z† 31 DEC–1200Z† 2 JAN. See FLIP AP/1 Supplementary Arpt Information. **RSTD** PPR for non Chambers fld based acft. DSN 262–3419/3429. C757–322–3419/3429. AMC/ATOC DSN 341–9926/7/8, C757–341–9926/7/8. Acft utilizing AMC trml ctc ATOC/AMC trml 15 min prior arr with load rpt. Acft overseas ctc AMC/ATOC via phone patch 2 hr prior arr for cstrm. All other acft, ctc Base Ops 15 min prior arr. **CAUTION** Extv fish spotter acft activity (single engine general aviation acft) upwards from 1500´ over Chesapeake Bay and adjacent coastal waters. Do not mistake Norfolk Intl 5 NM SE for Chambers Field, while inbd on TACAN/RNAV Rwy 28 apchs. Chambers Field has a single rwy; Norfolk Intl has intersecting rwys. Arr/dep TCAS equipped acft should expect numerous TCAS alerts from ships or transmitting into/out of the Chesapeake and coastal waters. Extv VFR tfc opr west of Chambers Class D and Norfolk Class C Airspace. Bird haz. Rwy 28 multiple cranes 1.2 NM to 1.3 NM fm DER 1600´ L to 4000´ R of cntrln 260´ MSL. **TFC PAT** R tfc Rwy 28. Basic f/w/VFR min 1000´ and 3 NM. Heliport Rwy 09–27. **MISC** Rwy 10–28 grooved. Flight plans for NS Norfolk, Chambers Fld and NAS Oceana should be faxed to DSN 565–9680, C757–445–9680, or emailed to W\_CNI\_Nrfk\_NSNorfolk\_N32\_ATC\_Users@navy.mil. To cfm receipt of flt plans call NS Norfolk, Chambers Fld flight planning supervisor at DSN 262–3419/3429, C757–322–3419/3429. For civil Indg permit (CALP) info ctc afld mgr C757–322–3419/3429.

**COMMUNICATIONS:** SFA ATIS 118.425 338.225

Ⓡ **NORFOLK APP CON** 118.9 273.475 (010°–310°) 125.7 335.625 (311°–009°)

**CHAMBERS TOWER** 124.3 379.15 **GND CON** 121.8 370.85 **CLNC DEL** 120.7 339.8

Ⓡ **DEP CON** 125.2 335.625 363.125

**NAVY NORFOLK HELI TWR** 126.375 290.5 (Opr Mon–Fri 1300–0400Z†, clsd Sat, Sun, and hol)

**NAVY NORFOLK HELI GND CON** 298.95 **AMC/ATOC** 130.65 349.5 **METRO** 271.6 **BASE OPS** 126.2 268.8

**AIRSPACE:** CLASS D.

**RADIO AIDS TO NAVIGATION:** NOTAM FILE ORF.

(VH) (H) **VORTAC** 116.9 ORF Chan 116 N36°53.51´ W76°12.02´ 310° 5.1 NM to fld. 20/7W.

VOR unusable:

050°–070° byd 40 NM

100°–150° byd 40 NM

170°–180° byd 40 NM

211°–221° byd 40 NM blo 6,000´

211°–221° byd 81 NM

260°–280° byd 40 NM

306°–324° byd 40 NM

325°–335° byd 10 NM blo 4,000´

325°–335° byd 20 NM

336°–340° byd 40 NM

350°–020° byd 40 NM

Byd 30 NM blo 2,500´

TACAN AZIMUTH unusable:

Byd 30 NM blo 2,500´

DME unusable:

Byd 30 NM blo 2,500´

**CHAMBERS (L) TACAN** Chan 86(Y) NGU (113.95) N36°56.40´ W76°16.64´ at fld. 10/10W. NOTAM FILE NGU.

TACAN AZIMUTH unusable:

261°–269° byd 20 NM

No NOTAM MP Wed 1230–1630Z†

**ILS/DME** 108.95 I–NGU Chan 26(Y) Rwy 10. Class IC. No NOTAM MP Wed 1230–1630Z†.

**ASR/PAR**

**COMM/NAV/WEATHER REMARKS:** Radar svc avbl Mon 1200Z† thru Fri 0400Z†. **ILS/TACAN/Radar**—ILS or LOC/DME Rwy 10—BC unused. ILS and TACAN no NOTAM MP Wed 1230–1630Z†. Radar—See Terminal Flap for Radar Minima.