

GROTON (NEW LONDON)

GROTON—NEW LONDON (GON)(KGON) P (ARNG) 3 SE UTC-5(-4DT) N41°19.80'

NEW YORK

H-101, 12K, L-33C, 34I

IAF, AD

W72°02.71'

9 B TPA—See Remarks LRA Class IV, ARFF Index A NOTAM FILE GON

RWY 05-23: H5000X150 (ASPH-GRVD) S-90, D-113, 2S-143,
2D-200 PCN 46 F/C/X/T HIRL

RWY 05: MALSR. PAPI(P4L)—GA 3.0° TCH 40'. RVR-T

RWY 23: REIL. VASI(V4L)—GA 3.0° TCH 49'. RVR-R Tree.

RWY 15-33: H4000X96 (ASPH-GRVD) S-90, D-113, 2S-143
PCN 12 R/C/X/T HIRL

RWY 15: PAPI(P4R)—GA 4.0° TCH 45'. Thld dsplcd 307'. Tree.

RWY 33: REIL. PAPI(P4L)—GA 3.75° TCH 34'. Thld dsplcd 205'. Trees.

RUNWAY DECLARED DISTANCE INFORMATION

RWY 05: TORA-5000 TODA-5000 ASDA-5000 LDA-5000

RWY 15: TORA-4000 TODA-4000 ASDA-3798 LDA-3491

RWY 23: TORA-5000 TODA-5000 ASDA-5000 LDA-5000

RWY 33: TORA-4000 TODA-4000 ASDA-3871 LDA-3666

ARRESTING GEAR/SYSTEM

RWY 05: EMAS

RWY 23: EMAS

SERVICE: S4 FUEL 100LL, JET A OX 1, 2, 3, 4 LGT When twr clsd
ACTIVATE HIRL Rwys 05-23 and 15-33, MALSR Rwy

05—CTAF. MILITARY—A-GEAR Rwy 05 EMAS 130' x 162'. Rwy 23 EMAS 340' x 162'. FUEL (NC-100LL, A. After hr
fuel, call before 0200Z† day of arr C860-715-8800.)

NOISE: Noise abatement procs in effect are as flws: Rwy 05: turn left hdg 020° til rchg 1000', then on crs; Rwy 23: turn left
hdg 210° til rchg 1000', then on crs; Rwy 33: fly rwy hdg until rchg 1000', then on crs.

AIRPORT REMARKS: Attended 1100-0200Z†. Deer, birds and waterfowl on and in/ovf arpt. For fuel after hrs call before 2100
lcl day of arr, 860-715-8800. Conditions not monitored from 1800 local to 0600 local, Monday through Friday, and from
1500 local to 0700 local, Saturday through Sunday. Tran pilots at general aviation ramp exit and re-enter arpt via pilot
pedestrian gate adjacent to main terminal with posted gate lock combination. This gate is lgtd with electronic surveillance
24 hrs a day. Clsd to unscheduled air carrier ops with more than 30 pax seats exc 48 hr PPR call 860-250-4701. No
touch and go ops are permitted btn 0300-1100Z†. Practice apchs/full-stop/touch and go lds prohibited by pure jet acft
and acft weighing 12,500 lbs and over exc by written apvl from the Connecticut Arpt Authority. TPA—1009 (1000) lgt
acft, 1509 (1500) all turbine powered acft. Terminal aerodrome forecast svc avbl. Rwy 23 nr not std. Ldg fee for business,
corporate and revenue producing acft. Flight Notification Service (ADCUS) avbl. U.S. Customs svc avbl with 6 hr PPR call
Mon-Fri 1300-2100Z† on 203-773-2040 (or toll free in the U.S. 1-800-973-2867) and from Canada
407-975-1740. Call before 2000Z† on Fri for weekend or holiday svc requests.

AIRPORT MANAGER: 860-841-9664

WEATHER DATA SOURCES: ASOS 127.0 (860) 449-8921. LAWRs.

COMMUNICATIONS: CTAF 125.6 ATIS 127.0

Ⓡ PROVIDENCE APP/DEP CON 125.75 (Sun-Fri 1030-0530Z† Sat 1030-0500Z† other times ctc)

Ⓡ BOSTON CENTER APP/DEP CON 124.85

TOWER 125.6 (1200-0300Z†) GND CON 121.65 CLNC DEL 121.65 119.85

CLEARANCE DELIVERY PHONE: For CD when Apch clsd ctc Boston ARTCC at 603-879-6859.

AIRSPACE: CLASS D svc 1200-0300Z†; other times CLASS G.

VOR TEST FACILITY (VOT) 110.25

RADIO AIDS TO NAVIGATION: NOTAM FILE GON.

(T) (M) VOR/DME 110.85 GON Chan 45(Y) N41°19.82' W72°03.12' at fld. 9/14W.

VOR portion unusable:

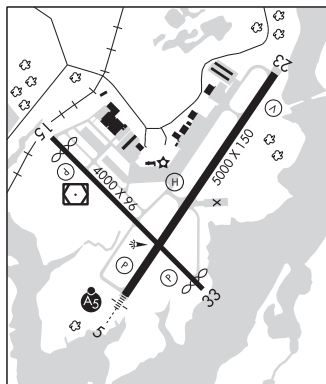
241°-265° blo 5,000'

DME unusable:

355°-019° blo 3,000'

ILS/DME 111.3 I-GON Chan 50 Rwy 05. Class IT. Unmonitored when ATCT closed.

HELIPAD HI: H45X45 (ASPH)



GROTON—NEW LONDON (See GROTON (NEW LONDON) on page 36)