

**RICHMOND/ASHLAND**

**HANOVER CO MUNI** (OFF)(KOPF) 8 N UTC-5(-4DT) N37°42.54' W77°26.20'

**WASHINGTON**

207 B TPA-1007(800) NOTAM FILE OFF

H-10H, 12I, L-34E, 36H

**RWY 16-34:** H5402X100 (ASPH-PFC) S-40 MIRL

IAP

**RWY 16:** REIL. PAPI(P4L)-GA 3.0° TCH 40'. Tree.

**RWY 34:** REIL. Trees.

**SERVICE:** S4 FUEL 100LL, JET A OX 1, 2, 3, 4 LGT ACTVT REIL

Rwys 16 & 34; MIRL Rwy 16-34-CTAF.

**NOISE:** Noise sensitive area south of arpt.

**AIRPORT REMARKS:** Attended 1200-0000Z†. Deer and birds on and in/ov arpt. For acft svcs call 804-798-6500. Rwy 34 preferred rwy with wind less than 5 kts.

**AIRPORT MANAGER:** 804-365-6208

**WEATHER DATA SOURCES:** ASOS 119.025 (804) 752-2902.

**COMMUNICATIONS:** CTAF/UNICOM 122.7

Ⓡ POTOMAC APP/DEP CON 126.4 (001°-185°) 126.75 (186°-360°) 118.2

CLNC DEL 125.4

**CLEARANCE DELIVERY PHONE:** For CD ctc Potomac Apch at 866-640-4124.

**RADIO AIDS TO NAVIGATION:** NOTAM FILE RIC.

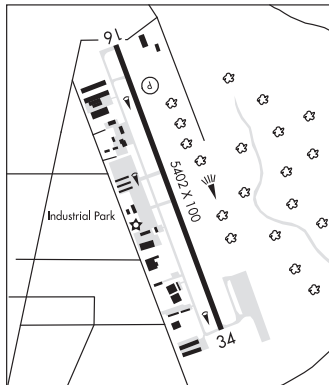
**RICHMOND (H) (H) VORTACW** 114.1 RIC Chan 88 N37°30.14'

W77°19.22' 345° 13.6 NM to fld. 158/9W.

TAC AZM unusable;

060°-075° byd 10 NM blo 1,700'

**LOC/DME** 109.7 I-OP Chan 34 Rwy 16. LOC unmonitored when arpt unatndd.



**RICHMOND** N37°30.14' W77°19.22' NOTAM FILE RIC.

**WASHINGTON**

(H) (H) VORTACW 114.1 RIC Chan 88 at Richmond Intl. 158/9W.

H-10H, 12H, L-34E, 36H

TAC AZM unusable;

060°-075° byd 10 NM blo 1,700'

**RCO** 122.4 (LEESBURG RADIO)

**ROANOKE/BLACKSBURG RGNL (WOODRUM FLD)** (ROA)(KROA) 3 NW UTC-5(-4DT)

**CINCINNATI**

N37°19.53' W79°58.53'

H-10H, 12H, L-26I

1175 B TPA-1975(800) Class I, ARFF Index B NOTAM FILE ROA

IAP, AD

**RWY 06-24:** H6800X150 (ASPH-GRVD) S-150, D-200, 2S-175, 2D-310 PCN 76 F/B/X/T HIRL

**RWY 06:** MALSR. REIL. VASI(V4L)-GA 3.0° TCH 58'.

**RWY 24:** REIL. PAPI(P4L)-GA 3.0° TCH 58'. Thld dspcd 790'.

**RWY 16-34:** H5810X150 (ASPH-GRVD) S-150, D-200, 2S-175, 2D-310 PCN 54 F/A/X/T HIRL 0.4% up NW

**RWY 34:** MALSR. PAPI(P4L)-GA 3.0° TCH 56'. Tower.

**RUNWAY DECLARED DISTANCE INFORMATION**

**RWY 06:** TORA-6800 TODA-6800 ASDA-6800 LDA-6800

**RWY 16:** TORA-5810 TODA-5810 ASDA-5810 LDA-5810

**RWY 24:** TORA-6800 TODA-6800 ASDA-6800 LDA-6010

**RWY 34:** TORA-5810 TODA-5810 ASDA-5810 LDA-5810

**ARRESTING GEAR/SYSTEM**

**RWY 34:** EMAS

**SERVICE:** S4 FUEL 100LL, JET A OX 1, 2 LGT Rwy 24 PAPI unusbl byd 5 degs R of cntrln due to trn.

**AIRPORT REMARKS:** Attended continuously. Birds in/ov arpt. For opr concerns-ATCT 540-563-1307. Tkof and Indg per and rwy cond assessment matrix not mntd 0500-1030Z† hrs dly. Dep Rwy 34 and arr Rwy 16 NA at night or during IFR cond due to trn. Twy T clsd to acft with wingspan greater than 118 ft. Cold temperature airport. Altitude correction required at or below -13C. Tsnt pilots ctc FBO UNICOM for prkg and escort.

**AIRPORT MANAGER:** 540-362-1999

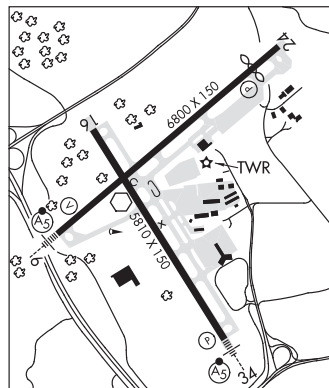
**WEATHER DATA SOURCES:** ASOS (540) 265-0680 LLWAS.

**COMMUNICATIONS:** ATIS 132.375 UNICOM 122.95

**ROANOKE RCO** 122.6 (LEESBURG RADIO)

Ⓡ APP/DEP CON 118.15 Rwy 16/34 (360°-150°) Rwy 06 (235°-074°) 126.9 Rwy 16/34 (151°-359°) Rwy 06 (075°-234°)

**TOWER** 118.3 GND CON 121.9 CLNC DEL 119.7



**CONTINUED ON NEXT PAGE**

CONTINUED FROM PRECEDING PAGE

AIRSPACE: CLASS C svc ctc APP CON svc continuous.

RADIO AIDS TO NAVIGATION: NOTAM FILE ROA.

(L) VOR/DME 109.4 ROA Chan 31 N37°20.61' W80°04.22' 107° 4.7 NM to fld. 3072/4W.

VOR unusable:

045°-063° byd 25 NM blo 7,000'

WOODRUM (T) VORW 114.9 ODR N37°19.45' W79°58.74' at fld. 1164/8W.

VOR unusable:

035°-050° byd 20 NM blo 7,000'

035°-110° byd 10 NM blo 4,200'

035°-110° byd 15 NM blo 6,500'

290°-360° byd 15 NM

VINTON NDB (MHW) 277 VIT N37°12.24' W79°52.90' 336° 8.6 NM to fld. 1543/8W.

NDB unusable:

Byd 11 NM

LDA/DME 111.1 I-SZK Chan 48 Rwy 06. Glideslope AIMED parl to LOC course. DME unusable byd 30° left of course. LOC unusable wi 0.6 NM. ILS unusable blw 1,475'.

ILS 109.7 I-ROA Rwy 34. Class IB.

SALUDA

HUMMEL FLD (W75) 6 E UTC-5(-4DT) N37°36.14' W76°26.80'

30 B NOTAM FILE DCA

RWY 01-19: H2167X45 (ASPH) S-12.5 MIRL 0.3% up S

RWY 01: APAP(PNIL). Thld dspcld 125'. Tree.

RWY 19: APAP(PNIR). Tree.

SERVICE: S4 FUEL 100LL LGT ACTIVATE MIRL Rwy 01-19—CTAF.

Rwy 01 has NSTD thld lgts, has second set of green lgts. Rwy 01 VGSI

OTS indef. Rwy 19 VGSI OTS indef.

AIRPORT REMARKS: Attended 1300-2100Z†. Unattended Thanksgiving,

Christmas day and New Year's day. Topping is city closest to the arpt.

Arpt is 2 miles ENE. Drainage swales full length of rwy on both sides.

Use of exit in front of Hummel Aviation advised. Birds and deer on and

invof of arpt during winter. Departing Rwy 01-19 climb to 500 ft

before any turn out; arriving acft use wide pattern to avoid populated

areas E and W of arpt.

AIRPORT MANAGER: 804-758-4330

WEATHER DATA SOURCES: AWOS-3 118.45 (804) 758-8592.

COMMUNICATIONS: CTAF/UNICOM 123.0

® NORFOLK APP/DEP CON 126.05

CLEARANCE DELIVERY PHONE: For CD ctc Norfolk Apch at 757-464-0757.

RADIO AIDS TO NAVIGATION: NOTAM FILE DCA.

HARCUM (L) (L) VORTACW 108.8 HCM Chan 25 N37°26.92'

W76°42.68' 061° 15.6 NM to fld. 8/7W.

VOR unusable:

056°-095° blo 2,000'

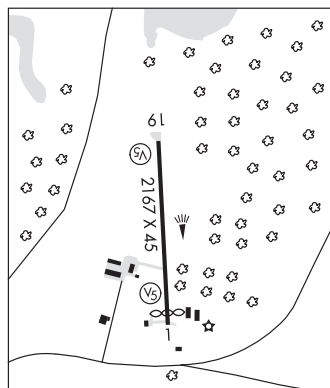
174°

275°-300° blo 2,000'

WASHINGTON

L-34E, 36I

IAP



SHANNON (See FREDERICKSBURG on page 351)

SHENANDOAH VALLEY RGNL (See STAUNTON/WAYNESBORO/HARRISONBURG on page 380)

SMITH MOUNTAIN LAKE (See MONETA on page 363)