

## LEWISBURG

**GREENBRIER VALLEY** (LWB)(KLWB) 3 N UTC-5(-4DT) N37°51.50' W80°23.97'

2302 B ARFF Index—See Remarks NOTAM FILE LWB

**RWY 04-22:** H7003X150 (ASPH-GRVD) S-90, D-120, 2S-152,

2D-160 PCN 52 F/D/X/U HIRL

**RWY 04:** MALSR.**RWY 22:** REIL.**RUNWAY DECLARED DISTANCE INFORMATION****RWY 04:** TORA-7003 TODA-7003 ASDA-7003 LDA-7003**RWY 22:** TORA-7003 TODA-7003 ASDA-7003 LDA-7003**SERVICE:** S2 **FUEL** 100LL, JET A **LGT** ACTVT MALSR Rwy 04; REIL

Rwy 22; HIRL Rwy 04-22; twy lghts—CTAF.

**AIRPORT REMARKS:** Attended continuously. Birds and deer on and in/ov arpt. Class I, ARFF Index B. PPR 24 hrs for unscheduled air carrier ops with more than 30 passenger seats call arpt manager 304-645-3961. ARFF Index C equipment avbl upon request. Rwy 04-22 edge lights are 35' fm painted rwy edge mrkgs. Rwy 04-22 usbl painted rwy width is 100' with 25' paved shoulders. Ldg fee. Multi engine only, fee waived if purchase fuel.

**AIRPORT MANAGER:** 304-646-7382**WEATHER DATA SOURCES:** AWOS-3 121.4 (304) 645-4533.**COMMUNICATIONS:** CTAF 118.9 UNICOM 122.95 ATIS 121.4 (1400-0000Z‡)**WASHINGTON CENTER APP/DEP CON** 134.4**LEWISBURG TOWER** 118.9 (1400-0000Z‡) **GND CON** 121.9**CLNC DEL** 125.725 (when twr clsd)**AIRSPACE:** CLASS D svc 1400-0000Z‡; other times CLASS G.**RADIO AIDS TO NAVIGATION:** NOTAM FILE LWB.**(H) DME** 116.05 LWB Chan 107(Y) N37°51.83' W80°23.51' at fld. 2338.

DME unusable:

095°-150°

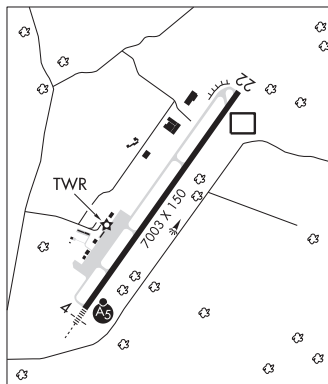
151°-185° byd 20 NM blo 10,000'

186°-196° byd 20 NM blo 7,000'

197°-094° byd 20 NM blo 10,000'

**BUSHI NDB (LOM)** 346 LW N37°46.94' W80°28.11' 044° 5.6 NM to fld. Autopilot cpd apch NA blw 2,770' MSL.**ILS** 110.35 I-LWB Rwy 04. **LOM BUSHI NDB.** Autopilot cpd apch NA blw 2,770' MSL. **LOC** unusable 0.3 NM inbd.

**COMM/NAV/WEATHER REMARKS:** Use CTAF 118.9 when twr clsd. Freq 121.5 not avbl at twr. If unable to contact Washington Center on 134.4, contact Washington Center on 125.725.

**LOGAN CO** (6L4) 4 E UTC-5(-4DT) N37°51.34' W81°54.95'

1666 B NOTAM FILE EKN

**RWY 06-24:** H3605X75 (ASPH) MIRL 0.3% up NE**RWY 06:** REIL. PAPI(P2L)—GA 3.0° TCH 47'. Trees.**RWY 24:** REIL. PAPI(P2L)—GA 3.0° TCH 42'. Trees.**SERVICE:** S4 **FUEL** 100LL, JET A **LGT** ACTVT REIL Rwy 06 and 24; PAPI Rwy 06 and 24; MIRL Rwy 06-24—CTAF.**AIRPORT REMARKS:** Attended 1400-2200Z‡. Deer and wildlife on and in/ov arpt. Low lvl C-130 mil ops in vcnty. Ck NOTAMs.

100LL fuel 24 hr self-svc. Rwy 06, 30 ft hill 800 ft from thld left. Airport access code—CTAF. Military practice rwy 1.2 miles NE of Rwy 24 end. Not charted. Wind indicator: Cntr fld windsock not ver, wind indc unrebl. Adnl windsock at Rwy 06 and 24 ends unlgtd.

**AIRPORT MANAGER:** 304-752-0975**WEATHER DATA SOURCES:** AWOS-3PT 119.375 (304) 752-0814.**COMMUNICATIONS:** CTAF 122.9Ⓡ **CHARLESTON APP/DEP CON** 119.2 (North)**INDIANAPOLIS CENTER APP/DEP CON** 126.575 (South)**CLEARANCE DELIVERY PHONE:** For CD ctc Charleston Apch at 304-344-5867 ext 281.**RADIO AIDS TO NAVIGATION:** NOTAM FILE CRW.**CHARLESTON (H) (H) VOR/DME** 117.4 HVQ Chan 121 N38°20.98' W81°46.19' 196° 30.4 NM to fld. 1099/3W.

VOR unusable:

185°-190°

240°-250°

DME unusable:

230°-240°

**COMM/NAV/WEATHER REMARKS:** For acft maint svcs call 304-752-0094 days, 304-946-4415 nights.**MARSHALL CO** (See MOUNDSVILLE on page 398)

CINCINNATI

L-26H

IAP