

**MISSOULA MONTANA** (MSO)(KMSO) 4 NW UTC-7(-6DT) N46°54.98' W114°05.43'

GREAT FALLS

3206 B Class I, ARFF Index B NOTAM FILE MSO

H-1D, L-13C

RWY 12-30: H9501X150 (ASPH-GRVD) S-145, D-170, 2D-255

IAP, AD

PCN 83 F/D/W/T HIRL

RWY 12: MALSR. PAPI(P4L)—GA 3.0° TCH 55'. RVR-T

RWY 30: REIL. PAPI(P4L)—GA 3.0° TCH 50'. RVR-R

RWY 08-26: H4612X75 (ASPH-GRVD) S-30, D-50 PCN 40 F/D/W/T MIRL

**RUNWAY DECLARED DISTANCE INFORMATION**

RWY 08: TORA-4612 TODA-4612 ASDA-4612 LDA-4612

RWY 12: TORA-9501 TODA-9501 ASDA-9501 LDA-9501

RWY 26: TORA-4612 TODA-4612 ASDA-4612 LDA-4612

RWY 30: TORA-9501 TODA-9501 ASDA-9501 LDA-9501

SERVICE: S4 FUEL 100LL, JET A1+ OX 1, 2, 3, 4 LGT When ATCT clsd ACTVT MALSR Rwy 12; PAPI Rwy 30; MIRL Rwy 08-26; HIRL Rwy 12-30—CTAF.

**AIRPORT REMARKS:** Attended continuously. Migratory & small bird actvty on & invof arpt year round. Prchgt at or arnd arpt. Cold temperature airport. Altitude correction required at or below -12C. When twr clsd Rwy 08-26 clsd exc taxi. Hang glider ops, paraglider act 5.5 NM east of AER 30. Ctc arpt mgr to req apvl prior to ultralight ops. Rwy 12-30 180° turns for acct over 12,500 lbs GWT prohibited on all movement areas. Avoid locked turns at all times. Twy G btn Rwy 08 end to Rwy 12-30 rstd to acct under 12,500 lbs. Avoid locked turns at all times. Ldg fee for all coml acct and all acct over 12,500 lbs.

AIRPORT MANAGER: 406-728-4381

WEATHER DATA SOURCES: ASOS (406) 728-3743

COMMUNICATIONS: CTAF 118.4 ATIS 126.65 (406-549-2989) UNICOM 122.95

Ⓡ SPOKANE APP/DEP CON 124.9 (1400-0620Z‡)

Ⓡ SALT LAKE CENTER APP/DEP CON 127.075 (0620-1400Z‡)

MILLER PEAK RCO 122.2 (GREAT FALLS RADIO)

TOWER 118.4 (1300-0500Z‡) GND CON 121.9

AIRSPACE: CLASS D svc 1300-0500Z‡; other times CLASS E.

RADIO AIDS TO NAVIGATION: NOTAM FILE MSO.

(VL) (L) VOR/DME 112.8 MSO Chan 75 N46°54.48' W114°05.02' at fld. 3202/13E.

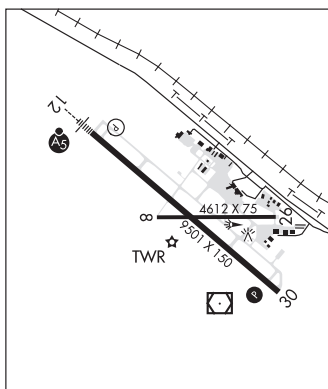
VOR unusable:

047°-067° byd 30 NM  
 067°-086° byd 30 NM blo 14,000'  
 086°-120° byd 27 NM blo 13,000'  
 086°-120° byd 36 NM blo 14,000'  
 086°-154° byd 20 NM blo 11,000'  
 120°-154° byd 35 NM blo 13,000'  
 172°-227° byd 25 NM  
 227°-247° byd 20 NM blo 12,000'  
 227°-247° byd 30 NM  
 228°-335° byd 40 NM  
 247°-262° byd 30 NM blo 12,000'  
 262°-277° byd 30 NM blo 10,000'  
 297°-347° byd 30 NM  
 347°-047° byd 10 NM  
 349°-359°  
 360°-157° byd 40 NM

DME unusable:

047°-067° byd 30 NM  
 067°-086° byd 30 NM blo 14,000'  
 086°-120° byd 27 NM blo 14,000'  
 086°-120° byd 39 NM  
 086°-154° byd 20 NM blo 11,000'  
 120°-154° byd 35 NM blo 13,000'  
 172°-227° byd 25 NM  
 227°-247° byd 20 NM blo 12,000'  
 227°-247° byd 30 NM  
 247°-262° byd 30 NM blo 12,000'  
 262°-277° byd 30 NM blo 10,000'  
 297°-347° byd 30 NM  
 347°-047° byd 10 NM

ILS 109.3 I-MSO Rwy 12. Class IA. LOC unusable byd 29° left of course byd 30° right of course.

**MULLAN PASS** MLP N47°27.42' W115°38.77' / 6028

GREAT FALLS

ASOS 135.475 (208) 744-1721

H-1D, L-13B