

MOSES LAKE

GRANT CO INTL (MWH)(KMWH) 5 NW UTC-8(-7DT) N47°12.52' W119°19.15'

SEATTLE
H-1C, L-13A
IAF, AD

1189 B ARFF Index—See Remarks NOTAM FILE MWH
RWY 14L-32R: H13503X200 (CONC-GRVD) S-85, D-155, 2S-175,
 2D-320, 2D/2D2-600 PCN 103R/B/W/T HIRL(NSTD)

RWY 14L: REIL. PAPI(P4L)—GA 3.0° TCH 75'. Bldg.

RWY 32R: MALSR. PAPI(P4L)—GA 3.0° TCH 76'. Rgt tfc.

RWY 04-22: H10000X100 (CONC-GRVD) S-75, D-100, 2S-127,
 2D-175, 2D/2D2-475 PCN 92 R/B/W/T MIRL

RWY 04: REIL. PAPI(P4L)—GA 3.0° TCH 49'. 0.4% down.

RWY 22: REIL. VASI(V4L)—GA 3.0° TCH 50'. Rgt tfc. 0.3% up.

RWY 09-27: H3500X90 (CONC-GRVD) S-100, D-150, 2S-270,
 2D-270, 2D/2D2-475 PCN 53 R/B/W/T RWY LGTS(NSTD)
 0.3% up NW

RWY 27: Rgt tfc.

RWY 18-36: H3327X75 (ASPH) S-75, D-170, 2S-175, 2D-300,
 2D/2D2-400 PCN 112F/A/W/T MIRL

RWY 18: Rgt tfc.

RWY 14R-32L: H2936X75 (CONC) S-100, D-200, 2S-175, 2D-400,
 2D/2D2-400 PCN 107R/B/W/T

RWY 14R: Ground. Rgt tfc.

LAND AND HOLD—SHORT OPERATIONS

| LDG RWY | HOLD—SHORT POINT | AVBL LDG DIST |
|---------|------------------|---------------|
| RWY 04 | 14L-32R | 4700 |
| RWY 14L | 04-22 | 7550 |
| RWY 22 | 14L-32R | 4650 |
| RWY 32R | 04-22 | 5050 |

RUNWAY DECLARED DISTANCE INFORMATION

RWY 04: TORA-10000 TODA-10000 ASDA-10000 LDA-10000

RWY 09: TORA-3500 TODA-3500 ASDA-3500 LDA-3500

RWY 14L: TORA-13503 TODA-13503 ASDA-13503 LDA-13503

RWY 14R: TORA-2936 TODA-2936 ASDA-2936 LDA-2936

RWY 22: TORA-10000 TODA-10000 ASDA-10000 LDA-10000

RWY 27: TORA-3500 TODA-3500 ASDA-3500 LDA-3500

RWY 32L: TORA-2936 TODA-2936 ASDA-2936 LDA-2936

RWY 32R: TORA-13503 TODA-13503 ASDA-13492 LDA-13492

SERVICE: S4 FUEL 100LL, JET A, A1+ OX 1 LGT ACTVT MALSR Rwy 32R; REIL Rwy 04; PAPI Rwy 14L—CTAF. Rwy 14L-32R NSTD HIRL lctd 50' from rwy edge markings. Rwy 09-27 mil ldg zone lgts only.

AIRPORT REMARKS: Attended continuously. Rwy 09-27 CLOSED exc mil operations. Flocks of large birds invof arpt April and October. Rwy 14L-32R conc tdz fst 3240 ft of Rwy 14L/conc tdz fst 1490 ft of Rwy 32R. Class IV, ARFF Index A. PPR for air carrier ops with more than 30 pax seats call 509-762-5363 from 0400-1400Z± ARFF dep staffed and equipped at Index D 24/7. Rwy 09-27 used as assault strip by C-17 acft. Rwy 09-27 and Twy F not visible from the twr. Rwy 18-36 avbl as air carrier twy movement area only. No edge intensity lgtg. Rwy 14L-32R first 10,000' AER 32R gnd 150' wide. Twy G unlighted. Extensive heavy mil jet acft ngt training 1900 PM-0300 AM lcl daily. Announce ldg intentions on CTAF after ATCT clsd. Heavy jet trng scf to 5000' within 25 miles of arpt, possible wake turbulence from larger acft using Rwy 14L-32R and Rwy 09-27. Ldg fee. Landing fees for acft over 12,500.

AIRPORT MANAGER: 509-762-5363

WEATHER DATA SOURCES: ASOS 119.05 (509) 762-5082. LAWRS.

COMMUNICATIONS: CTAF 118.25 ATIS 119.05 UNICOM 122.95

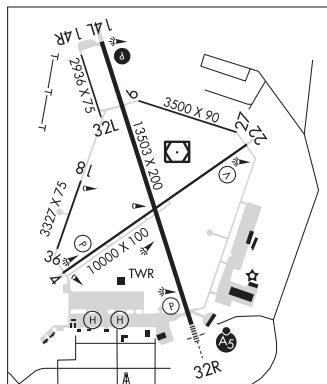
MOSES LAKE RCO 122.4 (SEATTLE RADIO)

® GRANT COUNTY APP/DEP CON 126.4 (1400-0600Z±)

® SEATTLE CENTER APP/DEP CON 126.1 (0600-1400Z±)

TOWER 128.0 (WEST) 118.25 (EAST) (1400-0600Z±) GND CON 121.9

AIRSPACE: CLASS D svc 1400-0600Z±; other times CLASS E.



CONTINUED ON NEXT PAGE

CONTINUED FROM PRECEDING PAGE

RADIO AIDS TO NAVIGATION: NOTAM FILE MWH.

MOSES LAKE (VH) (DH) VORW/DME 115.0 MWH Chan 97 N47°12.65' W119°19.01' at fld. 1193/18E.

VOR unusable:

025°-040° byd 40 NM
 055°-070° byd 40 NM
 071°-081° byd 40 NM blo 28,000'
 175°-198° byd 40 NM blo 6,000'
 175°-198° byd 67 NM blo 10,000'
 175°-198° byd 70 NM
 200°-210° byd 40 NM
 220°-230° byd 40 NM
 240°-253° byd 40 NM blo 18,000'
 254°-260° byd 40 NM
 315°-345° byd 40 NM

PELLELY NDB (MHW/LOM) 408 MW N47°06.94' W119°16.47' 324° 5.9 NM to fld. 1136/18E.

ILS 109.5 I-MWH Rwy 32R. Class IB. LOM PELLELY NDB. ILS and COMLO unmonitored when ATCT clsd.

HELIPAD H1: H50X50 (ASPH)

HELIPAD H2: H50X50 (ASPH)

MOSES LAKE MUNI (W20) 2 NE UTC-8(-7DT) N47°08.52' W119°14.27' SEATTLE

1203 B NOTAM FILE SEA

RWY 16-34: H2513X50 (ASPH) S-8 MIRL

RWY 16: PAPI(P2L)—GA 3.0°. Thld dsplcd 466'. Tree.

RWY 34: PAPI(P2L)—GA 3.0°. Thld dsplcd 253'. Bldg. Rgt tfc.

SERVICE: S4

AIRPORT REMARKS: Unattended. Bird haz. Ultralgt opr reqd to obtain arpt safety briefing from arpt mgnt prior to initial use of arpt. Pilots bring own ropes.

AIRPORT MANAGER: (509) 764-3777

COMMUNICATIONS: CTAF/UNICOM 123.0

CLEARANCE DELIVERY PHONE: For CD ctc Grant County Apch at 509-762-2842, when Apch clsd ctc Seattle ARTCC at 253-351-3694.

MOSES LAKE N47°12.65' W119°19.01' NOTAM FILE MWH. SEATTLE
 (VH) (DH) VORW/DME 115.0 MWH Chan 97 at Grant Co Intl. 1193/18E. H-1C, L-13A

VOR unusable:

025°-040° byd 40 NM
 055°-070° byd 40 NM
 071°-081° byd 40 NM blo 28,000'
 175°-198° byd 40 NM blo 6,000'
 175°-198° byd 67 NM blo 10,000'
 175°-198° byd 70 NM
 200°-210° byd 40 NM
 220°-230° byd 40 NM
 240°-253° byd 40 NM blo 18,000'
 254°-260° byd 40 NM
 315°-345° byd 40 NM

RCO 122.4 (SEATTLE RADIO)

MOUNT CONSTITUTION N48°40.79' W122°50.48' SEATTLE
 RCO 122.3 (SEATTLE RADIO) L-1E

NORMAN GRIER FLD (See KENT on page 245)
