

## LEWISTON

**LEWISTON/NEZ PERCE CO** (LWS)(KLWS) 2 S UTC-8(-7DT) N46°22.47' W117°00.92'

SEATTLE  
H-1C, L-13B  
IAP, AD

1442 B TPA—See Remarks Class I, ARFF Index A NOTAM FILE LWS MON Airport

**RWY 08-26:** H6511X150 (ASPH-GRVD) S-150, D-180, 2S-175,  
2D-400 PCN 56 F/A/X/T HIRL

**RWY 08:** REIL. VASI(V4L)—GA 3.0° TCH 45'. Rgt tfc.

**RWY 26:** MALSR. PAPI(P4L)—GA 3.0° TCH 51'. Tree.

**RWY 12-30:** H5003X75 (ASPH-GRVD) S-118, D-196, 2S-119

PCN 47 F/A/X/T MIRL 1.4% up SE

**RWY 12:** REIL. PAPI(P2L)—GA 3.0° TCH 40'. Rgt tfc.

**RWY 30:** PAPI(P2L)—GA 3.0° TCH 45'. Thld displcd 253'. Antenna.

**RUNWAY DECLARED DISTANCE INFORMATION**

**RWY 08:** TORA-6511 TODA-6511 ASDA-6511 LDA-6511

**RWY 12:** TORA-5003 TODA-5003 ASDA-4750 LDA-4750

**RWY 26:** TORA-6511 TODA-6511 ASDA-6511 LDA-6511

**RWY 30:** TORA-5003 TODA-5003 ASDA-5003 LDA-4750

**SERVICE:** S4 FUEL 100, 100LL, JET A LGT When ATCT clsd ACTVT  
MALSR Rwy 26; REIL Rwy 08; PAPI Rwy 12 and Rwy 30—CTAF.  
Rwy 12 PAPI unusbl byd 3.5 NM.

**AIRPORT REMARKS:** Attended 1330-0500Z†. CLSD to unsked acr opns with  
more than 30 psgr seats excp PPR call amgr 208-790-1050.

Frequent no radio AG acft activity invof arpt. LWS apn E hngr ramp clsd  
to acrs exc GA and acft wingspan less than 58 ft. TPA—Heavy and  
turbine powered acft 3002(1560) all others 2502(1060).

**AIRPORT MANAGER:** 208-748-9132

**WEATHER DATA SOURCES:** ASOS 135.575 (208) 746-4185. LAWRS.

**COMMUNICATIONS:** CTAF 119.4 UNICOM 122.95

RCO 122.3 (BOISE RADIO)

Ⓡ SEATTLE CENTER APP/DEP CON 123.95

TOWER 119.4 (1400-0600Z)† GND CON 121.9

**CLEARANCE DELIVERY PHONE:** For CD if una to ctc on FSS freq, ctc Seattle ARTCC at 253-351-3694.

**AIRSPACE:** CLASS D svc 1400-0600Z†; other times CLASS E.

**RADIO AIDS TO NAVIGATION:** NOTAM FILE LWS.

**NEZ PERCE (L) (L) VOR/DME** 114.45 MQG Chan 91(Y) N46°22.89' W116°52.17' 246.6 1 NM to fld.  
1734/20E. DME unmonitored.

VOR unusable:

060°-120° byd 20 NM blo 12,000'

121°-165° byd 30 NM blo 12,000'

270°-330° byd 30 NM blo 9,000'

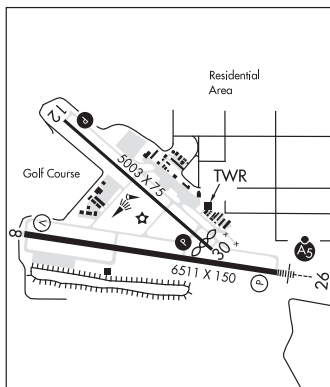
DME unusable:

060°-120° byd 20 NM blo 12,000'

121°-165° byd 30 NM blo 12,000'

270°-330° byd 30 NM blo 9,000'

**ILS** 109.7 I-LWS Rwy 26. Class IE. Unmonitored when ATCT clsd. Autopilot coupled approaches not authorized  
blo 2,500'.



**SNAKE RIVER SPB** (78U) 3 SW UTC-8(-7DT) N46°21.88' W117°03.72'

SEATTLE

735 NOTAM FILE BOI

**WATERWAY N-S:** 3000X150 (WATER)

**WATERWAY S:** P-line.

**SEAPLANE REMARKS:** Attended Apr-Oct 1500Z†-dusk and Nov-Mar irregularly. P-lines cross Snake River north, south above  
and below ldg area. Bridge across Snake River N of ldg area. Lndg area within Lewiston-Nez Perce County arpt tfc area;  
ctc LWS ATCT on Twr/CTAF 119.4. Waterway N-S waterlane length and width varies. Heavy boat tfc in vicinity of spb.

No beaching gear or mooring buoys avbl. Acft may dock at marina if space is avl.

**AIRPORT MANAGER:** 208-799-5015

**COMMUNICATIONS:** CTAF 122.9

**CLEARANCE DELIVERY PHONE:** For CD ctc Seattle ARTCC at 253-351-3694.

**LOWER LOON CREEK** (See CHALLIS on page 45)