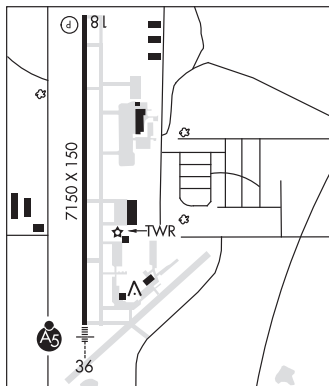


TUPELO RGNL (TUP)(KTUP) P (ARNG) 3 W UTC-6(-5DT) N34°16.14' W88°46.19'**MEMPHIS**
H-6J, L-18G
IAP, DIAP, AD

347 B Class I, ARFF Index A NOTAM FILE TUP

RWY 18-36: H7150X150 (ASPH-GRVD) S-69, D-91, 2D-168

PCN 72 F/C/W/T HIRL

RWY 18: REIL. PAPI(P4R)—GA 3.0° TCH 45'.**RWY 36:** MALS.R.**SERVICE:** S4 **FUEL** 100LL, JET A, A+, A1+ **OX3, 4 LGT** ACTIVATE
MALS.R Rwy 36; REIL Rwy 18; HIRL Rwy 18-36—CTAF. PAPI Rwy
18 opr continuously.**MILITARY—FUEL** A+ (avbl 1200-0400Z‡, C931-492-2160. OT
C931-492-2160, \$50 fee, 30 min PN.) (NC-100LL, A1+)**AIRPORT REMARKS:** Attended 1200-0400Z‡. A+ fuel svc avbl 24 hrs
with credit card. Hel ops all hrs 700 ft AGL E of rwy 18/36—ctc CTAF
for adzy. Acr ramp rstrd to acr ops excp with PPR Call amgr Mon-Fri
1400-2300Z‡; 662-841-6570. PPR for unsked acr ops with more
than 30 pax seats call amgr 662-841-6570. Index B ARFF eqpt
avbl only during sked acr ops.**MILITARY REMARKS: CAUTION** Hel ops all hrs 700 ft AGL E of Rwy
18-36—ctc CTAF for adzy. **ARNG** Support fac opr Mon-Fri
1300-2200Z‡ exc hol. Ltd prk avbl. No tsnt fuel avbl. DSN
293-3438, C662-891-4438.**AIRPORT MANAGER:** 662-841-6570**WEATHER DATA SOURCES:** ASOS 133.525 (662) 840-8528.**COMMUNICATIONS: CTAF** 118.775**TUPELO RCO** 122.5 (GREENWOOD RADIO)Ⓡ **MEMPHIS CENTER APP/DEP CON** 128.5**TOWER** 118.775 (1200-0400Z‡) **GND CON** 121.825**AIRSPACE: CLASS D** svc 1200-0400Z‡; other times CLASS E.**RADIO AIDS TO NAVIGATION:** NOTAM FILE TUP.(L) (L) **VORW/DME** 109.8 OTB Chan 35 N34°13.43' W88°47.84' 023° 3.0 NM to fld. 364/4E.VOR portion unusable:
190°-220°**VERON NDB (LOMW)** 420 TU N34°10.82' W88°46.12' 001° 5.3 NM to fld. 325/2W.**ILS/DME** 108.5 I-TUP Chan 22 Rwy 36. Class IA. LOM VERON NDB. Unmonitored 0500-1100Z‡. LOC front
course unusable beyond 025° right of course autopilot cpd apchs NA blw 1,160' MSL.**TYLERTOWN****PAUL PITTMAN MEML** (T36) 3 NW UTC-6(-5DT) N31°08.74' W90°10.07'**NEW ORLEANS**
L-21B, 22F

384 B NOTAM FILE GWO

RWY 18-36: H3023X60 (ASPH) S-20 MRL 0.9% up N**RWY 18:** PAPI(P2L)—GA 3.0° TCH 40'. Trees.**RWY 36:** PAPI(P2L)—GA 3.0° TCH 41'.**SERVICE: FUEL** 100LL **LGT** PAPIs OTS indefly.**AIRPORT REMARKS:** Unattended. 10LL avbl 24 hrs with credit card. Pilots must provide their own tiedown ropes. Pub fone
601-876-9327.**AIRPORT MANAGER:** 601-814-9021**COMMUNICATIONS: CTAF/UNICOM** 122.8**CLEARANCE DELIVERY PHONE:** For CD ctc Houston ARTCC at 281-230-5622.**RADIO AIDS TO NAVIGATION:** NOTAM FILE MCB.**MC COMB (H) (H) VORTAC** 116.7 MCB Chan 114 N31°18.27' W90°15.49' 151° 10.6 NM to fld. 440/3E.**UNIVERSITY—OXFORD** (See OXFORD on page 166)**VERON** N34°10.82' W88°46.12' NOTAM FILE TUP.**MEMPHIS**
L-18G**NDB (LOMW)** 420 TU 001° 5.3 NM to Tupelo Rgnl. 325/2W.