

ARCHER CITY MUNI (T39) 1 SE UTC-6(-5DT) N33°34.94' W98°37.12'

DALLAS-FT WORTH
L-17B

1065 NOTAM FILE FTW
RWY 17-35: H3200X60 (ASPH-TURF) S-12.5

RWY 17: Road.

SERVICE: S2

AIRPORT REMARKS: Unattended. Wildlife on and invof arpt. Rwy 17-35 CLOSED indefinitely; under repair. Rwy 17-35 loose grvl, tall grass on rwy. Rwy mostly turf.

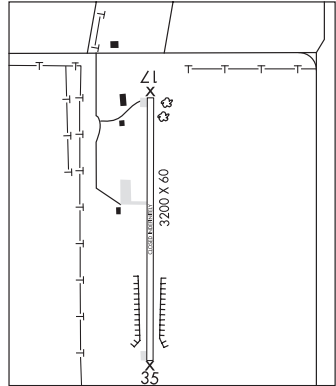
AIRPORT MANAGER: 940-631-4519

COMMUNICATIONS: CTAF 122.9

CLEARANCE DELIVERY PHONE: For CD ctc Fort Worth ARTCC at 817-858-7584.

RADIO AIDS TO NAVIGATION: NOTAM FILE SPS.

WICHITA FALLS (H) (H) VORTACW 112.7 SPS Chan 74 N33°59.24' W98°35.61' 173° 24.3 NM to fld. 1133/10E.



ARESTI AERODROME (See GODLEY on page 323)

ARLEDGE FLD (See STAMFORD on page 429)

ARLINGTON MUNI (GKY)(KGKY) 4 S UTC-6(-5DT) N32°39.83' W97°05.66'

DALLAS-FT WORTH
COPTER
H-6H, L-17C, A
IAP, AD

628 B NOTAM FILE GKY

RWY 16-34: H6080X100 (CONC) S-60 MIRL 0.5% up NW

RWY 16: REIL. PAPI(P4L)—GA 3.0° TCH 42'.

RWY 34: MALSR. PAPI(P4L)—GA 3.0° TCH 55'.

SERVICE: S4 FUEL 100LL, JET A OX 4 LGT MIRL Rwy 16-34 preset med intst; higher intst by ATCT req. When ATCT clsd ACTVT MALSR Rwy 34—CTAF.

AIRPORT REMARKS: Attended continuously. 100LL self serve fuel. Extsv hel tfc west of rwy.

AIRPORT MANAGER: 817-459-5571

WEATHER DATA SOURCES: ASOS 127.375 (817) 557-0251.

COMMUNICATIONS: CTAF 128.625

Ⓡ REGIONAL APP/DEP CON 118.1 124.3 125.2 125.8 135.975 (North)
125.8 135.975 (South) 118.1 125.8

TOWER 128.625 (1300-0300Z±) **GND CON/CLNC DEL** 121.875

CLNC DEL 118.85 (RGNL APP CON when twr clsd)

AIRSPACE: CLASS D svc 1300-0300Z±; other times CLASS G.

RADIO AIDS TO NAVIGATION: NOTAM FILE FTW.

MAVERICK (VH) (H) VORW/DME 113.1 TTT Chan 78 N32°52.15' W97°02.43' 186° 12.6 NM to fld. 536/6E.

All acft arriving DFW are requested to turn DME off until departure due to traffic overload of Maverick DME

DME unusable:

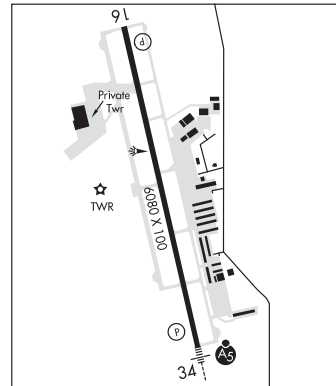
180°-190° byd 10 NM

240°-260° byd 20 NM blo 3,500'

VOR unusable:

105°-110° byd 40 NM

ILS/DME 111.55 I-GKY Chan 52(Y) Rwy 34. Class IE. LOC unusable byd 15° right of course. Unmonitored when ATCT clsd.



ARVILLA N33°03.98' W96°03.68' NOTAM FILE GVT.

DALLAS-FT WORTH
L-17D

(T) **TACAN** 109.6 MJF Chan 33 at Majors. 543/5E.

DME unusable:

024°-034° byd 16 NM blo 3,000'

080°-095° byd 5 NM

TACAN AZIMUTH unusable:

024°-034° byd 16 NM blo 3,000'

080°-095° byd 5 NM

212°-222° byd 12 NM blo 3,500'