

**GRAFORD**

**POSSUM KINGDOM** (F35) 12 SW UTC-6(-5DT) N32°55.40' W98°26.21'

**DALLAS-FT WORTH**

1008 B NOTAM FILE FTW

L-17B

**RWY 02-20:** H3500X60 (ASPH) S-24 MIRL

IAP

**RWY 02:** PAPI(P2L)—GA 3.5° TCH 33'. Trees.

**RWY 20:** PAPI(P2L)—GA 3.5° TCH 30'. Trees.

**SERVICE:** LGT ACTVT MIRL Rwy 02-20—CTAF.

**AIRPORT REMARKS:** Unattended. Wildlife invof arpt. NOTE: See Special

Notices—Aerobatic Practice Area.

**AIRPORT MANAGER:** 940-779-2321

**COMMUNICATIONS:** CTAF 122.9

® **FORT WORTH CENTER APP/DEP CON** 127.0

**CLEARANCE DELIVERY PHONE:** For CD ctc Fort Worth ARTCC at 817-858-7584.

**RADIO AIDS TO NAVIGATION:** NOTAM FILE FTW.

**MILLSAP (VH) (H) VORTACW** 117.7 MQP Chan 124 N32°43.57' W97°59.85' 289° 25.2 NM to fld. 900/9E.

VOR unusable:

004°-009° byd 40 NM

010°-054° byd 40 NM blo 3,800'

010°-054° byd 46 NM blo 5,000'

010°-054° byd 56 NM

055°-066° byd 40 NM blo 3,800'

055°-066° byd 50 NM

230°-247° byd 40 NM

248°-258° byd 40 NM blo 3,700'

248°-258° byd 53 NM

259°-270° byd 40 NM blo 6,000'

259°-270° byd 63 NM

271°-285° byd 40 NM

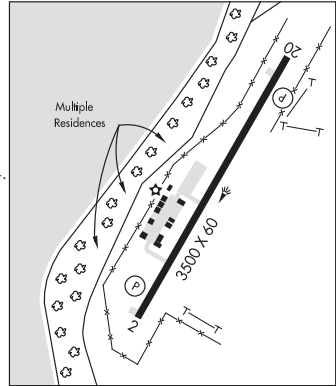
312°-316° byd 40 NM

325°-340° byd 40 NM blo 3,000'

325°-340° byd 46 NM blo 5,000'

325°-340° byd 66 NM

353°-003° byd 40 NM blo 18,000'



**GRAHAM MUNI** (RPH)(KRPH) 2 E UTC-6(-5DT) N33°06.64' W98°33.29'

**DALLAS-FT WORTH**

1123 B NOTAM FILE RPH

H-6H, L-17B

**RWY 03-21:** H5000X75 (ASPH) S-12 MIRL

IAP

**RWY 03:** PAPI(P2L)—GA 3.0° TCH 40'. Trees.

**RWY 21:** PAPI(P2R)—GA 3.0° TCH 40'. Trees.

**RWY 18-36:** H3317X50 (ASPH) S-8 0.4% up S

**RWY 18:** Thld dspcld 639'. Road.

**RWY 36:** Road.

**SERVICE:** S4 FUEL 100LL, JET A, A+ LGT MIRL Rwy 03-21 SS-SR preset to low, to incr instst ACTVT—CTAF.

**AIRPORT REMARKS:** Attended Mon-Fri 1400-2300Z. Wildlife on and invof arpt. Call prior to arrival for hangar availability at 940-549-6150.

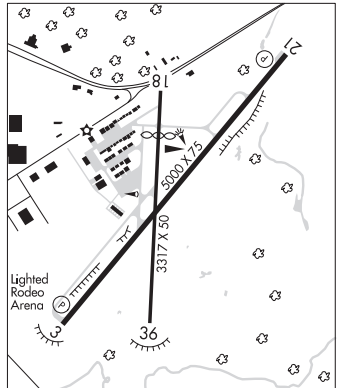
**AIRPORT MANAGER:** 940-549-6150

**WEATHER DATA SOURCES:** AWOS-3P 118.025 (940) 521-0685.

**COMMUNICATIONS:** CTAF/UNICOM 122.975

® **FORT WORTH CENTER APP/DEP CON** 127.0

**CONTINUED ON NEXT PAGE**



CONTINUED FROM PRECEDING PAGE

**CLEARANCE DELIVERY PHONE:** For CD ctc Fort Worth ARTCC at 817-858-7584.

**RADIO AIDS TO NAVIGATION:** NOTAM FILE FTW.

**MILLSAP (VH) (H) VORTACW** 117.7 MQP Chan 124 N32°43.57' W97°59.85' 300° 36.4 NM to fld. 900/9E.

VOR unusable:

- 004°-009° byd 40 NM
- 010°-054° byd 40 NM blo 3,800'
- 010°-054° byd 46 NM blo 5,000'
- 010°-054° byd 56 NM
- 055°-066° byd 40 NM blo 3,800'
- 055°-066° byd 50 NM
- 230°-247° byd 40 NM
- 248°-258° byd 40 NM blo 3,700'
- 248°-258° byd 53 NM
- 259°-270° byd 40 NM blo 6,000'
- 259°-270° byd 63 NM
- 271°-285° byd 40 NM
- 312°-316° byd 40 NM
- 325°-340° byd 40 NM blo 3,000'
- 325°-340° byd 46 NM blo 5,000'
- 325°-340° byd 66 NM
- 353°-003° byd 40 NM blo 18,000'

**GRANBURY RGNL** (GDJ)(KGDJ) 2 W UTC-6(-5DT) N32°26.58' W97°49.28'

**DALLAS-FORT WORTH**  
L-17C, A  
IAP

835 B NOTAM FILE GDJ

**RWY 01-19:** H5201X75 (CONC) MIRL 1.0% up S

**RWY 01:** PAPI(P2L)—GA 3.0° TCH 40'.

**RWY 19:** PAPI(P2L)—GA 3.0° TCH 40'. Rgt tfc.

**SERVICE:** S4 FUEL 100LL, JET A LGT MIRL Rwy 01-19 preset low intst; to incr intst ACTVT—CTAF.

**AIRPORT REMARKS:** Attended 1300-0100Z±. 100LL 24 hr self serve. For Jet A aft hrs call 817-579-8533 durg ofc hrs. Overnight tie-down fee waived with fuel purchase.

**AIRPORT MANAGER:** 817-579-8533

**WEATHER DATA SOURCES:** AWOS-3T 118.925 (817) 573-7514.

**COMMUNICATIONS:** CTAF/UNICOM 123.0

® FORT WORTH CENTER APP/DEP CON 127.15

**CLEARANCE DELIVERY PHONE:** For CD ctc Fort Worth ARTCC at 817-858-7584.

**RADIO AIDS TO NAVIGATION:** NOTAM FILE FTW.

**GLEN ROSE (L) TACAN** Chan 97 JEN (115.0) N32°09.58' W97°52.66' 004° 17.2 NM to fld. 1300/6E.

